



Gordon College

2008-2009

FACT BOOK

Table of Contents

General Information.....	4
The Mission of Gordon College	5
University System of Georgia.....	6
Gordon College Historical Highlights	8
Accreditation.....	11
Five Year Strategic Plan	12
Gordon College Administration.....	13
Gordon College Organization Chart	15
Gordon College Foundation.....	16
Gordon College Publications	17
Gordon Students	19
Facts at a Glance	20
Enrollment	21
Ten Year Enrollment	21
Fall and Spring Semesters 2003-2008.....	22
Enrollment Full-Time and Part-Time Students	23
Enrollment by Age and Gender	24
Enrollment by Gender	25
Enrollment by Ethnicity.....	25
Enrollment by Ethnicity and Gender	26
Enrollment by Credit Hours	27
Enrollment by Classification	28
Enrollment by County of Residence.....	29
Enrollment by Georgia County of Residence - MAP.....	30
Learning Support Enrollment	31
Enrollment by Declared Majors	32
Enrollment by Division Fall 2007 & Fall 2008.....	34
One Year Retention	35
First-Time Full-Time Freshmen Retention.....	35
First-Time Full-Time Freshmen Retention by Ethnicity	36
First-Time Full-Time Freshmen Retention by Gender	37
Students Living on Campus.....	38
Students Living on Campus by Ethnicity and Gender.....	38
Students Living on Campus by Classification and Gender	39
Freshmen.....	40
First-Time Freshmen	40
First-Time Full-Time Freshmen	41
First-Time Full-Time Freshmen Graduating High Schools.....	42
First-time Full-Time Freshmen Living on Campus by Gender & Ethnicity	47
First-Time Full-Time Freshmen by County of Residence.....	48
Learning Support Students.....	49
Learning Support Students Enrolled by Ethnicity and Gender	49
Learning Support Course Enrollment.....	50
Learning Support Enrollment by Course.....	51
Learning Support Students by County of Residence	53
Learning Support Students Living on Campus by Gender and Ethnicity.....	54

Learning Support First-Time Freshmen	55
Learning Support First-Time Freshmen Enrolled Fall 2008	55
Learning Support First-Time Freshmen Learning Support Course Enrollment	56
Learning Support First-Time Freshmen Enrollment by LS Course	57
Learning Support First-Time Freshmen by County of Residence	59
Learning Support First-Time Freshmen Living on Campus by Gender & Ethnicity	60
Academics	61
Academic Divisions with Degrees Offered	62
Degrees Conferred	63
Degrees Conferred by Division and Degree Program Fiscal Year 2008-2009	64
2008-2009 Graduates' Demographics	66
Graduates' Demographics by Division	67
Faculty and Staff	69
Faculty and Staff Fall 2008	70
Faculty Fall 2008	71
Full-Time Faculty Fall 2004 – Fall 2008	72
Full-Time Faculty by Gender and Rank	73
Full-Time Faculty by Discipline and Academic Rank	74
Full-Time Employees	75
Occupational Class & Ethnicity of Full-Time Employees	76
Gordon College Faculty Fall 2008	77
Financial Information	84
Educational and General Revenues	85
Educational and General Expenditures	86
Auxiliary Enterprises Net Revenue	87
Facilities	88
Space Usage by Building	89
Dorothy W. Hightower Library	92
Fine Arts Facilities	94
Athletic and Recreational Facilities	96



General Information





The Mission of Gordon College

Gordon College joined the University System of Georgia in 1972 as an associate level institution with a distinctive legacy of excellence in scholarship and service. From its founding in 1852, Gordon has grown and changed, not only in response to, but also in anticipation of, the educational needs of its community. Gordon's scope of influence now extends beyond the surrounding areas to include the rapidly growing suburban areas south of Atlanta, east of Columbus, and north of Macon. A community in flux, this area of Georgia is rich in diversity and reflects extremes in economic and population growth which demand a mission that includes focused two-year professional offerings, the traditional pre-baccalaureate curricula, and baccalaureate offerings targeting needs of the area. Gordon College fully serves the community by providing educational and cultural opportunities both within and beyond this area. The mission of Gordon College, therefore, is to:

1. Prepare students for transfer into and success in baccalaureate and professional degree programs through the college transfer program;
2. Prepare students for entry into and success in specific occupations and careers especially demanded by the surrounding community through appropriate associate and baccalaureate programs;
3. Strengthen the academic skills of students otherwise unprepared for entry-level college work through the learning support program; and
4. Serve the community by providing opportunities for life-long learning and professional development through community service programs.

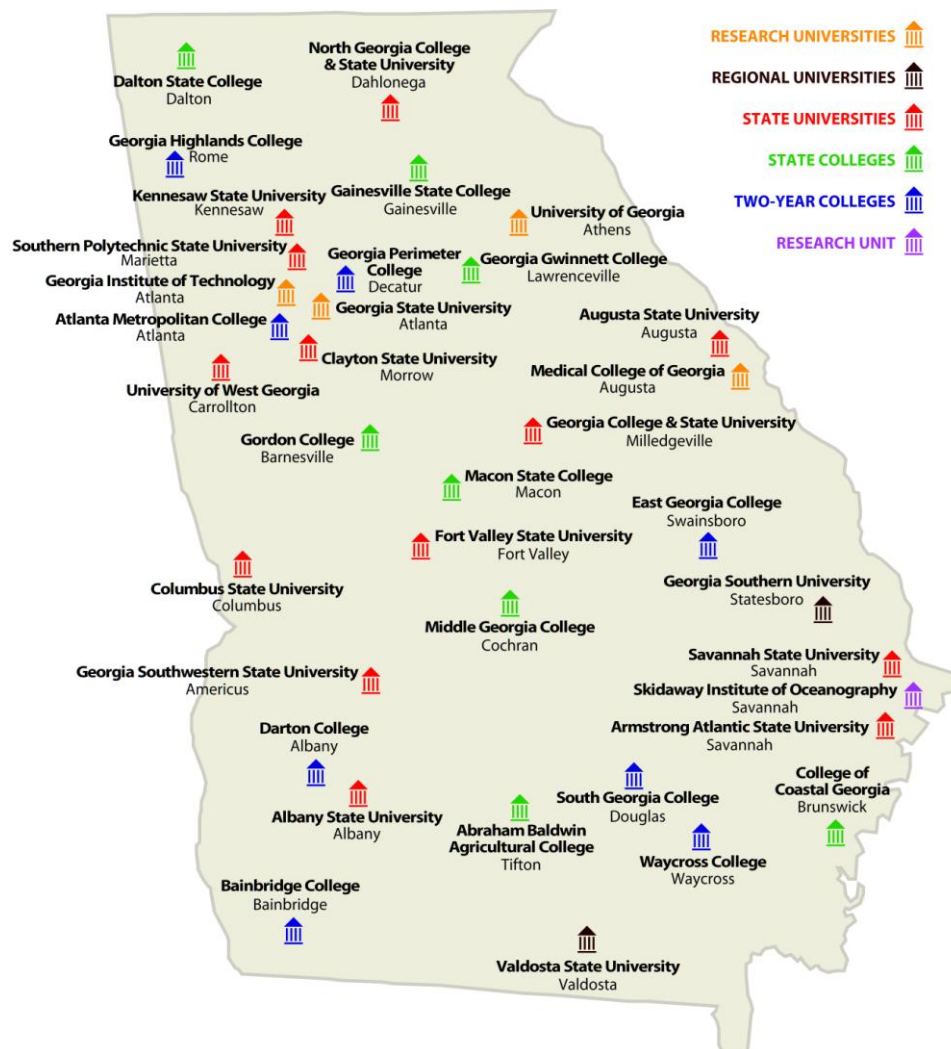
Gordon College is dedicated to providing a superior climate of learning through excellence in instruction, attention to students' needs, and cooperation with other agencies to enhance Gordon's own resources. The College further commits itself to assembling a faculty with excellent credentials that is dedicated to teaching, service and active in the pursuit of scholarship.



University System of Georgia

Gordon College is part of the University System of Georgia, administered by a Board of Regents, created in 1931 to unify public higher education in Georgia for the first time under a single governing and management authority. The governor appoints members to the Board, who each serve seven years. Today the Board of Regents is composed of 18 members, five of whom are appointed from the state-at-large, and one from each of the 13 congressional districts. The Board elects a chancellor who serves as its chief executive officer and the chief administrative officer of the University System.

The Board oversees 35 colleges and universities: four research universities, two regional universities, 13 state universities, eight state colleges, and eight two-year colleges. In fall 2008, these institutions enrolled approximately 283,000 students and employed over 40,000 faculty and staff to provide teaching and related services to students and the communities in which they are located.



Source: University System of Georgia website: www.usg.edu/regents/ last modified January 15, 2009.



Members of the Board of Regents

Erroll B. Davis, Jr. - *Chancellor*

Regent	Term	District
Robert F. Hatcher – Chair	2006 – 2013	At-Large
Willis J. Potts, Jr. – Vice Chair	2006 – 2013	Eleventh
Felton Jenkins	2006 – 2013	At-Large
Hugh A. Carter, Jr.	2000 – 2009	At-Large
William H. Cleveland	2001 – 2009	At-Large
Donald M. Leebern, Jr.	2005 – 2012	At-Large
James A. Bishop	2007 – 2011	First
Doreen Stiles Poitevint	2004 – 2011	Second
Allan Vigil	2003 – 2010	Third
Wanda Yancey Rodwell	2005 – 2012	Fourth
Elridge McMillan	2003 – 2010	Fifth
Kessel Stelling, Jr.	2008 – 2015	Sixth
Richard L. Tucker	2005 – 2012	Seventh
W. Mansfield Jennings, Jr.	2006 – 2013	Eighth
James R. Jolly	2008 – 2015	Ninth
William NeSmith, Jr.	2008 – 2015	Tenth
Benjamin J. Tarbutton, III	2006 – 2013	Twelfth
Kenneth R. Bernard, Jr.	2007 – 2014	Thirteenth

Source: University System of Georgia Board of Regents' website www.usg.edu/regents/members (last updated July 17, 2009).



Gordon College Historical Highlights

- 1852** Legislature chartered Barnesville Male and Female High School.
- 1872** The citizens of Barnesville established Gordon Institute under the Charter of 1852 as a preparatory school and primary school with Charles A. Lambdin and Azmon A. Murphey as organizers and associate principals. The Institute opened with 16 pupils.
- 1874** Alice Wooten became the first graduate of Gordon Institute.
Enrollment exceeded 150 students.
- 1878** Charles E. Lambdin became the first president of Gordon Institute.
Enrollment numbered 200.
- 1880** The first Gordon library formally opened.
- 1890** The Military Department was established.
- 1908** Lambdin Hall was built.
- 1918** Over 650 Gordon graduates served in World War I. Gordon had 260 commissioned officers serving, the second highest number for any preparatory school in the country and the highest percentage. Eighteen Gordon graduates and faculty were killed in action.
- 1928** Gordon Institute advanced its curriculum to the rank of Junior College.
- 1933** Gordon Military High School and Junior College moved to the site of the former Georgia Industrial College, a 350-acre campus already containing administrative offices, classrooms, and lab equipment.
- 1941** Gordon Junior College was admitted to the Southern Association of Colleges and Schools.
- 1966** To facilitate transfer the college began conferring Associate of Arts Degrees.
- 1972** Gordon Military College joined the University System of Georgia as Gordon Junior College, with Dr. Jerry Williamson as President.
- 1973** A nursing program to prepare students for the R.N. licensure exam was started.
- 1975** Enrollment topped 1,000 for the first time in the history of the college.
- 1978** The Dorothy W. Hightower Library opened.
- 1987** Gordon Junior College became Gordon College.
The endowment topped \$1 million.



Gordon College Historical Highlights

- 1989** An Economic Study estimated the immediate impact of the college on the seven county areas to exceed \$20 million.
- 1990** A faculty and staff committee developed a new mission statement for the college, approved by the faculty April 9, 1990.
- 1993** The Gordon College Foundation committed to pay for the first year of a baccalaureate nursing program, and the College began to move toward a divisional structure in preparation for four-year status.
Enrollment topped 2,000 for the first time, as Gordon became the fastest growing institution in the University System of Georgia.
- 1994** Governor Zell Miller broke ground for the new dormitory building and construction began.
- 1995** The Gordon College Foundation Endowment topped \$2 million.
- 1998** The pedestrian underground passage and amphitheater were completed.
- 1999** The new technology complex was approved.
- 2000** Atrium area was added to the student center.
- 2001** Dr. Sherman R. Day served as interim president.
The faculty senate and staff council were established.
Enrollment topped 3,000.
- 2002** Dr. Lawrence Weill was inaugurated as the second president of Gordon College under the University System of Georgia.
The Instructional Complex was completed, adding 100,000 square feet of state-of-the-art classrooms, laboratories, and faculty offices.
Offices of Community Education and Institutional Advancement were established.
- 2003** Instructional Complex opened for use.
Enrollment increased nearly 10 percent for a fall 2003 total of 3,415.
Gordon College was awarded an Intellectual Capital Partnership Program (ICAPP) Grant of \$346,000 to support LPN to RN bridge program and a grant for students working in related health care fields to return to school.
Gordon College was awarded a \$30,000 Strengthening Institutions Planning Grant under Title III of the Higher Education Act.
Hightower Library received an estimated 20,000 volumes of books and dozens of boxes of microfilm from the former Tift College in Forsyth.



Gordon College Historical Highlights

- 2004** Gordon's nursing program marks its 30th anniversary.
Russell Hall renovation was completed, including modernization of classroom facilities and faculty offices and addition of a conference room.
Construction set to begin on a new student residence complex, to add 459 new beds, completed in August 2005.
- 2005** The Board of Regents granted Gordon College permission to apply for three baccalaureate degree programs.
Gordon College Commons A, B & C were opened for student residents.
Enrollment increased 1.5 percent for fall 2005 with a record total of 3,505.
- 2006** The Board of Regents granted Gordon College's petition for a baccalaureate degree in early childhood education.
Phase II of the apartment complex building project began fall 2006.
- 2007** Gordon College Foundation received more than \$1.5 million in donations in 2007 making it the best fundraising year in the Foundation's 36-year history.
Gordon College received a \$188,137 nursing grant to add a second class of students to its associate of science in nursing program and to expand the program's simulation lab.
Four construction projects began:
- 17,000 square foot expansion of the Gordon College Student Center.
 - Gordon College's largest student residence to date, Gordon Village.
 - New visitor parking lot located behind the Community Education and Welcome Center offices.
 - Alumni House renovations.
- 2008** Gordon Village residence hall opened in fall 2008 increasing on campus housing to 1,036.
Gordon College Emergency Notification System (GCENS) implemented during fall 2008.
Demolition began on Watson Hall in December 2008 to make room for a new state-of-the-art nursing and allied health building.
Enrollment increased 4.1 percent for fall 2008 with a record total of 3,855.
- 2009** The newly expanded Student Success Center and bookstore opened spring 2009.
Gordon College's first baccalaureate degrees were awarded to 28 students in Early Childhood Education.



Accreditation

Gordon College is accredited by the Commission on Colleges of the Southern Association of Colleges and Schools (1866 Southern Lane, Decatur, Georgia 30033-4097; Telephone number 404-679-4501) to award the associate degrees and the Bachelor of Science in Education. The College has been approved for federal and state financial aid programs.

The nursing program is accredited by the National League for Nursing Accrediting Commission and approved by the Georgia Board of Nursing.

The Bachelor of Science in Early Childhood Education program meets all Developmental Approval Review Standards of the Georgia Professional Standards Commission and National Council for Accreditation of Teacher Education.



Five Year Strategic Plan

During the 2008-2009 academic year, Gordon College's faculty, staff, and administration collaborated to develop a strategic plan for the five year period from 2009 to 2013. Led by the president and the Faculty Senate Planning Committee, the college community developed a plan which incorporated the following strategic priorities:

Strategic Priority One: Curriculum

Gordon College will expand the curriculum to improve access and meet workforce needs.

Strategic Priority Two: Facilitate Important Student Transitions

Gordon College will develop programs that will increase student success in the crucial transitions: from learning support courses to college level courses, from college level to successful transfer; from college level courses to our majors, from our majors to the workforce.

Strategic Priority Three: Recruitment

Focus recruitment process to support capacity expectations and curriculum growth.

Strategic Priority Four: Gordon College Foundation

Gordon College will engage the Gordon College Foundation as an active partner in securing funds for the College.

Strategic Priority Five: External Relations

Gordon College will promote economic development through partnerships with local, state, and regional entities.

Strategic Priority Six: Professional Community Service

Gordon College will enhance a culture of professional community service.

Strategic Priority Seven: Efficiency, Accountability, Sustainability

Increase efficiency, accountability, and sustainability.



Gordon College Administration

Name	Area
President	
Dr. Lawrence Weill	President
Dr. Dennis Chamberlain	Vice-President for Student Affairs
Rhonda Toon	Vice-President of Institutional Advancement
Jerry Turner	Vice-President for Finance and Administration
Dr. Ed Wheeler	Vice-President for Academic Affairs and Dean of Faculty
Office of Academic Affairs	
Dr. Ed Wheeler	Vice-President for Academic Affairs and Dean of Faculty
Nancy Anderson	Director of the Library
Dr. Richard Baskin	Chair, Division of Humanities
Dr. Alan Burstein	Chair, Division of Business & Social Science
Mrs. Joan Cranford	Chair, Division of Nursing and Health Sciences
Peter J. Higgins	Director of Student Success
Dr. DeWitt Moore	Chair, Division of Mathematics and Natural Sciences
Dr. Jerry Stinchcomb	Chair, Division of Teacher Education
Office of Finance and Administration	
Jerry Turner	Vice-President for Finance and Administration
Leigh Anderson	Director of Business Services
Shawn Douglas	Director of Public Safety
Lee Fruitticher	Associate Vice-President for Finance and Administration
Jeff Hayes	Director of Computer Services
Janet A. Pharo	Comptroller
Richard Vereen	Director of Facilities
Peggy Warren	Director of Human Resources
Office of Institutional Advancement	
Rhonda Toon	Vice-President of Institutional Advancement
Tamara Boatright	Public Information Specialist
Patti Lowery	Program Coordinator, Community Education
Kelly McMurray	Director of Institutional Research
Lynn Yates	Program Coordinator, Alumni Relations
Lana Wingerson	Development Specialist, Foundation Relations



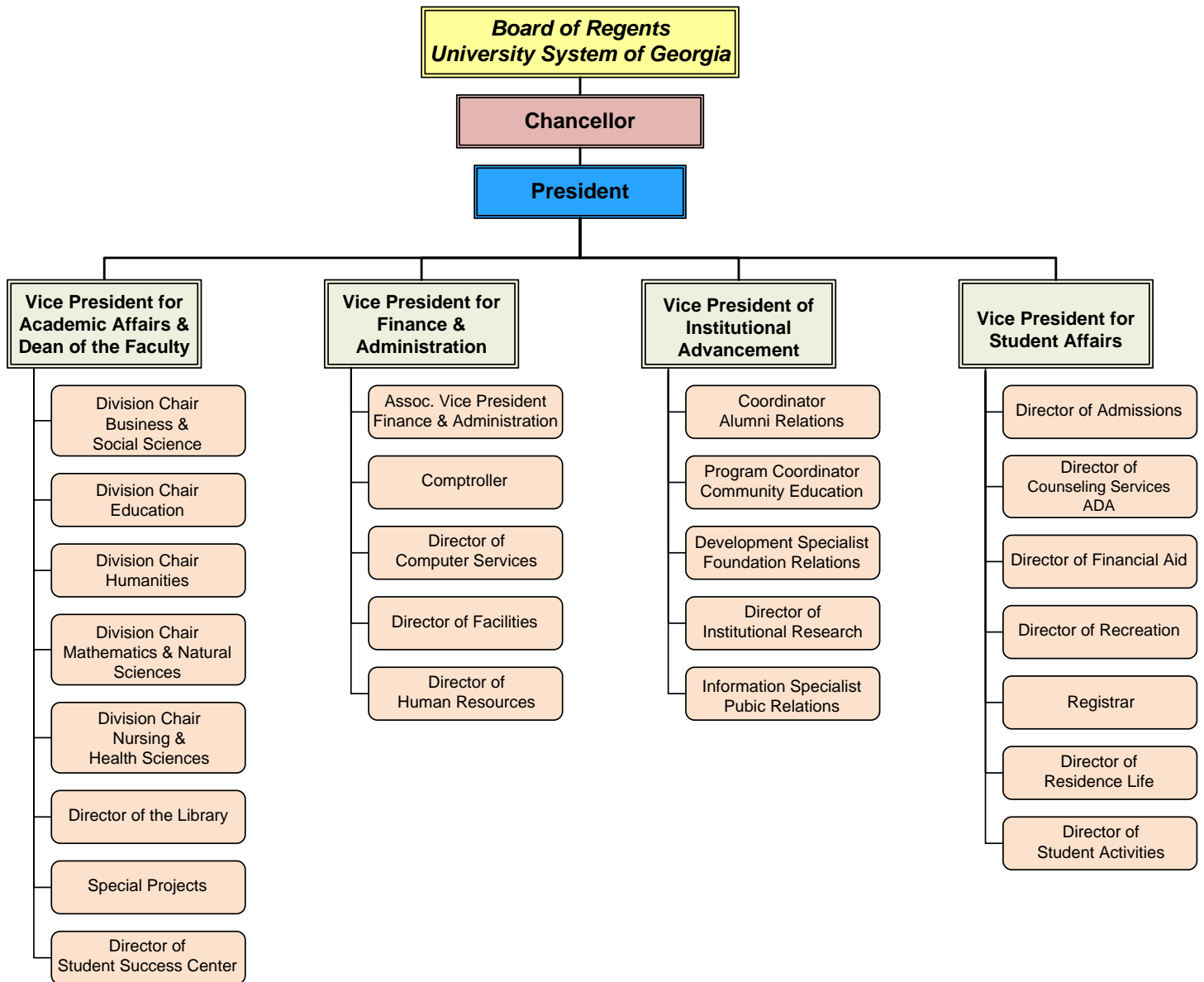
Gordon College Administration

Office of Student Affairs

Dr. Dennis Chamberlain	Vice-President for Student Affairs
Janet Barras	Registrar
Nathan Bell	Interim Director of Admissions
Tonya Coleman	Director of Residence Life
Todd Davis	Athletic Director – Athletics/Campus Recreation
Kristina Henderson	Director of Counseling/ADA
Sharon Lloyd	Director Student Activities
Larry Mitcham	Director of Financial Aid



Gordon College Organization Chart



Revised July 2009



Gordon College Foundation

Founded in 1973, the Gordon College Foundation was established to aid and assist Gordon College in its development as a leading educational institution. The Foundation is composed of outstanding leaders of business, industry, government and the professions from throughout the service area of the college.

Trustees	Trustees Emeriti
Mr. Bruce Akins	Capt. Clifford P. Barnes
Mr. Peter L. Banks	Mrs. Rosemary K. Evans
Ms. Lucinda Dallas Bentley	Mr. Ron Greer
Mr. Daniel W. Brinks	Mr. Sidney E. Jennette, Jr.
Mr. Andy B. Bush	Mr. C.A. Knowles
Mr. George W. Butler, Treasurer	Mr. Jerry Savage
Mrs. Kristi Cain	Dr. Mary Jean Simmons
Mr. Dan T. Cathy	Mr. Larry Smith
Mr. Kenneth E. Coggins	Mr. Richard W. Watkins, Jr.
Mr. Alan W. Connell	Mr. J. Henry Wisebram
Mr. R. Dallis Copeland	
Mr. Otha Dent	
Mr. Robert Dickey	
Mr. James J. Edwards, Jr.	
Mr. J. Joseph Edwards	
Mr. J. William Edwards	
Mr. Walter Geiger	
Mr. James L. Granum	
Mr. Luis Guinot	
Mr. George H. Hightower, Jr., Vice President	
Mr. Calvin S. Hopkins, III	
Rep. Curtis S. Jenkins	
Mr. William K. Malone	
Mr. James R. Matthews, Jr.	
Mr. Quimby Melton, Jr.	
Mr. Ed Mitchell	
Dr. W. Michael Oxford	
Mr. John Quinn	
Mr. Tom T. Richardson	
Mr. Jesse E. Rogers, Jr.	
Mr. Charles M. "Sonny" Story	
Mr. Douglas J. Tuttle	
Mr. J. Henry Walker, III, President	
Dr. Lawrence V. Weill, Secretary	
Mr. Derek B. Williams	
Rep. John P. Yates	

Source: 2008 -2009 Academic Catalog



Gordon College Publications

Gordon College has several publications that are issued during the year to better serve and inform students, faculty, staff, and the community about the purpose of and events at Gordon College. The following publications are available in printed format and/or are posted on the Gordon College website:

Community Education Catalog – published every semester by Community Education listing course offerings, dates, times and cost, and it is posted online at <http://www.gdn.edu/commed/catalog.asp>. It also lists payment and refund information.

The Driftwood – an annual publication sponsored by the Literary Club and the Humanities Division. It is staffed by members of the Literary Club. Students, faculty, and staff may submit original material for inclusion.

Gordon College Academic Catalog – updated and published each academic year. Contains such information as general policies, admissions requirements, financial aid information, fees and expenses, degree programs and transfer information, and other academic information. (www.gdn.edu/admissions/catalog/index.asp).

Gordon College Fact Book – an annual publication containing information, statistical data and projections for Gordon College, and it is published by the Institutional Research office. The Fact Book is also available online at www.gdn.edu/departments/iresearch/.

Gordon College Press – the monthly student newspaper which reports on Gordon news and activities. It is published by student editors and staff and funded by student activity fees.

Gordon College Web site – www.gdn.edu.

Guide to Residence Hall Living – published by Residence Life. Contains information, rules and policies concerning living in Gordon College Residence Halls. (www.gdn.edu/forms/housing/hallguide.pdf).

The Highlander – a monthly newsletter reporting happenings on campus related to faculty, staff, students, and events. Published by the Public Information Office. (www.gdn.edu/departments/resources/highlander.asp).

President's Report – published annually by the Office of Institutional Advancement. Award winning inaugural issue. Written to inform interested parties of progress and advancement at Gordon College, also contains photos and interviews with prominent alumni. (www.gdn.edu/alumni/presidentsreport.asp).

Schedule of Classes – a collaborative publication between Academic Affairs and the other administrative offices. It contains list of course offerings/schedule per semester, deadline dates, fees, registration, drop/add and withdrawal information and more. (<http://www.gdn.edu/schedule/index.asp>).



Gordon College Publications

Traffic Code – is published by Public Safety and lists policies, registration procedures, fines and appeals, and other regulations concerning traffic and parking on campus property.

(www.gdn.edu/departments/publicsafety/trafficcodes.asp).

View Book & Recruitment Package – published by the Admissions Office containing information about Gordon College, applications for admission, Foundation scholarships, list of buildings, campus map, fee schedule, and instructions for filing for financial aid.



Gordon Students





Facts at a Glance Fall 2008

Total Enrollment = 3,855

Enrollment

	Number of Students	% of Total
Full-time	2,642	68.5%
Part-time	1,213	31.5%
Total	3,855	100.0%

Gender

	Number of Students	% of Total
Female	2,525	65.5%
Male	1,330	34.5%
Total	3,855	100.0%

Age

	Number of Students	% of Total
Under 18	140	3.6%
18	977	25.3%
19-23	1,932	50.1%
24-40	654	17.0%
Over 40	152	3.9%
Total	3,855	100.0%

Ethnicity

	Number of Students	% of Total
Am. Indian/Alaskan Native	7	0.2%
Asian/Pacific Islander	62	1.6%
Black, Non-Hispanic	1,392	36.1%
Hispanic	80	2.1%
Multiracial	62	1.6%
Unreported/Unknown	26	0.7%
White, Non-Hispanic	2,226	57.7%
Total	3,855	100.0%

Note. Students' age on the first day of the fall semester 8/18/2008.

Classification

	Number of Students	% of Total
Freshman	2,515	65.2%
Sophomore	1,259	32.7%
Junior	52	1.3%
Senior	29	0.8%
Total	3,855	100.0%

Residence of Students

	Number of Students	% of Total
Atlanta Metropolitan	3,184	82.6%
Other Georgia	649	16.8%
Out of State	18	0.5%
International	4	0.1%
Total	3,855	100.0%

Note. Atlanta Metropolitan area consists of 28 counties.

Student Housing

	Number of Students	% of Total
Living on campus	1,002	26.0%
Commuting to campus	2,853	74.0%
Total	3,855	100.0%

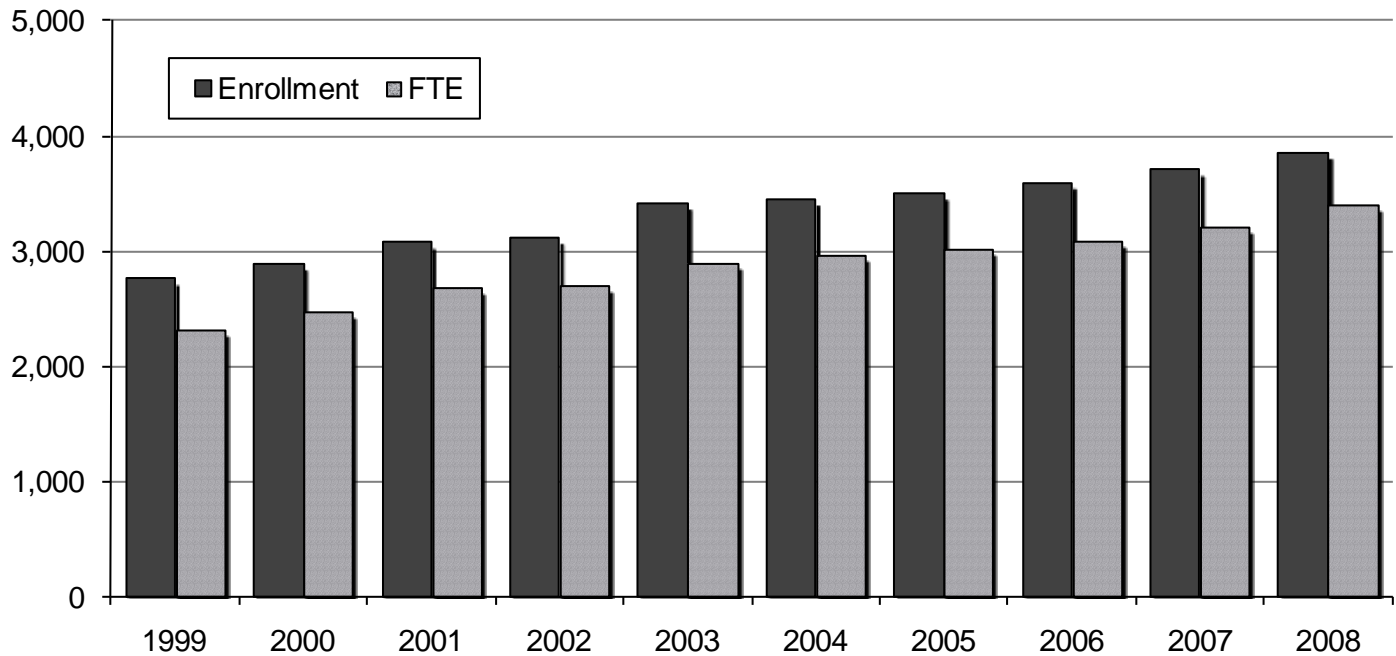
Learning Support

	Number of Students	% of Total
Enrolled in One LS course	530	58.5%
Enrolled in Two LS courses	226	24.9%
Enrolled in Three LS courses	150	16.6%
Total	906	100.0%

Note. Student housing includes only active students who live on campus.



Ten Year Enrollments



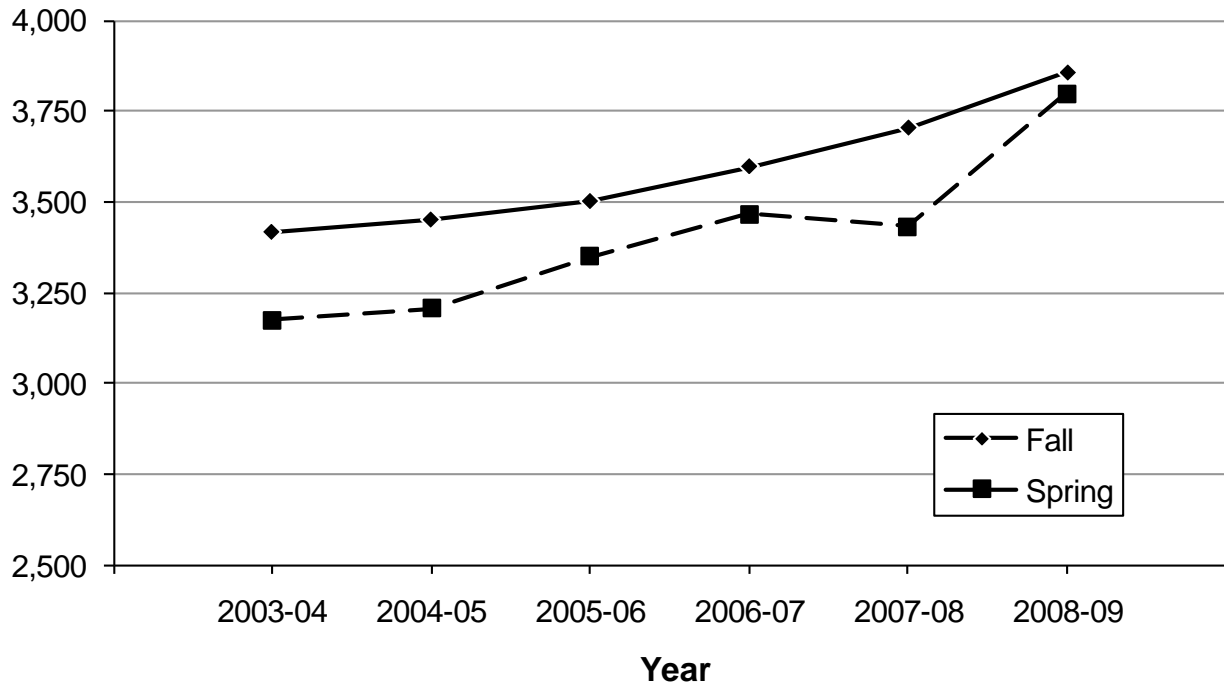
Fall Semesters

	1999	2000	2001	2002	2003	2004	2005	2006	2007	2008
Enrollment	2,758	2,890	3,074	3,116	3,415	3,449	3,500	3,596	3,703	3,855
% Change	11.4%	4.8%	6.4%	1.4%	9.6%	1.0%	1.5%	2.7%	3.0%	4.1%
FTE	2,319	2,469	2,683	2,703	2,898	2,959	3,014	3,091	3,212	3,399
% Change	10.7%	6.5%	8.7%	0.7%	7.2%	2.1%	1.9%	2.6%	3.9%	5.8%

Enrollment is an unduplicated count of all students enrolled in credit courses regardless of course load. Enrollment includes full-time and part-time students. Full-time students are defined as students enrolled for 12 credit hours or more during a semester. Part-time students are defined as students enrolled for less than 12 credit hours during a semester. Beginning with summer 2003, the University System of Georgia changed the definition of Full-Time Equivalent (FTE) enrollment to count each full-time student enrolled for 12 hours or more: count all part-time students' hours enrolled and divide by 12; add the two numbers together.



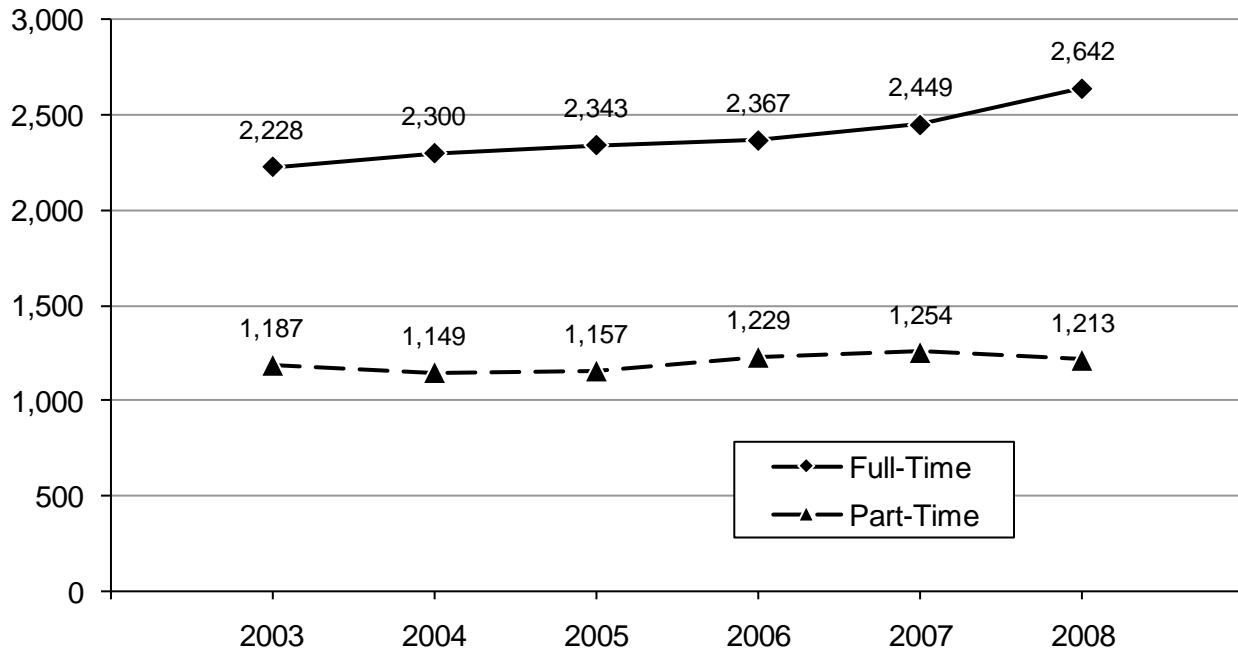
Enrollment Fall and Spring Semesters 2003 – 2008



	Fall Semesters		Spring Semesters	
	Enrollment	% Change Fall to Fall	Enrollment	% Change Spring to Spring
2003-2004	3,415	9.6%	3,173	9.4%
2004-2005	3,449	1.0%	3,206	1.0%
2005-2006	3,500	1.5%	3,350	4.5%
2006-2007	3,596	2.7%	3,466	3.5%
2007-2008	3,703	3.0%	3,431	-1.0%
2008-2009	3,855	4.1%	3,798	10.7%



Enrollment Full-Time and Part-Time Students

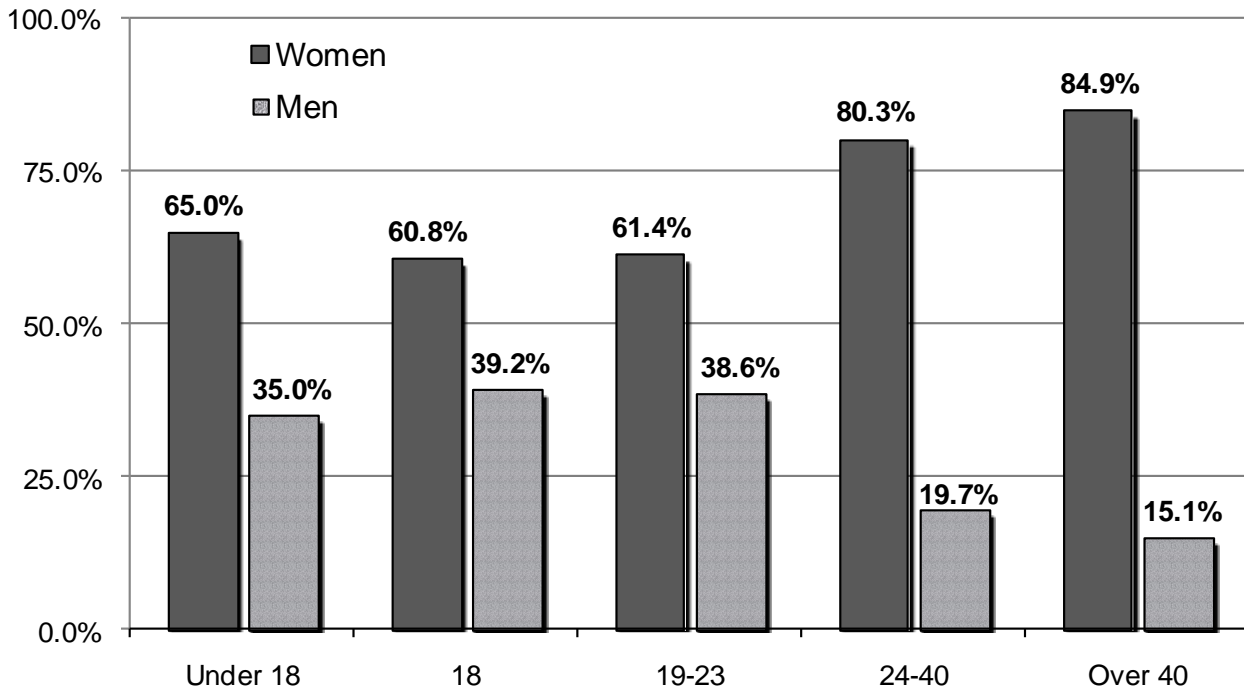


Fall Semesters

	2003	2004	2005	2006	2007	2008
Full-Time	2,228	2,300	2,343	2,367	2,449	2,642
Percent	65.2%	66.7%	66.9%	65.8%	66.1%	68.5%
Part-Time	1,187	1,149	1,157	1,229	1,254	1,213
Percent	34.8%	33.3%	33.1%	34.2%	33.9%	31.5%
Total	3,415	3,449	3,500	3,596	3,703	3,855



Enrollment by Age and Gender



Age Group	Women		Men		Total	
	Enrolled	%	Enrolled	%	Enrolled	% of Total Enrollment
Under 18	91	65.0%	49	35.0%	140	3.6%
18	594	60.8%	383	39.2%	977	25.3%
19-23	1186	61.4%	746	38.6%	1932	50.1%
24-40	525	80.3%	129	19.7%	654	17.0%
Over 40	129	84.9%	23	15.1%	152	3.9%
Total	2,525	65.5%	1,330	34.5%	3,855	100.0%



Enrollment by Gender Fall 1999 – Fall 2008

Fall Semesters

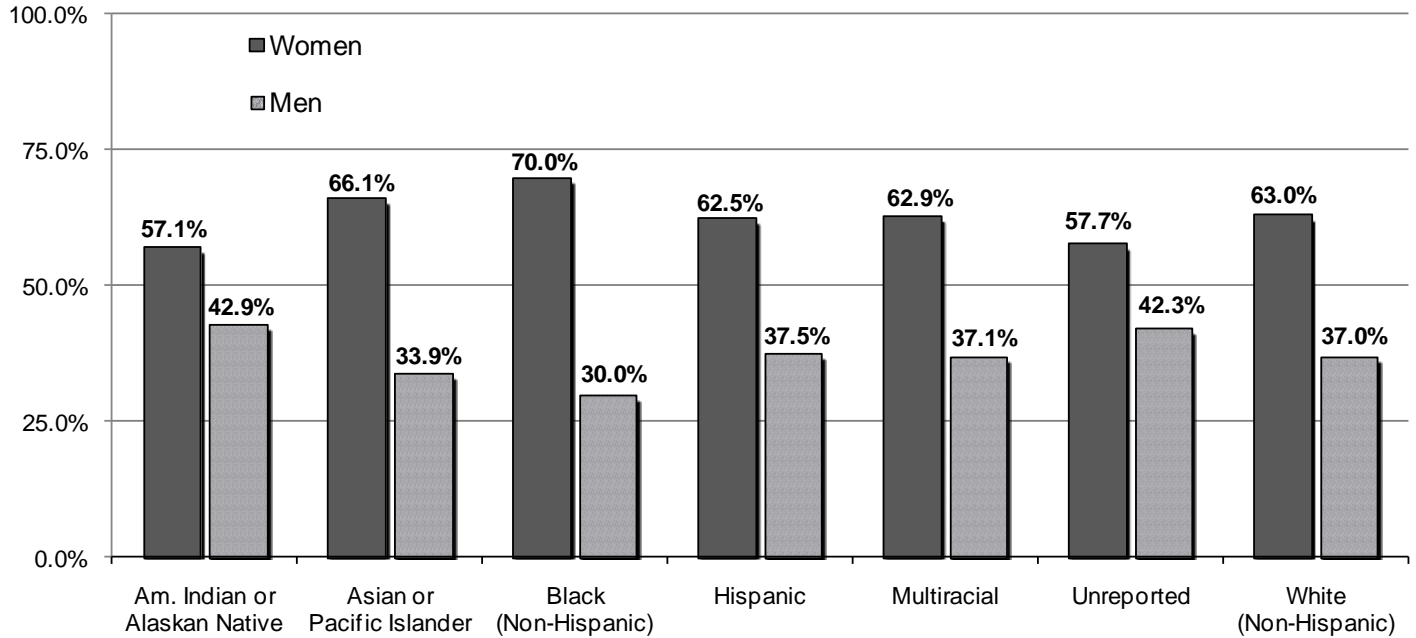
	1999	2000	2001	2002	2003	2004	2005	2006	2007	2008
Women	1,707	1,788	1,870	1,972	2,212	2,262	2,253	2,312	2,396	2,525
% Women	61.9%	61.9%	60.8%	63.3%	64.8%	65.6%	64.4%	64.3%	64.7%	65.5%
Men	1,051	1,102	1,204	1,144	1,203	1,187	1,247	1,284	1,307	1,330
% Men	38.1%	38.1%	39.2%	36.7%	35.2%	34.4%	35.6%	35.7%	35.3%	34.5%
Total	2,758	2,890	3,074	3,116	3,415	3,449	3,500	3,596	3,703	3,855

Enrollment by Ethnicity Fall 1999 – Fall 2008

Ethnicity	Fall Semesters									
	1999	2000	2001	2002	2003	2004	2005	2006	2007	2008
Am. Indian/Alaskan Native	10	6	9	12	2	3	4	5	6	7
Asian/Pacific Islander	40	39	48	66	78	67	51	58	55	62
Black, Non-Hispanic	566	624	712	709	806	914	1,102	1,199	1,261	1,392
Hispanic	42	51	60	59	65	52	71	91	94	80
Multiracial	26	32	31	31	30	45	65	64	69	62
White, Non-Hispanic	2,074	2,138	2,214	2,239	2,434	2,368	2,207	2,179	2,201	2,226
Unknown/Undeclared	0	0	0	0	0	0	0	0	17	26
TOTAL	2,758	2,890	3,074	3,116	3,415	3,449	3,500	3,596	3,703	3,855



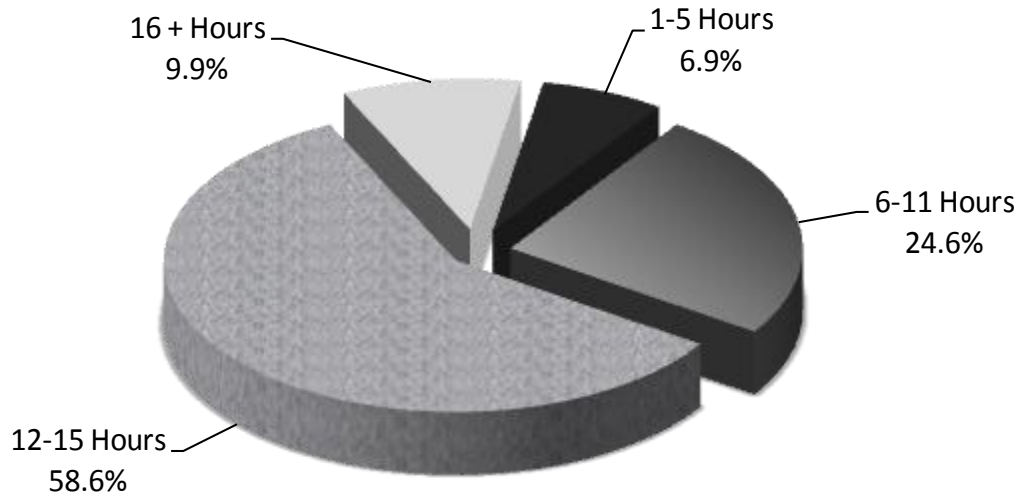
Enrollment by Ethnicity and Gender



Ethnicity	Women		Men		Total	
	Enrolled	%	Enrolled	%	Enrolled	% of Total Enrollment
Am. Indian/Alaskan Native	4	57.1%	3	42.9%	7	0.2%
Asian/Pacific Islander	41	66.1%	21	33.9%	62	1.6%
Black, Non-Hispanic	974	70.0%	418	30.0%	1392	36.1%
Hispanic	50	62.5%	30	37.5%	80	2.1%
Multiracial	39	62.9%	23	37.1%	62	1.6%
Unreported	15	57.7%	11	42.3%	26	0.7%
White, Non-Hispanic	1402	63.0%	824	37.0%	2226	57.7%
Total	2,525	65.5%	1,330	34.5%	3,855	100.0%



Enrollment by Credit Hours



	Fall Semesters					
	2003	2004	2005	2006	2007	2008
1-5 Hours	293	267	294	300	246	265
Percent	8.6%	7.7%	8.4%	8.3%	6.6%	6.9%
6-11 Hours	894	882	863	929	1,008	948
Percent	26.2%	25.67%	24.7%	25.8%	27.2%	24.6%
12-15 Hours	1,840	1,873	1,994	2,045	2,126	2,261
Percent	53.9%	54.3%	57.0%	56.9%	57.4%	58.6%
16 + Hours	388	427	349	322	323	381
Percent	11.4%	12.4%	10.0%	9.0%	8.7%	9.9%
Total	3,415	3,449	3,500	3,596	3,703	3,855



Enrollment by Classification

Entering freshmen are students who entered college for the first time as beginning freshmen, international freshmen, non-traditional freshmen, and traditional freshmen in the fall semester. Other Freshmen are those other than Entering Freshmen who have 30 hours or less. Sophomores are students who have earned between 30 and 59 credit hours. Juniors are students who have earned between 60 and 89 credit hours. Seniors are students who have earned 90 or more hours.

	Fall Semesters					
	2003	2004	2005	2006	2007	2008
All Freshmen	2,298	2,326	2,365	2,500	2,051	2,458
Entering Freshmen	1,122	1,070	1,177	1,214	1,158	1,213
Other Freshmen	1,176	1,256	1,188	1,286	893	1,245
Sophomores	1,015	1,047	1,055	1,032	1,552	1,251
Juniors	N/A	N/A	N/A	N/A	30	52
Seniors	N/A	N/A	N/A	N/A	0	29
Transient	17	13	12	16	13	15
All Other	85	63	68	48	57	50
Total Headcount	3,415	3,449	3,500	3,596	3,703	3,855



Enrollment by County of Residence

County of Residence	# of Students	% of Total
Georgia Counties	3,833	99.4%
<i>Atlanta Metropolitan Counties</i>	3,184	82.6%
<i>Other Georgia Counties</i>	649	16.8%
Out-of-State	18	0.5%
International	4	0.1%
Total	3,855	100.0%

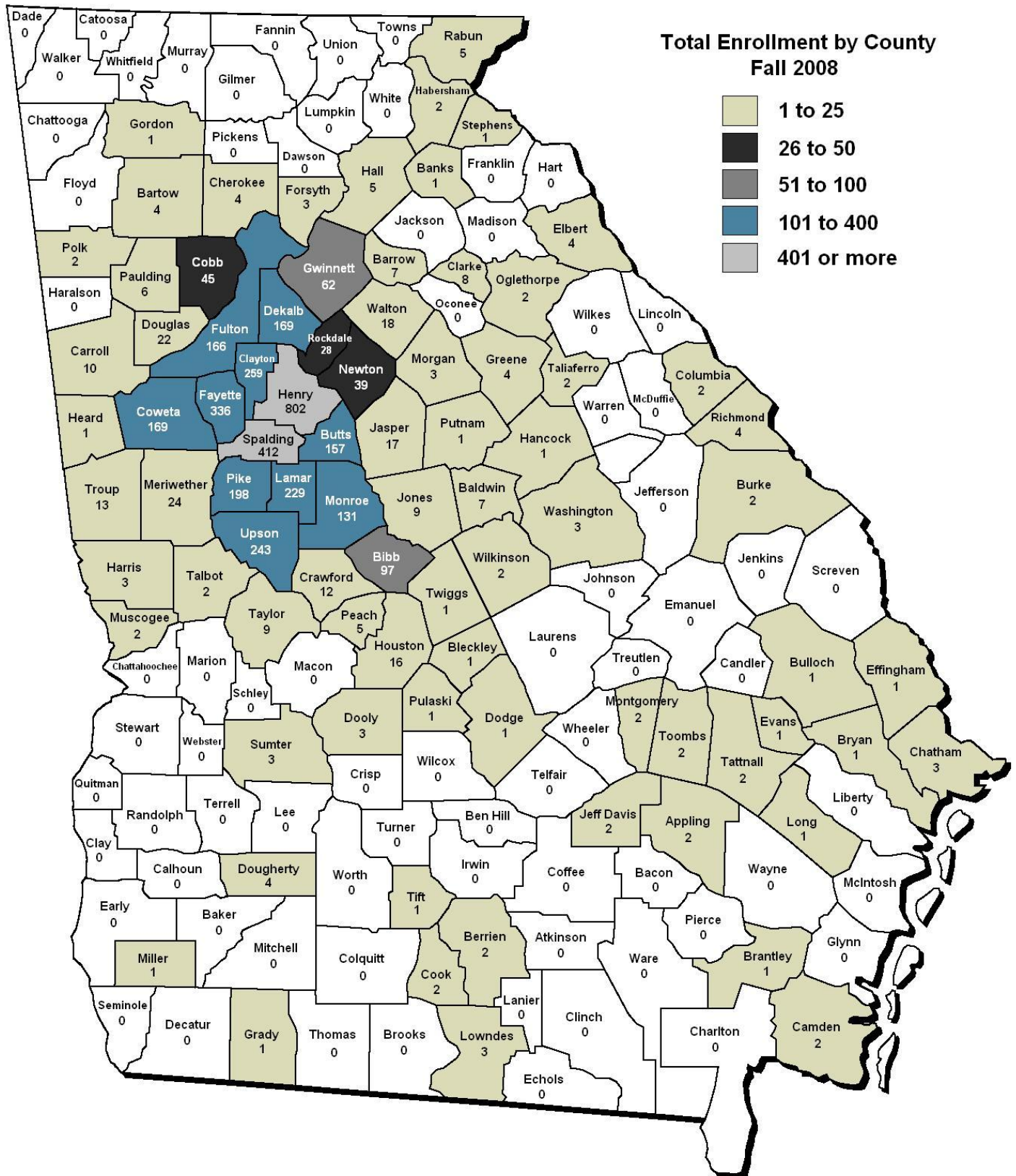
Atlanta Metropolitan Counties		Other Georgia Counties				Out-of-State	
Henry	803	Upson	243	Habersham	2	California	3
Spalding	412	Monroe	131	Jeff Davis	2	Texas	3
Fayette	336	Bibb	97	Montgomery	2	Florida	2
Clayton	259	Houston	16	Muscogee	2	Ohio	2
Lamar	229	Troup	13	Oglethorpe	2	Colorado	1
Pike	198	Crawford	12	Polk	2	Illinois	1
DeKalb	169	Jones	9	Talbot	2	Kentucky	1
Fulton	166	Taylor	9	Taliaferro	2	Massachusetts	1
Coweta	165	Clarke	8	Tattnall	2	North Carolina	1
Butts	157	Baldwin	7	Toombs	2	New York	1
Gwinnett	62	Hall	5	Wilkinson	2	Utah	1
Cobb	45	Peach	5	Banks	1	Overseas Military	1
Newton	39	Rabun	5	Bleckley	1	TOTAL	18
Rockdale	28	Dougherty	4	Brantley	1		
Meriwether	24	Elbert	4	Bryan	1		
Douglas	22	Greene	4	Bulloch	1		
Walton	18	Richmond	4	Dodge	1		
Jasper	17	Chatham	3	Effingham	1		
Carroll	10	Dooley	3	Evans	1		
Barrow	7	Harris	3	Gordon	1		
Paulding	6	Lowndes	3	Grady	1		
Bartow	4	Morgan	3	Hancock	1		
Cherokee	4	Sumter	3	Long	1		
Forsyth	3	Washington	3	Miller	1		
Heard	1	Appling	2	Pulaski	1		
TOTAL	3,184	Berrien	2	Putnam	1		
		Burke	2	Stephens	1		
		Camden	2	Tift	1		
		Columbia	2	Twiggs	1		
		Cook	2	TOTAL	649		

International	
Canada	1
Colombia	1
Netherlands	1
Peru	1
TOTAL	4

Note. Atlanta Metropolitan Counties consist of 28 counties.

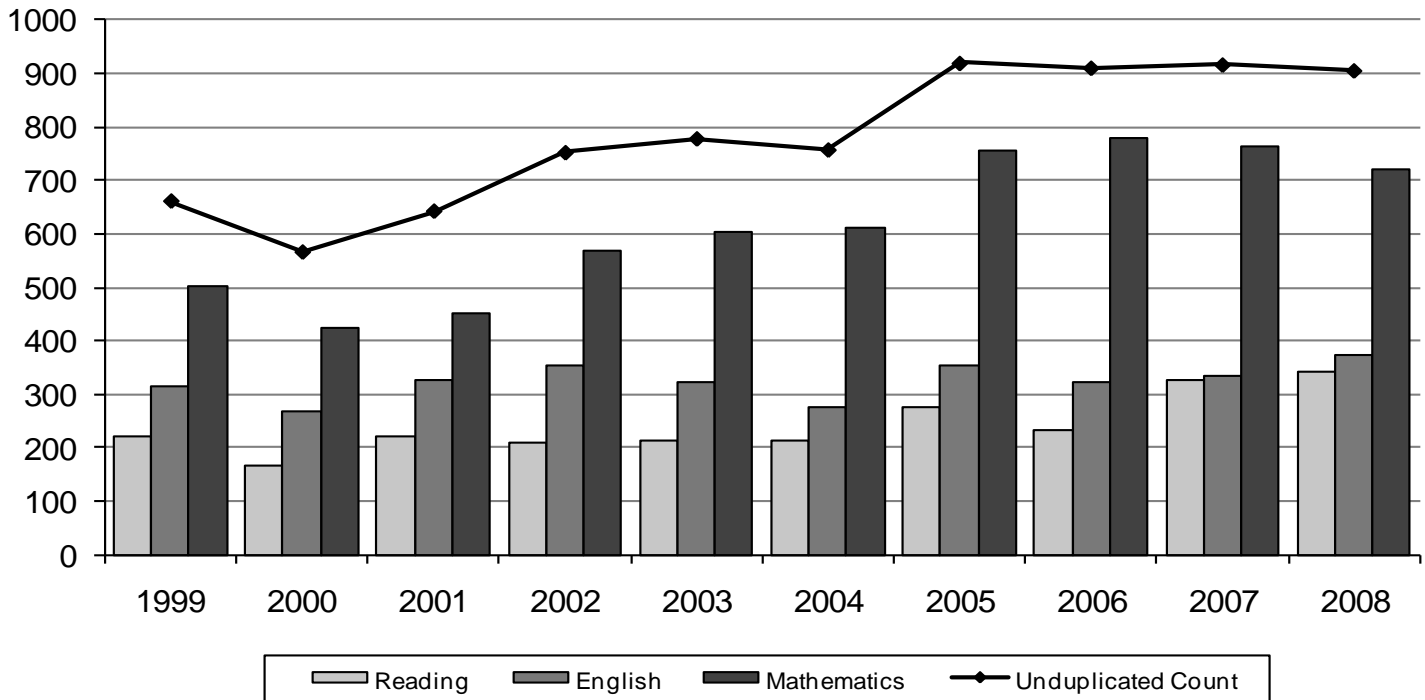


Enrollment by Georgia County of Residence





Ten Year Learning Support Enrollment



	Fall Semesters									
	1999	2000	2001	2002	2003	2004	2005	2006	2007	2008
Reading	220	165	220	208	213	212	276	231	326	340
English	314	267	325	354	323	276	353	322	333	372
Mathematics	501	423	452	568	602	612	756	778	762	720
Unduplicated Count	661	565	642	752	778	757	920	911	917	906
% of All Students	24.0%	19.6%	20.9%	24.1%	22.8%	21.9%	26.3%	25.3%	24.8%	23.5%

Note. Unduplicated count is the exact number of students that are enrolled in at least one learning support class during the semester.

Learning support classes in reading, English, and mathematics are designed to prepare students for success in their future college studies. They are an important component in fulfilling Gordon College’s mission of preparing students for transfer into and success in baccalaureate and professional degree programs. This table reflects only students who are enrolled in a learning support class and does not include all students with learning support requirements.



Enrollment by Declared Majors

BUSINESS AND SOCIAL SCIENCE DIVISION

	Freshman	Sophomore	Junior	Senior	TOTAL
Business Administration	191	154	0	0	345
Criminal Justice	40	31	0	0	71
History	17	9	0	0	26
Information Systems	3	9	0	0	12
Political Science	19	12	0	0	31
Psychology	53	35	0	0	88
Social Work	6	6	0	0	12
Sociology	6	5	0	0	11
Division Total	335	261	0	0	596

TEACHER EDUCATION DIVISION

	Freshman	Sophomore	Junior	Senior	TOTAL
Early Childhood/General Special Education	0	0	52	29	81
Teacher Education	197	171	0	0	368
Division Total	197	171	52	29	449

HUMANITIES DIVISION

	Freshman	Sophomore	Junior	Senior	TOTAL
Art	29	19	0	0	48
Communication	2	0	0	0	2
English	27	30	0	0	57
Foreign Language	5	1	0	0	6
General Studies	77	18	0	0	95
Music	14	3	0	0	17
Theater (Drama)	10	11	0	0	21
Division Total	164	82	0	0	246

MATHEMATICS AND NATURAL SCIENCES DIVISION

	Freshman	Sophomore	Junior	Senior	TOTAL
Agricultural & Environmental Sciences	12	7	0	0	19
Biological Sciences and Biology	82	38	0	0	120
Chemistry	5	11	0	0	16
Computer Science	29	11	0	0	40
Forestry	3	0	0	0	3
Mathematics	6	7	0	0	13
Physics	8	7	0	0	15
Pre-Dental Hygiene	35	20	0	0	55
Pre-Medical Technology	6	0	0	0	6
Pre-Occupational Therapy	5	2	0	0	7
Pre-Pharmacy	47	41	0	0	88
Pre-Physical Therapy	42	8	0	0	50
Pre-Physician Assistant	10	9	0	0	19
Pre-Respiratory Therapy	1	3	0	0	4
Division Total	291	164	0	0	455



Enrollment by Declared Majors

NURSING AND HEALTH SCIENCES DIVISION

	Freshman	Sophomore	Junior	Senior	TOTAL
Diagnostic Medical Sonography	5	4	0	0	9
Health Information Management	5	3	0	0	8
Health and Physical Education	17	11	0	0	28
Nuclear Medicine Technology	3	1	0	0	4
Nursing	2	276	0	0	278
Nursing (LPN Bridge)	2	2	0	0	4
Nursing (transfer)	3	9	0	0	12
Pre-Nursing	265	215	0	0	480
Pre-Nursing/LS	1	0	0	0	1
Radiologic Technology	25	5	0	0	30
Division Total	328	526	0	0	854

LEARNING SUPPORT

	Freshman	Sophomore	Junior	Senior	TOTAL
	972	8	0	0	980
Total Learning Support	972	8	0	0	980

UNDECLARED

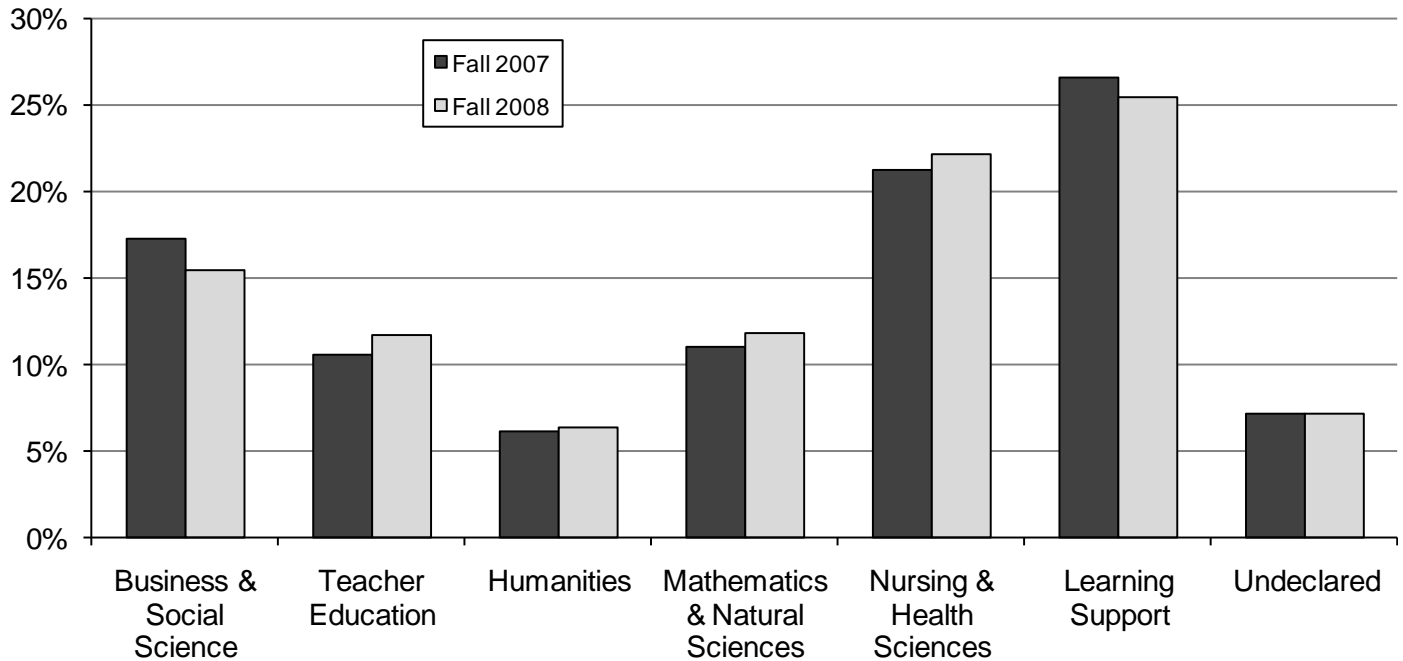
	Freshman	Sophomore	Junior	Senior	TOTAL
	228	47	0	0	275
Total Undeclared	228	47	0	0	275

TOTAL MAJORS BY DIVISION

	Freshman	Sophomore	Junior	Senior	TOTAL	% of Total
Business & Social Science	335	261	0	0	596	15.5%
Teacher Education	197	171	52	29	449	11.6%
Humanities	164	82	0	0	246	6.4%
Mathematics and Natural Sciences	291	164	0	0	455	11.8%
Nursing and Health Sciences	328	526	0	0	854	22.2%
Learning Support	972	8	0	0	980	25.4%
Undeclared	228	47	0	0	275	7.1%
Total	2,515	1,259	52	29	3,855	100.0%
% of Total	65.2%	32.7%	1.3%	0.8%	100.0%	



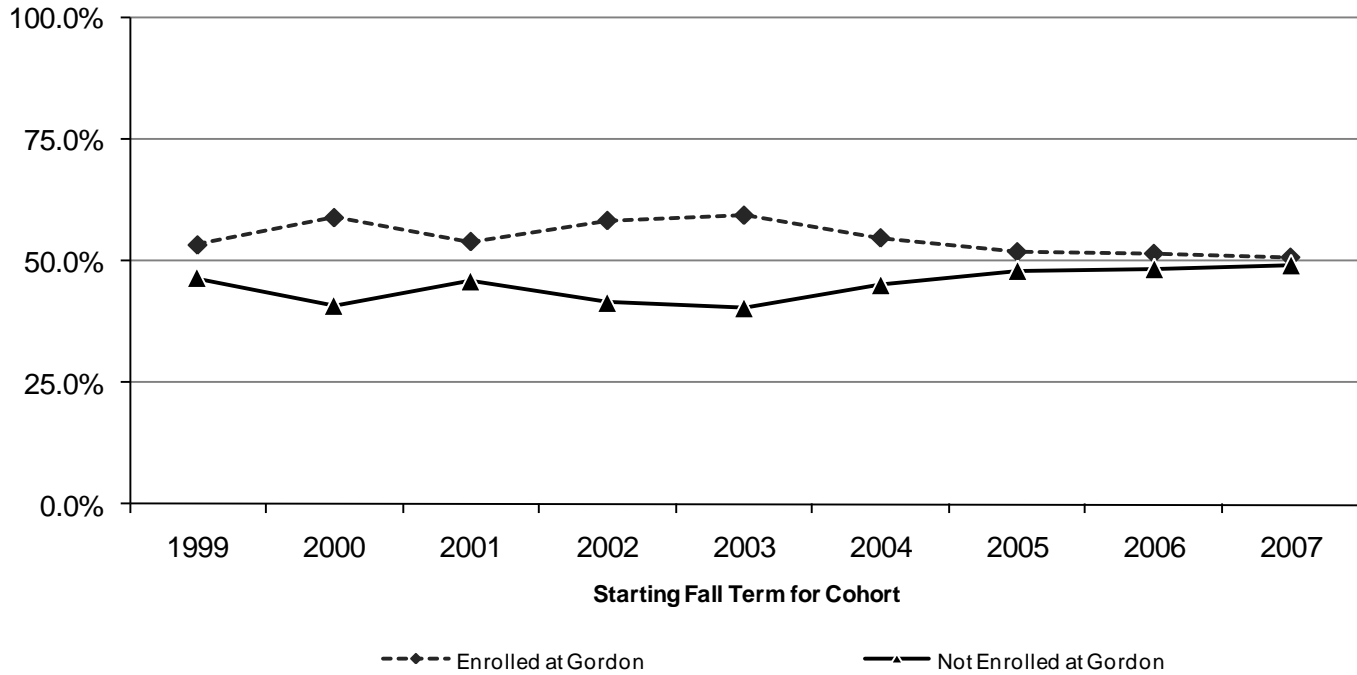
Enrollment by Division Fall 2007 & Fall 2008



Divisions	Fall 2007		Fall 2008	
	Students	%	Students	%
Business & Social Science	639	17.3%	596	15.5%
Teacher Education	391	10.6%	449	11.6%
Humanities	227	6.1%	246	6.4%
Mathematics and Natural Sciences	410	11.1%	455	11.8%
Nursing and Health Sciences	788	21.2%	854	22.2%
Learning Support	984	26.6%	980	25.4%
Undeclared	264	7.1%	275	7.1%
Total	3,703	100%	3,855	100%



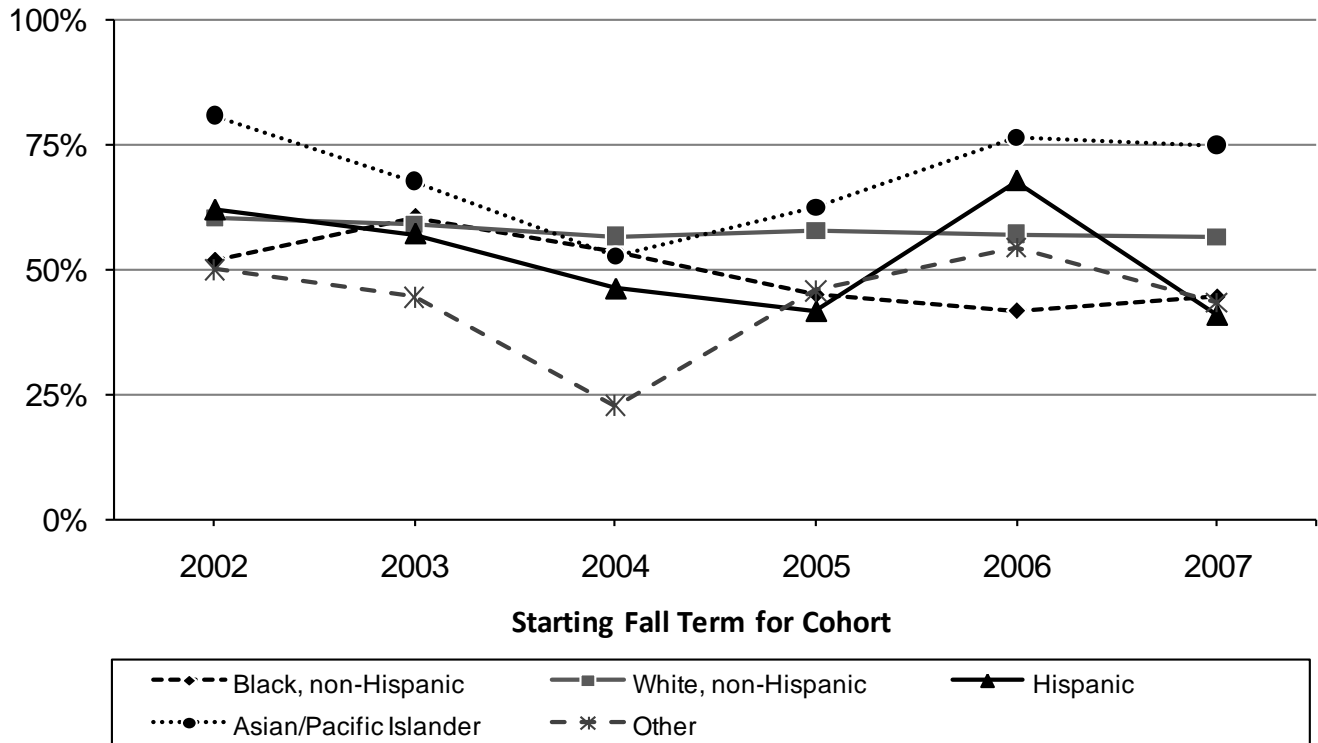
One Year Retention Rates First-Time Full-Time Freshmen



Starting Term	Initial Cohort	One Year Later			
		Enrolled at Gordon College		Not Enrolled at Gordon College	
		# of Students	% Retained	# of Students	% Not Retained
Fall 1999	876	468	53.5%	408	46.6%
Fall 2000	844	499	59.1%	345	40.9%
Fall 2001	990	536	54.1%	454	45.9%
Fall 2002	950	556	58.5%	394	41.5%
Fall 2003	1,060	632	59.6%	428	40.4%
Fall 2004	1,009	554	55.0%	455	45.1%
Fall 2005	1,102	573	52.0%	529	48.0%
Fall 2006	1,127	582	51.8%	545	48.4%
Fall 2007	1,048	533	50.9%	515	49.1%



First-Time Full-Time Freshmen Retention by Ethnicity

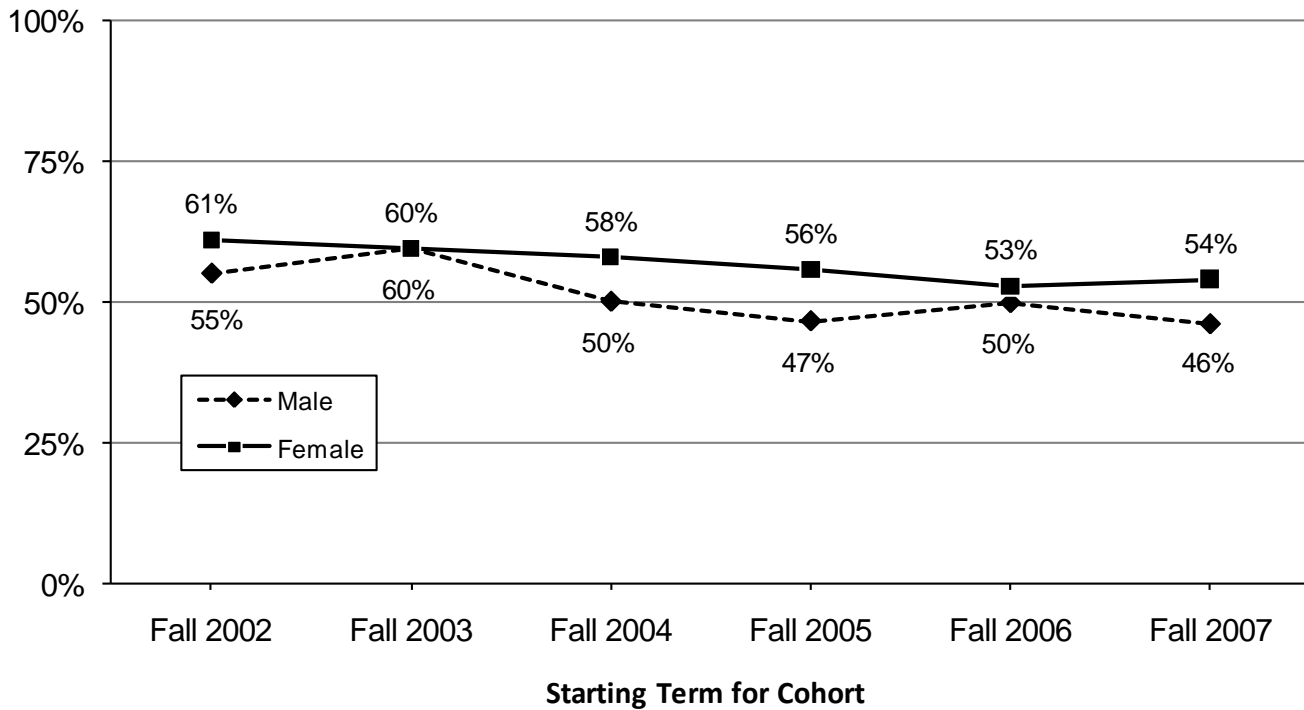


Retention One Year Later

Ethnicity	Fall 2002	Fall 2003	Fall 2004	Fall 2005	Fall 2006	Fall 2007
Asian/Pacific Islander	81%	68%	53%	63%	76%	75%
Black, Non-Hispanic	52%	61%	54%	45%	42%	45%
Hispanic	62%	57%	46%	42%	68%	41%
White, Non-Hispanic	60%	59%	57%	58%	57%	57%
Other	50%	44%	23%	46%	55%	43%



First-Time Full-Time Freshmen Retention by Gender



Retention One Year Later

Starting Term for Cohort	Women		Men	
	Initial Cohort	% Retained	Initial Cohort	% Retained
Fall 2002	544	61%	406	55%
Fall 2003	642	60%	418	60%
Fall 2004	618	58%	391	50%
Fall 2005	641	56%	461	47%
Fall 2006	656	53%	471	50%
Fall 2007	638	54%	410	46%



Students Living on Campus by Ethnicity and Gender

	Am. Indian/ Alaskan Native	Asian/ Pacific Islander	Black, Non- Hispanic	Hispanic	Multiracial	Unreported	White, Non- Hispanic	TOTAL
WOMEN								
Gordon Commons Building A	0	0	68	1	2	0	5	76
Gordon Commons Building B	0	1	79	0	1	0	19	100
Gordon Commons Building C	1	0	56	5	1	1	35	99
Gordon Village	0	1	177	5	8	1	61	253
Guillebeau Hall	0	0	7	1	1	0	7	16
Melton Hall	0	1	54	0	0	0	7	62
Total Women	1	3	441	12	13	2	134	606
Percent	0.2%	0.5%	72.8%	2.0%	2.1%	0.3%	22.1%	100.0%

	Am. Indian/ Alaskan Native	Asian/ Pacific Islander	Black, Non- Hispanic	Hispanic	Multiracial	Unreported	White, Non- Hispanic	TOTAL
MEN								
Gordon Commons Building A	0	1	51	0	1	1	12	66
Gordon Commons Building B	0	0	36	0	0	1	12	49
Gordon Commons Building C	1	0	6	0	1	1	41	50
Gordon Village	0	2	87	4	4	1	43	141
Guillebeau Hall	0	1	3	1	0	1	12	19
Melton Hall	0	0	55	1	3	0	12	71
Total Men	1	4	238	7	9	5	132	396
Percent	0.3%	1.0%	60.1%	1.8%	2.3%	1.3%	33.3%	100.0%

	Am. Indian/ Alaskan Native	Asian/ Pacific Islander	Black, Non- Hispanic	Hispanic	Multiracial	Unreported	White, Non- Hispanic	TOTAL
ETHNICITY								
Gordon Commons Building A	0	1	119	1	3	1	17	142
Gordon Commons Building B	0	1	115	0	1	1	31	149
Gordon Commons Building C	2	0	62	5	2	2	76	149
Gordon Village	0	3	264	9	12	2	104	394
Guillebeau Hall	0	1	10	3	1	1	19	35
Melton Hall	0	1	109	1	3	0	19	133
Total	2	7	679	19	22	7	266	1,002
Percent	0.2%	0.7%	67.8%	1.9%	2.2%	0.7%	26.5%	100.0%



Students Living on Campus by Classification and Gender

	Gordon Commons			Gordon Village	Guillebeau Hall	Melton Hall	Total	% Total
	Building A	Building B	Building C					
WOMEN								
Freshmen	75	96	85	232	10	51	549	90.6%
Sophomore	1	3	13	19	6	10	52	8.6%
Junior	0	1	1	2	0	1	5	0.8%
Senior	0	0	0	0	0	0	0	0.0%
Total Women	76	100	99	253	16	62	606	60.5%
MEN								
Freshmen	58	41	45	136	13	63	356	89.9%
Sophomore	8	8	5	5	6	8	40	10.1%
Junior	0	0	0	0	0	0	0	0.0%
Senior	0	0	0	0	0	0	0	0.0%
Total Men	66	49	50	141	19	71	396	39.5%
TOTAL CLASSIFICATION								
Freshmen	133	137	130	368	23	114	905	90.3%
Sophomore	9	11	18	24	12	18	92	9.2%
Junior	0	1	1	2	0	1	5	0.5%
Senior	0	0	0	0	0	0	0	0.0%
Total	142	149	149	394	35	133	1,002	100.0%



First-Time Freshmen

	Full-Time			Part-Time			Total Enrolled	% of Total
	Women	Men	Total	Women	Men	Total		
Am. Indian/Alaskan Native	1	1	2	0	0	0	2	0.2%
Asian/Pacific Islander	4	2	6	0	2	2	8	0.6%
Black, Non-Hispanic	321	173	494	18	17	35	529	42.0%
Hispanic	22	9	31	0	0	0	31	2.5%
Multiracial	14	8	22	2	0	2	24	1.9%
Unreported	5	5	10	2	1	3	13	1.0%
White, Non-Hispanic	318	275	593	33	26	59	652	51.8%
<hr/>								
Under 18	53	28	81	5	3	8	89	7.1%
18	517	329	846	29	28	57	903	71.7%
19-23	104	114	218	12	11	23	241	19.1%
24-40	11	2	13	7	3	10	23	1.8%
Over 40	0	0	0	2	1	3	3	0.2%
<hr/>								
Atlanta Metropolitan Area	557	390	947	46	37	83	1030	81.8%
Other Georgia	121	79	200	9	9	18	218	17.3%
Out-of-State	6	3	9	0	0	0	9	0.7%
International	1	1	2	0	0	0	2	0.2%
<hr/>								
Living on Campus	364	237	601	4	11	15	616	48.9%
Commuting to Campus	321	236	557	51	35	86	643	51.1%
<hr/>								
Total First-Time Freshmen	685	473	1,158	55	46	101	1,259	100.0%



First-Time Full-Time Freshmen Profile

	Women	%	Men	%	Total	% of Total
Am. Indian/Alaskan Native	1	50%	1	50%	2	0.2%
Asian/Pacific Islander	4	66.7%	2	33.3%	6	0.5%
Black, Non-Hispanic	321	65.0%	173	35.0%	494	42.7%
Hispanic	22	71.0%	9	29.0%	31	2.7%
Multiracial	14	63.6%	8	36.4%	22	1.9%
Unreported/Unknown	5	50%	5	50%	10	0.9%
White, Non-Hispanic	318	53.6%	275	46.4%	593	51.2%
<hr/>						
Under 18	53	65.4%	28	34.6%	81	7.1%
18	517	61.1%	329	38.9%	846	71.7%
19-23	104	47.7%	114	52.3%	218	19.1%
24-40	11	84.6%	2	15.4%	13	1.8%
Over 40	0	0.0%	0	0.0%	0	0.2%
<hr/>						
Atlanta Metropolitan Area	557	58.8%	390	41.2%	947	81.8%
Other Georgia	121	60.5%	79	39.5%	200	17.3%
Out-of-State	6	66.7%	3	33.3%	9	0.7%
International	1	50.0%	1	50.0%	2	0.2%
<hr/>						
Living on Campus	364	60.6%	237	39.4%	601	48.9%
Commuting to Campus	321	57.6%	236	42.4%	557	51.1%
<hr/>						
Total	685	59.2%	473	40.8%	1,158	100.0%

Note. Atlanta Metropolitan area consists of 28 counties.

SAT Scores

Average Score	
SAT Composite	874
SAT Math	432
SAT Critical Reading	442
Average H.S. GPA – 2.81	

Note. 62% of students submitted SAT scores.



First-Time Full-Time Freshmen Graduating High Schools

Name of High School	City	County	Number of Students
Pike County High School	Zebulon	Pike	49
Upson-Lee High School	Thomaston	Upson	49
Spalding High School	Griffin	Spalding	48
Union Grove High	McDonough	Henry	42
Mary Persons High School	Forsyth	Monroe	41
Ola High School	McDonough	Henry	40
Whitewater High School	Fayetteville	Fayette	35
Luella High	Locust Grove	Henry	34
Jackson High School	Jackson	Butts	29
Griffin High School	Griffin	Spalding	28
Lovejoy High School	Lovejoy	Clayton	24
Dutchtown High School	Hampton	Henry	22
Lamar County Comprehensive High School	Barnesville	Lamar	22
East Coweta High School	Sharpsburg	Coweta	20
Henry County High School	McDonough	Henry	20
Faith Academy-Covington	Loganville	Walton	19
Fayette County High School	Fayetteville	Fayette	19
Griffin Christian High School	Griffin	Spalding	19
Starr's Mill High School	Fayetteville	Fayette	18
Eagles Landing High School	McDonough	Henry	14
Stockbridge High School	Stockbridge	Henry	14
Northgate High School	Newnan	Coweta	13
Riverdale Senior High School	Riverdale	Clayton	13
Jonesboro High School	Jonesboro	Clayton	11
Mundy's Mill High	Jonesboro	Clayton	11
Benjamin E Mays High School	Atlanta	Fulton	10
King (ML) High School	Lithonia	DeKalb	10
Redan High School	Stone Mountain	DeKalb	10
Frederick Douglass High School	Atlanta	Fulton	9
Morrow High School	Morrow	Clayton	9
Alcovy High School	Covington	Newton	8
Grace Academy	Griffin	Spalding	8
Berkmar High School	Lilburn	Gwinnett	7
Lithonia High School	Lithonia	DeKalb	7
Sandy Creek High School	Tyrone	Fayette	7
Carver Comprehensive High School	Atlanta	Fulton	6
Creekside High School	Fairburn	Fulton	6
Mcintosh High School	Peachtree City	Fayette	6
North Clayton Comprehensive High School	College Park	Fulton	6
Rutland High School	Macon	Bibb	6
Sprayberry Senior High School	Marietta	Cobb	6
Stone Mountain High School	Stone Mountain	DeKalb	6
Tri-Cities High School	East Point	Fulton	6
Collins Hill High School	Suwanee	Gwinnett	5
New Creation Ctr	McDonough	Henry	5
Northeast Comprehensive High School	Macon	Bibb	5
Southwest Dekalb High School	Decatur	DeKalb	5



First-Time Full-Time Freshmen Graduating High Schools

Name of High School	City	County	Number of Students
Westside High School	Macon	Bibb	5
Booker T Washington High School	Atlanta	Fulton	4
Cedar Grove High School	Ellenwood	Clayton	4
Central Gwinnett High School	Lawrenceville	Gwinnett	4
Eastside High School	Covington	Newton	4
Faith Academy-Covington	Covington	Newton	4
Lithia Springs Comprehensive High School	Lithia Springs	Douglas	4
Loganville High School	Loganville	Walton	4
Manchester High School	Manchester	Meriwether	4
Meachern High School	Powder Springs	Cobb	4
Miller Grove High School	Lithonia	DeKalb	4
South Cobb High School	Austell	Cobb	4
South Gwinnett High School	Snellville	Gwinnett	4
Taliaferro County High School	Crawfordville	Taliaferro	4
Taylor County High School	Butler	Taylor	4
Tucker High School	Tucker	DeKalb	4
Cartersville High School	Cartersville	Bartow	3
Druid Hills High School	Atlanta	Fulton	3
Faith Christian Academy	Hoboken	Brantley	3
Flint River Academy Inc	Woodbury	Meriwether	3
Henry W Grady High School	Atlanta	Fulton	3
Newnan High School	Newnan	Coweta	3
Newton County High School	Covington	Newton	3
Northside High School	Warner Robins	Houston	3
Rabun County High	Tiger	Rabun	3
Rockdale County High School	Conyers	Rockdale	3
Social Circle High School	Social Circle	Walton	3
Southwest High School	Macon	Bibb	3
The Campus	Peachtree City	Fayette	3
Westlake High School	Atlanta	Fulton	3
Academy Of Richmond County	Augusta	Richmond	2
Alan C Pope High School	Marietta	Cobb	2
Apalachee High	Winder	Barrow	2
Banneker High School	College Park	Fulton	2
Berrien County High School	Nashville	Berrien	2
Bible Baptist Christian School	Riverdale	Clayton	2
Callaway High School	Hogansville	Troup	2
Camden County High School	Kingsland	Camden	2
Central High School	Macon	Bibb	2
Clarke Central High School	Athens	Clarke	2
Clarkston High School	Clarkston	DeKalb	2
Columbia High School	Decatur	DeKalb	2
Dooly County High School	Vienna	Dooly	2
East Paulding High School	Dallas	Paulding	2
Forest Park Senior High School	Forest Park	Clayton	2
Grayson High School	Loganville	Walton	2
Greenforest Christian Academy	Decatur	DeKalb	2



First-Time Full-Time Freshmen Graduating High Schools

Name of High School	City	County	Number of Students
Greenville High School	Greenville	Meriwether	2
Harris County High School	Hamilton	Harris	2
Heritage High School	Conyers	Rockdale	2
Houston County High School	Warner Robins	Houston	2
Hutchings Career Ctr	Macon	Bibb	2
Jones County High School	Gray	Jones	2
Lakeside High School	Atlanta	Fulton	2
Marietta High School	Marietta	Cobb	2
Mcnair Senior High School	Atlanta	Fulton	2
Montgomery County High School	Mt Vernon	Montgomery	2
Mount De Sales Academy	Macon	Bibb	2
Mount Zion High School	Jonesboro	Clayton	2
North Cobb High School	Kennesaw	Cobb	2
Oglethorpe County High School	Lexington	Oglethorpe	2
Open Campus High School	Atlanta	Fulton	2
Parkview High School	Lilburn	Gwinnett	2
Peach County High School	Ft Valley	Peach	2
Robert L Osborne High School	Marietta	Cobb	2
Shiloh High School	Lithonia	DeKalb	2
South Atlanta High School	Atlanta	Fulton	2
South Paulding High School	Douglasville	Douglas	2
Southside Comprehensive High School	Atlanta	Fulton	2
Stephenson High School	Stone Mountain	DeKalb	2
Troup County Comprehensive High School	La Grange	Troup	2
Wilkinson County Senior High School	Irwinton	Wilkinson	2
Winder-Barrow High School	Winder	Barrow	2
Alonzo A Crim High School	Atlanta	Fulton	1
Appling County Comprehensive High School	Baxley	Appling	1
Atlanta Country Day School	Atlanta	Fulton	1
Avondale High School	Avondale Estates	DeKalb	1
Bacon County High School	Alma	Bacon	1
Baldwin High School	Milledgeville	Baldwin	1
Bleckley County High School	Cochran	Bleckley	1
Brookwood High School	Snellville	Gwinnett	1
Cairo High School	Cairo	Grady	1
Campbell High School	Smyrna	Cobb	1
Carleton J Kell High School	Marietta	Cobb	1
Carrollton High School	Carrollton	Carroll	1
Cass Comprehensive High School	Cartersville	Bartow	1
Cedartown High School	Cedartown	Polk	1
Chapel Hill High School	Douglasville	Douglas	1
Christian Heritage Academy	Columbus	Muscogee	1
Claxton High School	Claxton	Evans	1
Cook High School	Adel	Cook	1
Cottage School	Roswell	Fulton	1
Crawford County High School	Roberta	Crawford	1
Cross Keys Christian Academy	Macon	Bibb	1



First-Time Full-Time Freshmen Graduating High Schools

Name of High School	City	County	Number of Students
Dacula High School	Dacula	Gwinnett	1
Decatur High School	Decatur	DeKalb	1
Douglas County High School	Douglasville	Douglas	1
Duluth High School	Duluth	Gwinnett	1
Eagles Landing Christian Academy	McDonough	Henry	1
East Hall High School	Gainesville	Hall	1
Elbert County Comprehensive High School	Elberton	Elberton	1
First Presbyterian Day School	Macon	Bibb	1
Forest Park Street School	Forest Park	Clayton	1
Furtah Preparatory School	Acworth	Cobb	1
George Walton Comprehensive High School	Marietta	Cobb	1
Greenbrier High School	Evans	Columbia	1
Greene/Taliaferro Comprehensive	Greensboro	Greene	1
Hart County Comprehensive High School	Hartwell	Hart	1
Hawkinsville High School	Hawkinsville	Pulaski	1
Heard County High School	Franklin	Heard	1
Hiram High School	Hiram	Paulding	1
Jackson County Comprehensive High School	Jefferson	Jackson	1
Jasper County High School	Monticello	Jasper	1
Jeff Davis High School	Hazlehurst	Jeff Davis	1
Kings Way Christian School	Douglasville	Douglas	1
Lagrange High School	La Grange	Troup	1
Lassiter High School	Marietta	Cobb	1
Lee County High School	Leesburg	Lee	1
Loganville Christian Academy	Loganville	Walton	1
Long County High School	Ludowici	Long	1
Lowndes High School	Valdosta	Lowndes	1
Meadowcreek High School	Norcross	Gwinnett	1
Monroe Area Comprehensive High School	Monroe	Walton	1
Morgan County High School	Madison	Morgan	1
Mount Vernon Christian School	Stockbridge	Henry	1
North Atlanta High School	Atlanta	Fulton	1
North Forsyth High School	Cumming	Forsyth	1
North Gwinnett High School	Suwanee	Gwinnett	1
North Springs High School	Atlanta	Fulton	1
Northeast Atlanta Christian School	Lawrenceville	Gwinnett	1
Oakwood High School	Marietta	Cobb	1
Our Lady of Mercy	Fairburn	Fulton	1
Pathway Christian School	Dalton	Whitfield	1
Patrick Henry High	Stockbridge	Henry	1
Peachtree Ridge High School	Suwanee	Gwinnett	1
Peoples Baptist Academy Morrow	McDonough	Henry	1
Perry High School	Perry	Houston	1
Renaissance Academy	Macon	Bibb	1
Riverwood High School	Atlanta	Fulton	1
Robert S Alexander Comprehensive	Douglasville	Douglas	1
Robert W Groves High School	Garden City	Chatham	1



First-Time Full-Time Freshmen Graduating High Schools

Name of High School	City	County	Number of Students
Roswell High School	Roswell	Fulton	1
Salem High School	Conyers	Rockdale	1
Savannah Christian School	Savannah	Chatham	1
Sol C Johnson High School	Savannah	Chatham	1
South Forsyth High School	Cumming	Forsyth	1
South Metro Psyceduc Program	Woodstock	Cherokee	1
Southeast Bulloch County High School	Brooklet	Bulloch	1
Southwest Atlanta Christian Academy	Atlanta	Fulton	1
Stephens County High School	Toccoa	Stephens	1
Temple High School	Temple	Carroll	1
The Lighthouse	Fayetteville	Fayette	1
The Weber School	Atlanta	Fulton	1
Therrell High School	Atlanta	Fulton	1
Tift County High School	Tifton	Tift	1
Towers High School	Decatur	DeKalb	1
Veritas Classical Schools	Alpharetta	Fulton	1
Vidalia High School	Vidalia	Toombs	1
Villa Rica High School	Villa Rica	Carroll	1
Warner Robins High School	Warner Robins	Houston	1
Washington County High School	Sandersville	Washington	1
Wesleyan School	Norcross	Gwinnett	1
Windsor Academy	Macon	Bibb	1
Woodward Academy	College Park	Fulton	1
Worth County High School	Sylvester	Worth	1
			1,092



First-Time Full-Time Freshmen Living on Campus by Gender and Ethnicity

	Am. Indian/ Alaskan Native	Asian/ Pacific Islander	Black, Non- Hispanic	Hispanic	Multiracial	Unreported	White, Non- Hispanic	TOTAL
WOMEN								
Gordon Commons Building A	0	0	46	1	2	0	5	54
Gordon Commons Building B	0	0	62	0	1	0	16	79
Gordon Commons Building C	1	0	25	5	1	1	16	49
Gordon Village	0	0	111	3	7	1	45	167
Guillebeau Hall	0	0	0	1	0	0	3	4
Melton Hall	0	0	9	0	0	0	2	11
Total Women	1	0	253	10	11	2	87	364
Percent	0.3%	0.0%	69.5%	2.7%	3.0%	0.5%	23.9%	100.0%

	Am. Indian/ Alaskan Native	Asian/ Pacific Islander	Black, Non- Hispanic	Hispanic	Multiracial	Unreported	White, Non- Hispanic	TOTAL
MEN								
Gordon Commons Building A	0	0	28	0	0	0	6	34
Gordon Commons Building B	0	0	24	0	0	1	4	29
Gordon Commons Building C	0	0	3	0	0	0	29	32
Gordon Village	0	1	58	4	3	1	36	103
Guillebeau Hall	0	0	1	1	0	1	6	10
Melton Hall	0	0	23	0	2	0	4	29
Total Men	0	1	137	5	5	3	85	237
Percent	0.0%	0.4%	57.8%	2.5%	2.1%	1.3%	35.9%	100.0%

	Am. Indian/ Alaskan Native	Asian/ Pacific Islander	Black, Non- Hispanic	Hispanic	Multiracial	Unreported	White, Non- Hispanic	TOTAL
ETHNICITY								
Gordon Commons Building A	0	0	74	1	2	0	11	88
Gordon Commons Building B	0	0	86	0	1	1	20	108
Gordon Commons Building C	1	0	28	5	1	1	45	81
Gordon Village	0	1	169	7	10	2	81	270
Guillebeau Hall	0	0	1	3	0	1	9	14
Melton Hall	0	0	32	0	2	0	6	40
Total	1	1	390	16	16	5	172	601
Percent	0.2%	0.2%	64.9%	2.7%	2.7%	0.8%	28.6%	100.0%



First-Time Full-Time Freshmen by County of Residence

County of Residence	# of Students	% of Total
Georgia Counties	1,147	99.1%
<i>Atlanta Metropolitan Counties</i>	947	81.8%
<i>Other Georgia Counties</i>	200	17.3%
Out-of-State	9	0.8%
International	2	0.2%
Total	1,158	100.0%

Atlanta Metropolitan Counties	
Henry	218
Spalding	106
Fayette	94
Dekalb	80
Clayton	70
Fulton	67
Pike	57
Butts	45
Coweta	41
Lamar	39
Gwinnett	31
Cobb	24
Newton	16
Rockdale	11
Walton	9
Douglas	8
Meriwether	7
Barrow	5
Bartow	4
Carroll	4
Paulding	4
Jasper	3
Cherokee	2
Forsyth	2
TOTAL	947

Other Georgia Counties					
Upson	57	Cook	1		
Monroe	36	Crawford	1		
Bibb	31	Dougherty	1		
Houston	7	Effingham	1		
Clarke	5	Elbert	1		
Taylor	5	Evans	1		
Troup	5	Grady	1		
Hall	3	Greene	1		
Peach	3	Harris	1		
Rabun	3	Jeff Davis	1		
Berrien	2	Long	1		
Camden	2	Lowndes	1		
Chatham	2	Morgan	1		
Dooly	2	Muscogee	1		
Jones	2	Oglethorpe	1		
Montgomery	2	Polk	1		
Richmond	2	Pulaski	1		
Taliaferro	2	Stephens	1		
Wilkinson	2	Talbot	1		
Appling	1	Tift	1		
Baldwin	1	Toombs	1		
Bleckley	1	Washington	1		
Bryan	1				
Columbia	1	TOTAL	200		

Out-of-State	
California	2
Colorado	1
Florida	1
Illinois	1
Maryland	1
Ohio	1
Texas	2
TOTAL	9

International	
Canada	1
Peru	1
TOTAL	2

Note. Atlanta Metropolitan Counties consist of 28 counties.



Learning Support Students Enrolled by Ethnicity and Gender

Ethnicity*

Ethnicity	One Learning Support course	Two Learning Support courses	Three Learning Support courses	Total Ethnicity	% of Total
WOMEN					
Am. Indian/Alaskan Native	1	0	0	1	0.2%
Asian/Pacific Islander	4	2	0	6	1.1%
Black, Non-Hispanic	177	94	72	343	63.9%
Hispanic	8	2	1	11	2.0%
Multiracial	6	4	0	10	1.9%
White, Non-Hispanic	126	25	15	166	30.9%
Total Women	322	127	88	537	59.8%

MEN

Am. Indian/Alaskan Native	0	0	0	0	0.0%
Asian/Pacific Islander	3	1	0	4	1.1%
Black, Non-Hispanic	89	60	49	198	53.7%
Hispanic	2	2	2	6	1.6%
Multiracial	5	1	1	7	1.9%
White, Non-Hispanic	109	35	10	154	41.7%
Total Men	208	99	62	369	40.2%

TOTAL ETHNICITY

Am. Indian/Alaskan Native	1	0	0	1	0.1%
Asian/Pacific Islander	7	3	0	10	1.1%
Black, Non-Hispanic	266	154	121	541	59.7%
Hispanic	10	4	3	17	1.9%
Multiracial	11	5	1	17	1.9%
White, Non-Hispanic	235	60	25	320	35.3%
Total	530	226	150	906	100.0%

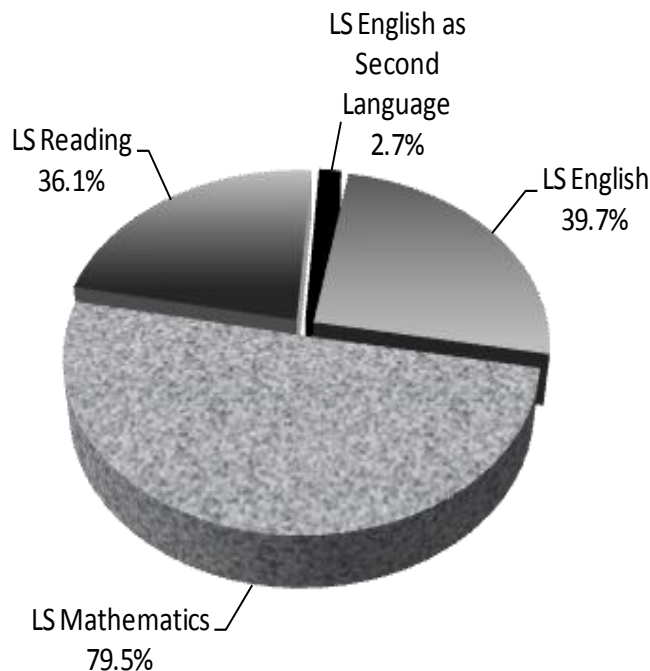
Gender*

Enrolled in:	Women	%	Men	%	Total	% of Total
One Learning Support course	322	60.8%	208	39.2%	530	58.5%
Two Learning Support courses	127	56.2%	99	43.8%	226	24.9%
Three Learning Support courses	88	58.7%	62	41.3%	150	16.6%
Total	537	59.3%	369	40.7%	906	100.0%

*Unduplicated count.



Learning Support Course Enrollment

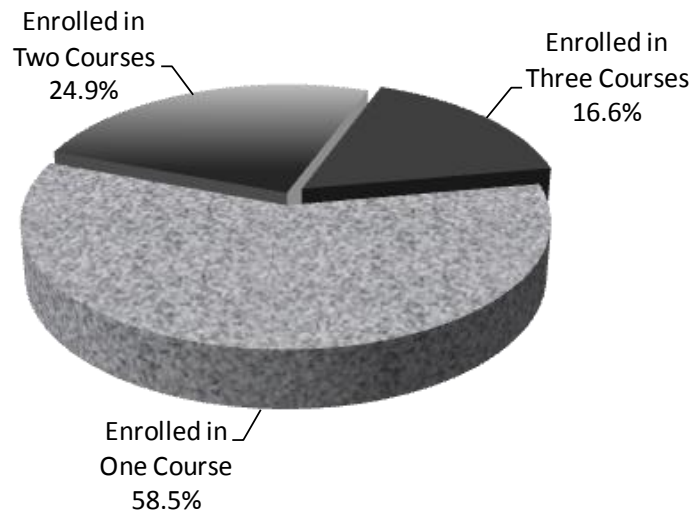


Course Title	Total	Percent
Mathematics		
MATH 0097 – Beginning Algebra	407	44.9%
MATH 0098 – Algebra	187	20.6%
MATH 0099 – Intermediate Algebra	126	14.0%
Total Mathematics	720	79.5%
English		
ENGL 0097 – Basic Composition	229	25.3%
ENGL 0099 – Pre-College Composition	131	14.4%
Total English	360	39.7%
Reading		
READ 0097 – Basic Reading	128	14.1%
READ 0099 – Pre-College Reading	199	22.0%
Total Reading	327	36.1%
English as a Second Language		
ENGL 0090 – ESL LS English	12	1.3%
READ 0090 – ESL LS Reading	13	1.4%
Total ESL	25	2.7%
TOTAL ENROLLMENT OF LS COURSES	1,432	100.0%

Note. Percent is out of the 906 fall 2008 students who were enrolled in learning support courses.



Learning Support Enrollment by Course



Enrolled in:	# of Students	% of Total
One Learning Support course	530	58.5%
Two Learning Support courses	226	24.9%
Three Learning Support courses	150	16.6%
Total	906	100.0%

Enrolled in One LS Course = 530

Course	Students	Course	Students
Algebra	125	ESL Learning Support Reading	5
Basic Composition	27	Intermediate Algebra	104
Basic Reading	7	Pre-College Composition	28
Beginning Algebra	195	Pre-College Reading	33
ESL Learning Support English	6		

Enrolled in Two LS Courses = 226

Course 1	Course 2	Students
Beginning Algebra	Basic Composition	29
	Pre-College Reading	22
	Basic Reading	15
	ESL Learning Support Reading	2
TOTAL		68
Algebra	Pre-College Composition	12
	Basic Composition	9
	Pre-College Reading	15
	Basic Reading	4
TOTAL		40
Intermediate Algebra	Pre-College Reading	6
	Basic Reading	1
TOTAL		7

Note. Data reflects the unduplicated count of learning support students who enrolled in at least one learning support course.



Learning Support Enrollment by Course

Enrolled in Two LS Courses (continued)

<i>Course 1</i>	<i>Course 2</i>	<i>Students</i>
Pre-College Composition	Beginning Algebra	20
	Intermediate Algebra	10
	Pre-College Reading	22
	Basic Reading	5
TOTAL		57
Basic Composition	Intermediate Algebra	1
	Pre-College Reading	28
	Basic Reading	22
TOTAL		51
ESL Learning Support English	Pre-College Reading	1
	ESL Learning Support Reading	2
TOTAL		3

Enrolled in Three LS Courses = 150

<i>Course 1</i>	<i>Course 2</i>	<i>Course 3</i>	<i>Students</i>
Basic Composition	Basic Reading	Beginning Algebra	60
		Algebra	5
	Pre-College Reading	Beginning Algebra	36
		Algebra	11
ESL Learning Support Reading	Algebra	1	
TOTAL			113
Pre-College Composition	Basic Reading	Beginning Algebra	6
		Algebra	2
		Intermediate Algebra	1
	Pre-College Reading	Algebra	3
Intermediate Algebra		3	
TOTAL			15
Beginning Algebra	Pre-College Composition	Pre-College Reading	19
	ESL Learning Support Reading	ESL Learning Support English	3
TOTAL			22

Note. Data reflects the unduplicated count of learning support students who enrolled in at least one learning support course.



Learning Support Students Enrolled by County of Residence

County of Residence	# of Students	% of Total
Georgia Counties	898	99.1%
<i>Atlanta Metropolitan Counties</i>	747	82.4%
<i>Other Georgia Counties</i>	151	16.7%
Out-of-State	6	0.7%
International	2	0.2%
Total	906	100.0%

Atlanta Metropolitan Counties	
Henry	143
DeKalb	91
Clayton	79
Fulton	77
Fayette	59
Spalding	57
Lamar	45
Butts	35
Pike	33
Coweta	27
Gwinnett	25
Cobb	15
Newton	13
Rockdale	11
Douglas	8
Walton	7
Meriwether	6
Bartow	3
Carroll	3
Barrow	2
Cherokee	2
Forsyth	2
Jasper	2
Paulding	2
TOTAL	747

Other Georgia Counties					
Upson	38	Camden	1		
Bibb	31	Columbia	1		
Monroe	29	Dougherty	1		
Houston	4	Elbert	1		
Taylor	4	Evans	1		
Troup	4	Grady	1		
Crawford	3	Jeff Davis	1		
Hall	3	Long	1		
Peach	3	Montgomery	1		
Baldwin	2	Morgan	1		
Chatham	2	Oglethorpe	1		
Clarke	2	Rabun	1		
Greene	2	Richmond	1		
Taliaferro	2	Sumter	1		
Wilkinson	2	Talbot	1		
Berrien	1	Tattnall	1		
Bleckley	1	Washington	1		
Burke	1	TOTAL	151		

Out-of-State	
Colorado	1
Florida	1
Massachusetts	1
Ohio	1
Texas	1
Overseas Military	1
TOTAL	6

International	
Canada	1
Peru	1
TOTAL	2

Note. Atlanta Metropolitan Counties consists of 28 counties.



Learning Support Students Living on Campus by Gender and Ethnicity

	Am. Indian/ Alaskan Native	Asian/ Pacific Islander	Black, Non- Hispanic	Hispanic	Multiracial	White, Non- Hispanic	TOTAL
WOMEN							
Gordon Commons Building A	0	0	41	0	1	2	44
Gordon Commons Building B	0	0	59	0	1	7	67
Gordon Commons Building C	0	0	25	4	1	6	36
Gordon Village	0	0	105	3	3	14	125
Guillebeau Hall	0	0	0	0	0	0	0
Melton Hall	0	1	14	0	0	1	16
Total Women	0	1	244	7	6	30	288
Percent	0.0%	0.3%	84.7%	2.4%	2.1%	10.4%	100.0%
MEN							
Gordon Commons Building A	0	0	29	0	1	4	34
Gordon Commons Building B	0	0	23	0	0	3	26
Gordon Commons Building C	0	0	5	0	0	13	18
Gordon Village	0	2	48	3	1	21	75
Guillebeau Hall	0	0	0	2	0	2	4
Melton Hall	0	0	30	0	2	1	33
Total Men	0	2	135	5	4	44	190
Percent	0.0%	1.1%	71.1%	2.6%	2.1%	23.2%	100.0%
ETHNICITY							
Gordon Commons Building A	0	0	70	0	2	6	78
Gordon Commons Building B	0	0	82	0	1	10	93
Gordon Commons Building C	0	0	30	4	1	19	54
Gordon Village	0	2	153	6	4	35	200
Guillebeau Hall	0	0	0	2	0	2	4
Melton Hall	0	1	44	0	2	2	49
Total	0	3	379	12	10	74	478
Percent of Total	0.0%	0.6%	79.3%	2.5%	2.1%	15.5%	100.0%



Learning Support First-Time Freshmen Enrolled Fall 2008

Ethnicity*

Ethnicity	One Learning Support course	Two Learning Support courses	Three Learning Support courses	Total Ethnicity	% of Total
WOMEN					
Am. Indian/Alaskan Native	0	0	0	0	0.0%
Asian/Pacific Islander	1	1	0	2	0.5%
Black, Non-Hispanic	114	74	63	251	65.4%
Hispanic	8	1	1	10	2.6%
Multiracial	5	4	0	9	2.3%
White, Non-Hispanic	76	22	14	112	29.2%
Total Women	204	102	78	384	59.8%
MEN					
Am. Indian/Alaskan Native	0	0	0	0	0.0%
Asian/Pacific Islander	2	1	0	3	1.2%
Black, Non-Hispanic	54	44	43	141	54.6%
Hispanic	1	2	2	5	1.9%
Multiracial	2	0	1	3	1.2%
White, Non-Hispanic	65	32	9	106	41.1%
Total Men	124	79	55	258	40.2%
TOTAL ETHNICITY					
Am. Indian/Alaskan Native	0	0	0	0	0.0%
Asian/Pacific Islander	3	2	0	5	0.8%
Black, Non-Hispanic	168	118	106	392	61.0%
Hispanic	9	3	3	15	2.3%
Multiracial	7	4	1	12	1.9%
White, Non-Hispanic	141	54	23	218	34.0%
Total	328	181	133	642	100.0%

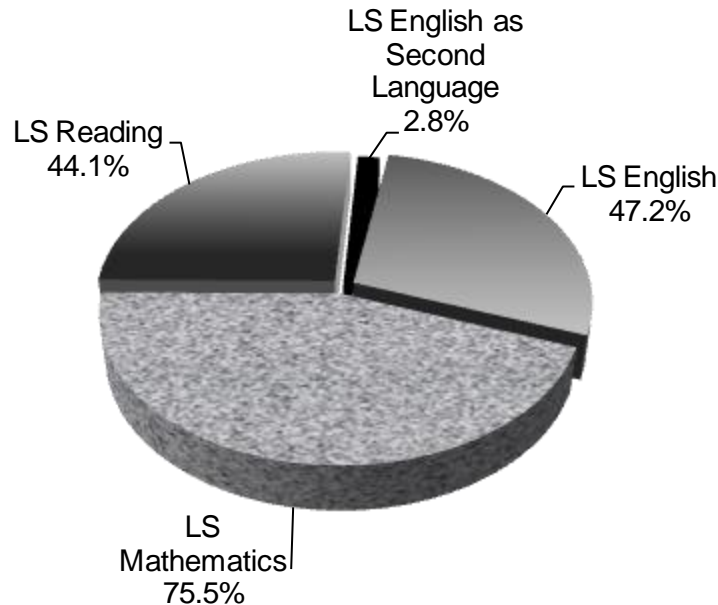
Gender*

Enrolled in:	Women	%	Men	%	Total
One Learning Support course	204	62.2%	124	37.8%	328
Two Learning Support courses	102	56.4%	79	43.6%	181
Three Learning Support courses	78	58.6%	55	41.4%	133
Total	384	59.7%	259	40.3%	642

*Unduplicated count.



Learning Support First-Time Freshmen Learning Support Course Enrollment

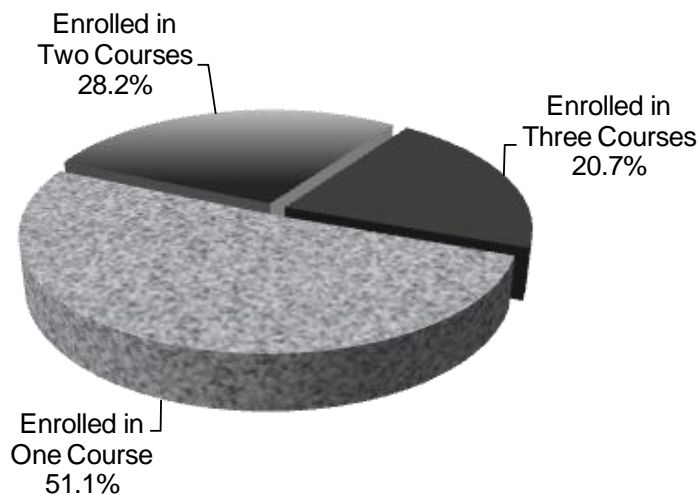


Course Title	Total	Percent
Mathematics		
MATH 0097 – Beginning Algebra	328	51.0%
MATH 0098 – Algebra	147	22.9%
MATH 0099 – Intermediate Algebra	10	1.6%
Total Mathematics	485	75.5%
English		
ENGL 0097 – Basic Composition	208	32.4%
ENGL 0099 – Pre-College Composition	95	14.8%
Total English	303	47.2%
Reading		
READ 0097 – Basic Reading	116	18.1%
READ 0099 – Pre-College Reading	167	26.0%
Total Reading	283	44.1%
English as a Second Language		
ENGL 0090 – ESL LS English	7	1.1%
READ 0090 – ESL LS Reading	11	1.7%
Total ESL	18	2.8%
TOTAL ENROLLMENT OF LS COURSES	1,089	100.0%

Note. Percent is out of the 642 fall 2008 first-time freshmen who enrolled in Learning Support Courses.



Learning Support First-Time Freshmen Enrollment by Learning Support Course



Enrolled in:	Number of Students*	% of Total
One Learning Support course	328	51.1%
Two Learning Support courses	181	28.2%
Three Learning Support courses	133	20.7%
Total	642	100.0%

Enrolled in One LS Course = 328

Course	Students	Course	Students
Algebra	91	ESL Learning Support Reading	4
Basic Composition	25	Intermediate Algebra	7
Basic Reading	6	Pre-College Composition	21
Beginning Algebra	147	Pre-College Reading	25
ESL Learning Support English	2		

Enrolled in Two LS Courses = 181

Course 1	Course 2	Students
Beginning Algebra	Basic Composition	21
	Basic Reading	13
	ESL Learning Support Reading	2
	Pre-College Composition	15
	Pre-College Reading	19
TOTAL		70
Algebra	Basic Composition	9
	Basic Reading	3
	Pre-College Composition	10
	Pre-College Reading	13
TOTAL		35
Intermediate Algebra	Pre-College Reading	1
	Basic Reading	1
TOTAL		2

Note. Data reflects the unduplicated count of first-time freshmen who enrolled in at least one Learning Support course.



Learning Support First-Time Freshmen Enrollment by Learning Support Course

Enrolled in Two LS Courses (Continued)

<i>Course 1</i>	<i>Course 2</i>	<i>Students</i>
Pre-College Composition	Pre-College Reading	20
	Basic Reading	5
<i>TOTAL</i>		25
Basic Composition	Basic Reading	19
	Pre-College Reading	28
<i>TOTAL</i>		47
ESL Learning Support English	Pre-College Reading	1
	ESL Learning Support Reading	1
<i>TOTAL</i>		2

Enrolled in Three LS Courses = 133

<i>Course 1</i>	<i>Course 2</i>	<i>Course 3</i>	<i>Students</i>
Basic Composition	Basic Reading	Beginning Algebra	56
		Algebra	5
	Pre-College Reading	Beginning Algebra	34
		Algebra	10
	ESL Learning Support Reading	Algebra	1
<i>TOTAL</i>			106
Pre-College Composition	Basic Reading	Beginning Algebra	5
		Algebra	2
		Intermediate Algebra	1
	Pre-College Reading	Algebra	3
<i>TOTAL</i>			11
Beginning Algebra	Pre-College Composition	Pre-College Reading	13
	ESL Learning Support Reading	ESL Learning Support English	3
<i>TOTAL</i>			16

Note. Data reflects the unduplicated count of first-time freshmen who enrolled in at least one Learning Support course.



Learning Support First-Time Freshmen by County of Residence

County of Residence	# of Students	% of Total
Georgia Counties	637	99.1%
<i>Atlanta Metropolitan Counties</i>	525	81.7%
<i>Other Georgia Counties</i>	112	17.4%
Out-of-State	5	0.7%
International	1	0.2%
Total	642	100.0%

Atlanta Metropolitan Counties	
Henry	93
Dekalb	68
Fulton	61
Fayette	49
Clayton	47
Spalding	41
Lamar	26
Butts	24
Pike	20
Gwinnett	19
Coweta	14
Cobb	13
Newton	10
Rockdale	9
Douglas	7
Meriwether	6
Walton	6
Bartow	3
Cherokee	2
Forsyth	2
Paulding	2
Barrow	1
Carroll	1
TOTAL	524

Other Georgia Counties			
Bibb	25	Crawford	1
Upson	24	Elbert	1
Monroe	21	Evans	1
Houston	4	Grady	1
Taylor	4	Greene	1
Troup	4	Jeff Davis	1
Chatham	2	Long	1
Clarke	2	Montgomery	1
Hall	2	Morgan	1
Peach	2	Oglethorpe	1
Taliaferro	2	Rabun	1
Wilkinson	2	Richmond	1
Berrien	1	Talbot	1
Bleckley	1	Washington	1
Camden	1		
Columbia	1	TOTAL	112

Out-of-State	
Colorado	1
Florida	1
Massachusetts	1
Ohio	1
Texas	1
TOTAL	5

International	
Peru	1
TOTAL	1

Note. Atlanta Metropolitan Counties consists of 28 counties.



Learning Support First-Time Freshmen Living on Campus by Gender and Ethnicity

	Am. Indian/ Alaskan Native	Asian/ Pacific Islander	Black, Non- Hispanic	Hispanic	Multiracial	White, Non- Hispanic	TOTAL
WOMEN							
Gordon Commons Building A	0	0	35	0	1	2	38
Gordon Commons Building B	0	0	50	0	1	7	58
Gordon Commons Building C	0	0	22	4	1	5	32
Gordon Village	0	0	81	2	3	14	100
Guillebeau Hall	0	0	0	0	0	0	0
Melton Hall	0	0	7	0	0	1	8
Total Women	0	0	195	6	6	29	236
Percent	0.0%	0.0%	82.6%	2.5%	2.5%	12.3%	100.0%

MEN							
Gordon Commons Building A	0	0	23	0	0	3	26
Gordon Commons Building B	0	0	21	0	0	2	23
Gordon Commons Building C	0	0	4	0	0	12	16
Gordon Village	0	1	40	3	0	20	64
Guillebeau Hall	0	0	0	2	0	2	4
Melton Hall	0	0	21	0	2	1	24
Total Men	0	1	109	5	2	40	157
Percent	0.0%	0.6%	69.4%	3.2%	1.3%	25.5%	100.0%

ETHNICITY							
Gordon Commons Building A	0	0	58	0	1	5	64
Gordon Commons Building B	0	0	71	0	1	9	81
Gordon Commons Building C	0	0	26	4	1	17	48
Gordon Village	0	1	121	5	3	34	164
Guillebeau Hall	0	0	0	2	0	2	4
Melton Hall	0	0	28	0	2	2	32
Total	0	1	304	11	8	69	393
Percent	0.0%	0.3%	77.4%	2.8%	2.0%	17.6%	100.0%



Academics





Academic Divisions Degrees Offered

The academic affairs of Gordon College are divided among five academic divisions: Division of Business and Social Science; Division of Teacher Education; Division of Humanities; Division of Mathematics and Natural Sciences, Division of Nursing and Health Sciences. Each Division includes faculty members assigned to teach the courses offered by the Division, and each is supervised by a Division Chair. The academic Divisions of Gordon College and the programs of study offered through them are summarized below.

BUSINESS AND SOCIAL SCIENCE DIVISION

Division Chair – Dr. Alan Burstein

Associate of Arts

History
Political Science
Psychology
Social Work
Sociology

Associate of Science

Business Administration
Criminal Justice
Information Systems

TEACHER EDUCATION DIVISION

Division Chair – Dr. Jerry Stinchcomb

Associate of Arts

Teacher Education

Bachelor of Science

Early Childhood Education

HUMANITIES DIVISION

Division Chair – Dr. Richard Baskin

Associate of Arts

Art
Communication
English
Foreign Language
General Studies
Music
Theater (Drama)

MATHEMATICS AND NATURAL SCIENCES DIVISION

Division Chair – Dr. DeWitt Moore

Associate of Science

Agricultural & Environmental Sciences
Astronomy
Biological Sciences and Biology
Chemistry
Computer Science
Forestry
Mathematics
Physical Science
Physics
Pre-Dental Hygiene
Pre-Medical Technology
Pre-Occupational Therapy
Pre-Pharmacy
Pre-Physical Therapy
Pre-Physician Assistant
Pre-Respiratory Therapy

NURSING AND HEALTH SCIENCES DIVISION

Division Chair – Joan S. Cranford

Associate of Science

Diagnostic Medical Sonography
Health and Physical Education
Health Information Management
Nuclear Medicine Technology
Nursing
Radiologic Technology

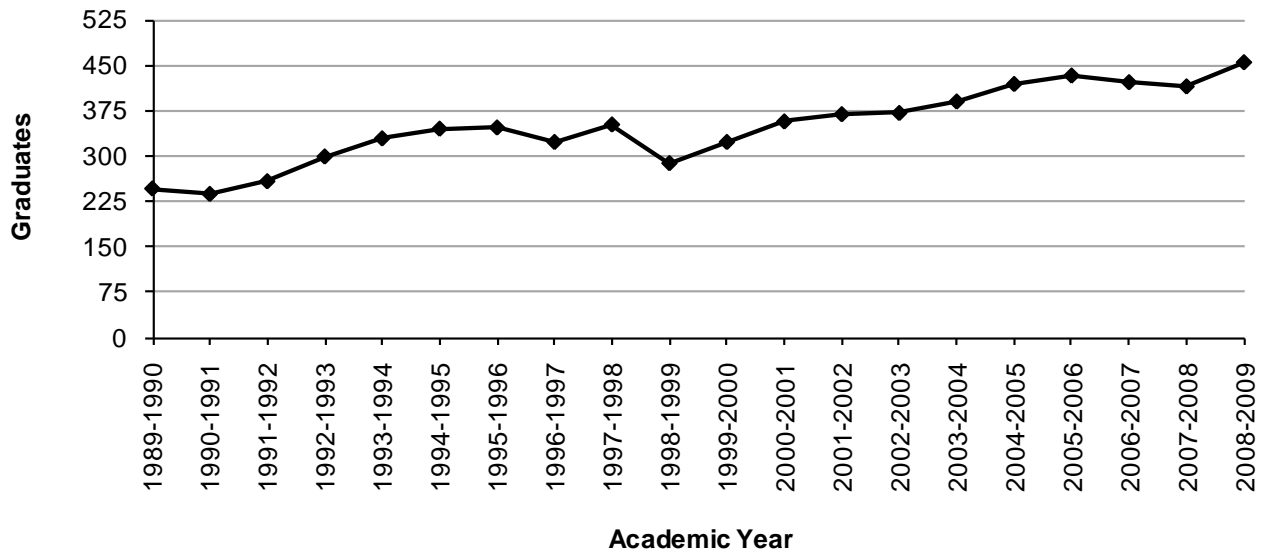
Note. Gordon College 2008-2009 Academic Catalog.

Through the college transfer program, students receiving the degree of Associate of Arts or Associate of Science may transfer their courses to another University System institution, continue their studies for an additional two years, and receive the baccalaureate degree. Additionally, Gordon offers career degrees aimed at preparing the student for direct entry into the workforce.



Degrees Conferred

**Gordon College Graduates
1989-2008**



Degree Conferred	2004-2005	2005-2006	2006-2007	2007-2008	2008-2009
Associate of Applied Science (Cooperative)	1	1	0	0	0
Associate of Arts	182	163	167	168	166
Associate of Science	162	197	174	159	166
Associate of Science in Nursing	72	70	81	88	95
Associate of Applied Science (General Business)	2	2	0	0	0
Bachelor of Science in Early Childhood Education	N/A	N/A	N/A	N/A	28
Total	419	433	422	415	455

Note. The Bachelor of Science in Early Childhood Education program began in 2007 and the first teacher cohort graduated in May 2009.

In 2006, Gordon College was approved by the Board of Regents of the University System of Georgia to expand its undergraduate Associate of Arts education major and offer a new Bachelor of Science in Early Childhood Education. This degree represents the first four-year degree offered under Gordon College's new status as a four-year state college.



Degrees Conferred Fiscal Year 2008-2009

Degrees Conferred by Division & Degree Program

Degree Program	Associate Degrees			Bachelor Degree	Total	% of Total
	Associate of Arts	Associate of Science	Associate of Science Nursing	Bachelor of Science		
Business & Social Science						
Business Administration	0	85	0	0	85	62.5%
Criminal Justice	0	13	0	0	13	9.6%
History	6	0	0	0	6	4.4%
Information Systems	0	2	0	0	2	1.5%
Political Science	7	0	0	0	7	5.1%
Psychology	16	0	0	0	16	11.8%
Social Work	4	0	0	0	4	2.9%
Sociology	3	0	0	0	3	2.2%
Total	36	100	0	0	136	29.9%
Humanities						
Art	9	0	0	0	9	21.4%
English	13	0	0	0	13	31.0%
Foreign Language	3	0	0	0	3	7.1%
General Studies	12	0	0	0	12	28.6%
Theater (Drama)	5	0	0	0	5	11.9%
Total	42	0	0	0	42	9.2%
Mathematics & Natural Sciences						
Biology	0	18	0	0	18	36.0%
Chemistry	0	3	0	0	3	6.0%
Computer Science	0	5	0	0	5	10.0%
Forestry	0	1	0	0	1	2.0%
Physics	0	4	0	0	4	8.0%
Pre-Dental Hygiene	0	7	0	0	7	14.0%
Pre-Medical Technology	0	1	0	0	1	2.0%
Pre-Pharmacy	0	5	0	0	5	10.0%
Pre-Physical Therapy	0	2	0	0	2	4.0%
Pre-Physician Assistant	0	3	0	0	3	6.0%
Pre-Respiratory Therapy	0	1	0	0	1	2.0%
Total	0	50	0	0	50	11.0%



Degrees Conferred Fiscal Year 2008-2009

Degree Conferred by Division & Degree Program – (Continued)

Degree Program	Associate Degrees			Bachelor Degree	Total	% of Total
	Associate of Arts	Associate of Science	Associate of Science Nursing	Bachelor of Science		
Nursing & Health Sciences						
Diagnostic Medical Sonography	0	2	0	0	2	1.8%
Health and Physical Education	0	4	0	0	4	3.6%
Health Information Management	0	4	0	0	4	3.6%
Nuclear Medicine Technology	0	2	0	0	2	1.8%
Nursing	0	0	95	0	95	85.6%
Nursing (transfer)	0	4	0	0	4	3.6%
Total	0	16	95	0	111	24.4%
Teacher Education						
Early Childhood Education	0	0	0	28	28	24.1%
Teacher Education	88	0	0	0	88	75.9%
Total	88	0	0	28	116	25.5%
Total Degrees Conferred	166	166	95	28	455	100.0%
Percent of Degrees Conferred	36.5%	36.5%	20.9%	6.2%	100.0%	



2008 – 2009 Graduates' Demographics

Ethnicity	Age				Total	% of Total
	18	19-23	24-40	Over 40		
WOMEN						
Am. Indian/Alaskan Native	0	0	0	0	0	0.0%
Asian/Pacific Islander	0	0	2	0	2	0.6%
Black, Non-Hispanic	0	38	31	6	75	23.3%
Hispanic	0	4	0	0	4	1.2%
Multiracial	0	0	0	1	1	0.3%
Unreported/Unknown	0	1	1	0	2	0.6%
White, Non-Hispanic	2	132	85	19	238	73.9%
Total Women	2	175	119	26	322	71.7%
MEN						
Am. Indian/Alaskan Native	0	1	0	0	1	0.8%
Asian/Pacific Islander	0	2	0	0	2	1.6%
Black, Non-Hispanic	1	15	10	2	28	22.0%
Hispanic	0	5	0	0	5	3.9%
Multiracial	0	4	1	0	5	3.9%
Unreported/Unknown	0	0	0	0	0	0.0%
White, Non-Hispanic	0	62	23	1	86	67.7%
Total Men	1	89	34	3	127	28.3%
ETHNICITY						
Am. Indian/Alaskan Native	0	1	0	0	1	0.2%
Asian/Pacific Islander	0	2	2	0	4	0.9%
Black, Non-Hispanic	1	53	41	8	103	22.9%
Hispanic	0	9	0	0	9	2.0%
Multiracial	0	4	1	1	6	1.3%
Unreported/Unknown	0	1	1	0	2	0.4%
White, Non-Hispanic	2	194	108	20	324	72.2%
Total	3	264	153	29	449	100.0%
Percent of Total	0.7%	58.8%	34.1%	6.5%	100.0%	

Note. The number of graduates is less than the number of degrees conferred because a few students received more than one degree.



2008 – 2009 Graduates' Demographics by Division

Age Group

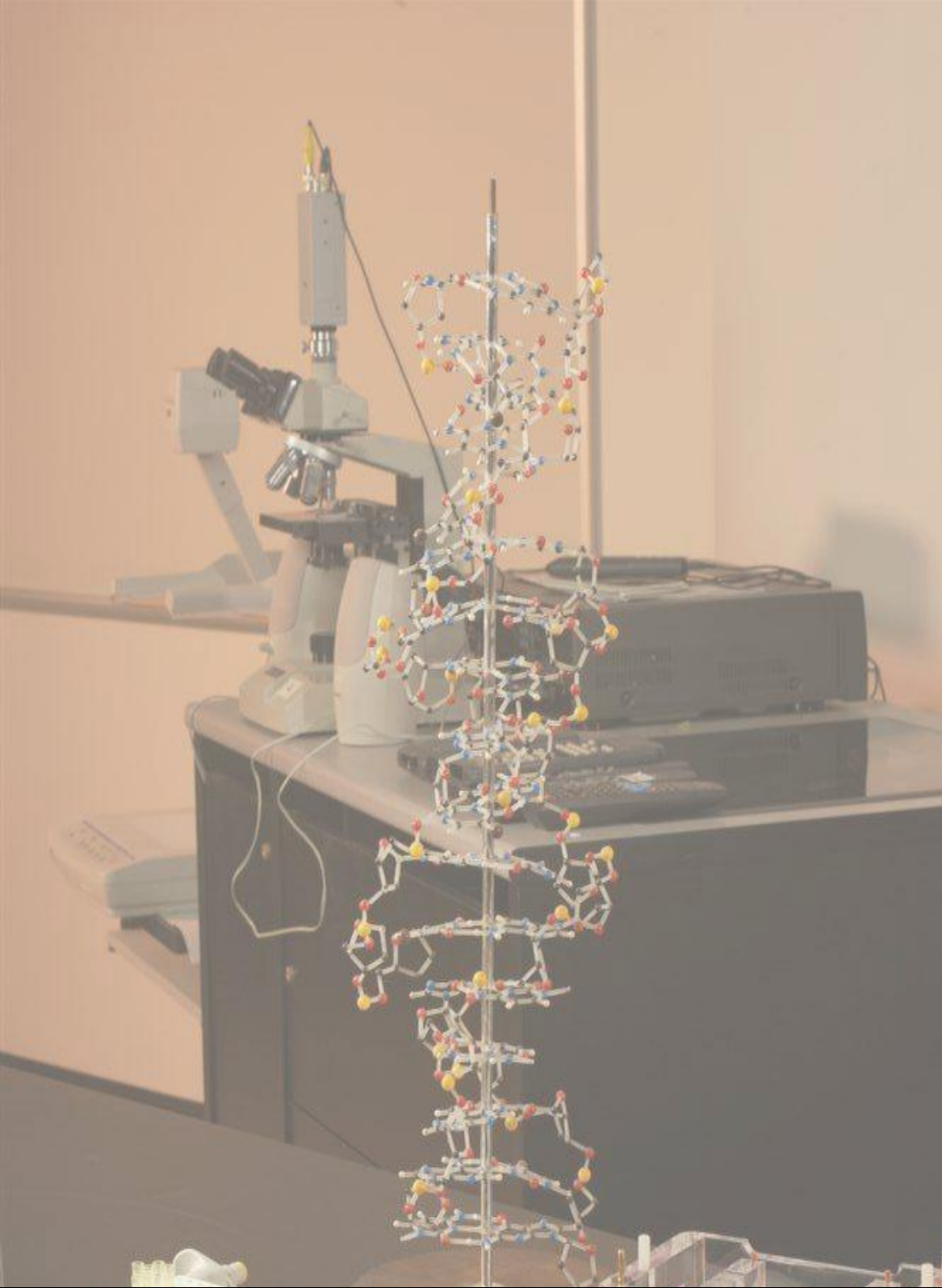
	18		19-23		24-40		Over 40		Total All		
	Women	Men	Women	Men	Women	Men	Women	Men	Women	Men	Total
Business & Social Science											
Am. Indian/Alaskan Native	0	0	0	0	0	0	0	0	0	0	0
Asian/Pacific Islander	0	0	0	1	0	0	0	0	0	1	1
Black, Non-Hispanic	0	0	16	9	5	6	0	0	21	15	36
Hispanic	0	0	1	3	0	0	0	0	1	3	4
Multiracial	0	0	0	2	0	0	0	0	0	2	2
Unreported	0	0	1	0	0	0	0	0	1	0	1
White, Non-Hispanic	2	0	29	39	8	12	2	0	41	51	92
Gender Total	2	0	47	54	13	18	2	0	64	72	136
Age Total	2		101		31		2		136		
Humanities											
Am. Indian/Alaskan Native	0	0	0	0	0	0	0	0	0	0	0
Asian/Pacific Islander	0	0	0	0	0	0	0	0	0	0	0
Black, Non-Hispanic	0	0	2	2	1	0	0	1	3	3	6
Hispanic	0	0	1	0	0	0	0	0	1	0	1
Multiracial	0	0	0	0	0	0	0	0	0	0	0
Unreported	0	0	0	0	0	0	0	0	0	0	0
White, Non-Hispanic	0	0	19	7	4	4	1	0	24	11	35
Gender Total	0	0	22	9	5	4	1	1	28	14	42
Age Total	0		31		9		2		42		
Mathematics & Natural Sciences											
Am. Indian/Alaskan Native	0	0	0	0	0	0	0	0	0	0	0
Asian/Pacific Islander	0	0	0	1	0	0	0	0	0	1	1
Black, Non-Hispanic	0	1	8	2	1	0	0	0	9	3	12
Hispanic	0	0	0	2	0	0	0	0	0	2	2
Multiracial	0	0	0	1	0	1	0	0	0	2	2
Unreported	0	0	0	0	1	0	0	0	1	0	1
White, Non-Hispanic	0	0	16	7	5	4	0	0	21	11	32
Gender Total	0	1	24	13	7	5	0	0	31	19	50
Age Total	1		37		12		0		50		



2008 – 2009 Graduates' Demographics By Division

Age Group

	18		19-23		24-40		Over 40		Total All		
	Women	Men	Women	Men	Women	Men	Women	Men	Women	Men	Total
Nursing & Health Sciences											
Am. Indian/Alaskan Native	0	0	0	0	0	0	0	0	0	0	0
Asian/Pacific Islander	0	0	0	0	2	0	0	0	2	0	2
Black, Non-Hispanic	0	0	5	2	20	4	6	1	31	7	38
Hispanic	0	0	1	0	0	0	0	0	1	0	1
Multiracial	0	0	0	0	0	0	1	0	1	0	1
Unreported	0	0	0	0	0	0	0	0	0	0	0
White, Non-Hispanic	0	0	15	2	40	2	10	0	65	4	69
Gender Total	0	0	21	4	62	6	17	1	100	11	111
Age Total	0		25		68		18		111		
Teacher Education											
Am. Indian/Alaskan Native	0	0	0	1	0	0	0	0	0	1	1
Asian/Pacific Islander	0	0	0	0	0	0	0	0	0	0	0
Black, Non-Hispanic	0	0	10	0	4	0	0	0	14	0	14
Hispanic	0	0	1	0	0	0	0	0	1	0	1
Multiracial	0	0	0	1	0	0	0	0	0	1	1
Unreported	0	0	0	0	0	0	0	0	0	0	0
White, Non-Hispanic	0	0	55	8	28	1	6	1	89	10	99
Gender Total	0	0	66	10	32	1	6	1	104	12	116
Age Total	0		76		33		7		116		
Institution Total											
Am. Indian/Alaskan Native	0	0	0	1	0	0	0	0	0	1	1
Asian/Pacific Islander	0	0	0	2	2	0	0	0	2	2	4
Black, Non-Hispanic	0	1	41	15	31	10	6	2	78	28	106
Hispanic	0	0	4	5	0	0	0	0	4	5	9
Multiracial	0	0	0	4	0	1	1	0	1	5	6
Unreported	0	0	1	0	1	0	0	0	2	0	2
White, Non-Hispanic	2	0	134	63	85	23	19	1	240	87	327
Gender Total	2	1	180	90	119	34	26	3	327	128	455
Age Total	3		270		153		29		455		



Faculty and Staff





Faculty and Staff Fall 2008

Occupational Function

	Full-time	Part-time	Total	% of Total
Primarily instruction	0	83	83	22.0%
Instruction/research/public service	102	0	102	27.0%
Primarily research	0	0	0	0.0%
Primarily public service, and Contracts	0	0	0	0.0%
Executive/administrative/managerial	28	0	28	7.4%
Other professional (support/service)	33	20	53	14.0%
Graduate assistants	0	0	0	0.0%
Technical and paraprofessionals	8	0	8	2.1%
Clerical and secretarial	39	5	44	11.6%
Skilled crafts	2	0	2	0.5%
Service/maintenance	41	17	58	15.3%

Gender

	Full-time	Part-time	Total	% of Total
Women	147	75	222	58.7%
Men	106	50	156	41.3%

Ethnicity

	Full-time	Part-time	Total	% of Total
Black, Non-Hispanic	53	20	73	19.3%
Am. Indian/Alaska Native	0	0	0	0.0%
Asian/Pacific Islander	7	0	7	1.9%
Hispanic	1	0	1	0.3%
White, Non-Hispanic	192	102	294	77.8%
Race and ethnicity unknown	0	3	3	0.8%

Total Faculty and Staff

Percent

253	125	378
66.9%	33.1%	100.0%



Faculty Fall 2008

FULL-TIME FACULTY

Ethnicity and Academic Rank

Ethnicity	Professor	Associate Professor	Assistant Professor	Instructor	Total
Black, Non-Hispanic	2	1	6	1	10
Am. Indian/Alaska Native	0	0	0	0	0
Asian/Pacific Islander	1	3	3	0	7
Hispanic	0	0	0	0	0
Race and ethnicity unknown	0	0	0	0	0
White, Non-Hispanic	17	30	28	10	85
Total	20	34	37	11	102

Gender and Academic Rank

Gender	Professor	Associate Professor	Assistant Professor	Instructor	Total
Women	6	15	23	8	52
Men	14	19	14	3	50
Total	20	34	37	11	102

Tenure Status

Status	Professor		Associate Professor		Assistant Professor		Instructor		Total of Gender		Total of Status
	Women	Men	Women	Men	Women	Men	Women	Men	Women	Men	
Tenured	5	14	13	13	0	0	0	0	18	27	45
On Tenure Track	0	0	0	4	15	12	0	0	15	16	31
Not on Tenure Track	1	0	2	2	8	2	8	3	19	7	26
Totals	6	14	15	19	23	14	8	3	52	50	102
	20		34		71		11		102		

Full-Time Faculty

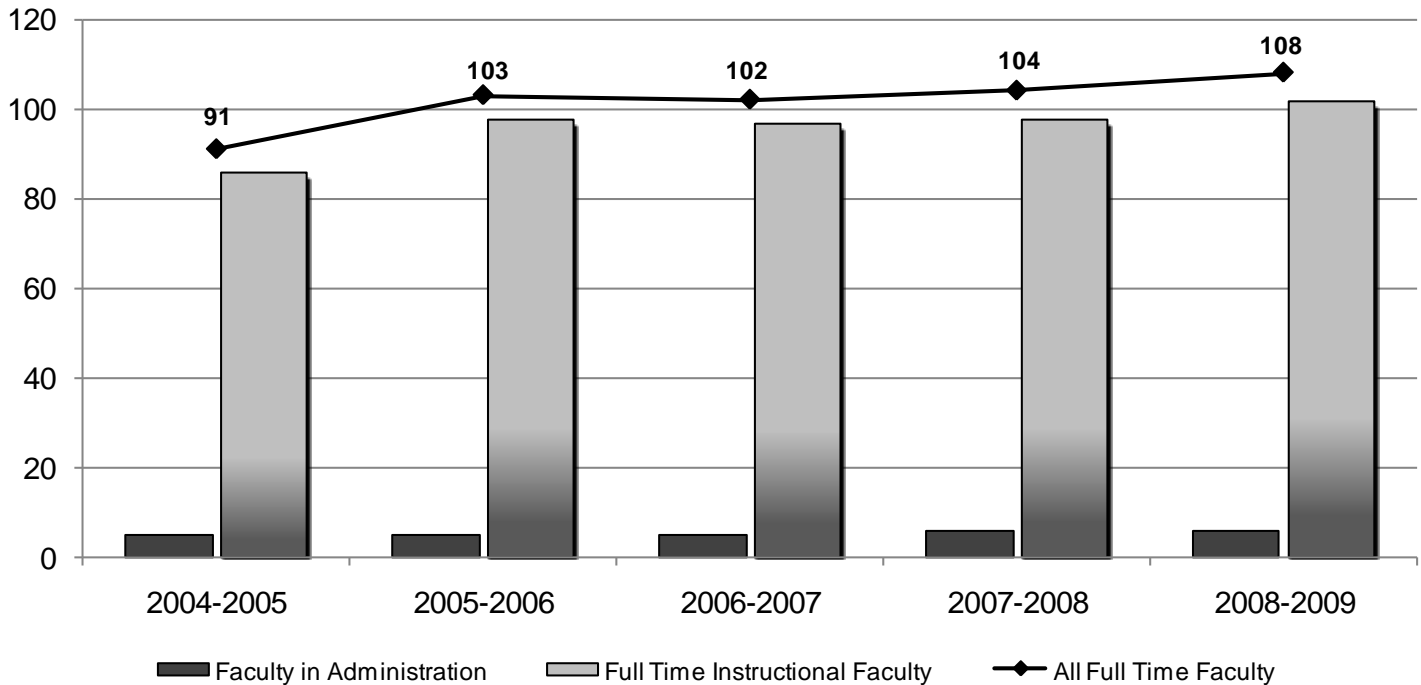
Part-time Faculty

Ethnicity	Full-Time Faculty			Part-time Faculty		
	Women	Men	Total	Women	Men	Total
Black, Non-Hispanic	7	3	10	8	2	10
Am. Indian/Alaska Native	0	0	0	0	0	0
Asian/Pacific Islander	3	4	7	0	0	0
Hispanic	0	0	0	0	0	0
White, Non-Hispanic	42	43	85	41	30	71
Race/ethnicity unknown	0	0	0	1	1	2
Total	52	50	102	50	33	83

Note. Data reported in 2008-2009 IPEDS.



Full-Time Faculty Fall 2004 – Fall 2008



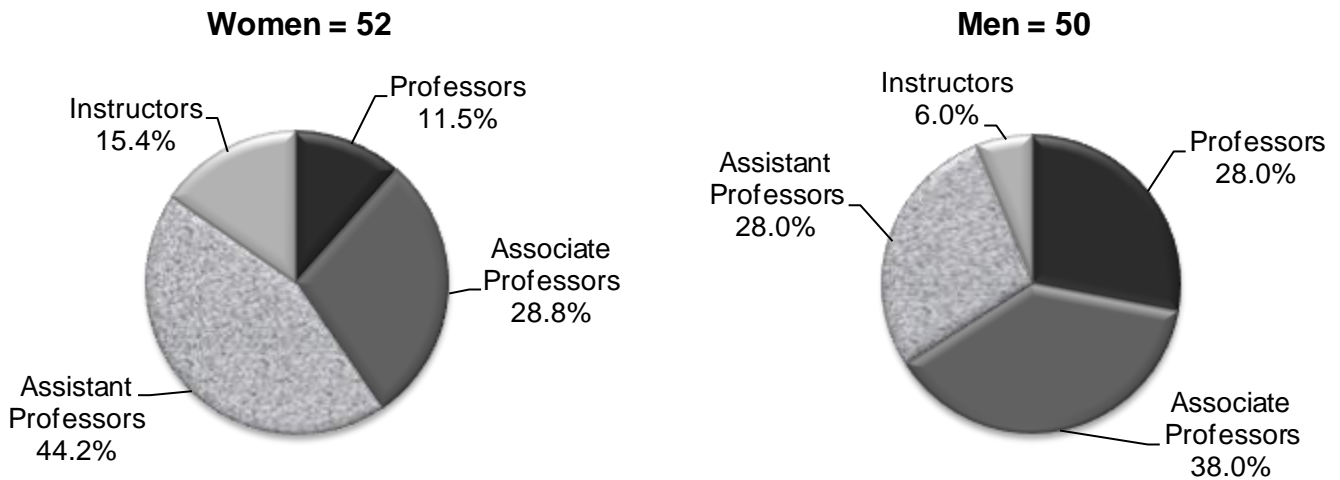
Academic Year	2004-2005	2005-2006	2006-2007	2007-2008	2008-2009
All Full-Time Faculty	91	103	102	104	108
Faculty Status in Administration	5	5	5	6	6
Full-Time Instructional Faculty	86	98	97	98	102

Note. Data reported in 2008-2009 IPEDS.

Full-time professors, associate professors, assistant professors, and instructors comprise the faculty. The data includes faculty who are tenured, on tenure track, or in positions that are not tenure track but are employed on at least an academic year contract. Faculty in administration consists of each division chair and the dean of academic affairs.



Full-Time Faculty by Gender and Rank



	Tenured	On Tenure Track	Not on Tenure Track	Total	% Total
WOMEN					
Professors	5	0	1	6	11.5%
Associate Professors	13	0	2	15	28.8%
Assistant Professors	0	15	8	23	44.2%
Instructors	0	0	8	8	15.4%
Total Women	18	15	19	52	51.0%
% of Women	34.6%	28.8%	36.5%		

MEN					
Professors	14	0	0	14	28.0%
Associate Professors	13	4	2	19	38.0%
Assistant Professors	0	12	2	14	28.0%
Instructors	0	0	3	3	6.0%
Total Men	27	16	7	50	49.0%
% of Men	54.0%	32.0%	14.0%		

ACADEMIC RANK					
Professors	19	0	1	20	19.6%
Associate Professors	26	4	4	34	33.3%
Assistant Professors	0	27	10	37	36.3%
Instructors	0	0	11	11	10.8%
Total	45	31	26	102	100.0%
% of Total	44.1%	30.4%	25.5%	100.0%	

Note. Data reported in 2008-2009 IPEDS.



Full-Time Faculty by Discipline and Academic Rank

	Professor	Associate Professor	Assistant Professor	Instructor	Total
Business & Social Science					
Accounting	0	1	0	0	1
Business	1	0	1	0	2
Economics	0	2	0	0	2
History	3	2	2	1	8
Political Science	0	2	0	0	2
Psychology	1	2	3	0	6
Sociology	0	1	1	0	2
Total	5	10	7	1	23
Humanities					
Art	2	0	0	0	2
Communication	0	0	0	1	1
English	4	3	4	1	12
Learning Support English	0	2	1	0	3
Learning Support Reading/English	0	0	2	0	2
Music	0	0	2	0	2
Reading	0	0	1	0	1
Spanish	0	2	0	0	2
Speech	0	1	0	0	1
Theater	0	0	1	1	2
Total	6	8	11	3	28
Mathematics & Natural Sciences					
Biology	2	3	4	0	9
Chemistry	2	1	1	0	4
Computer Science	0	1	0	0	1
Learning Support Mathematics	1	1	1	3	6
Mathematics	3	2	0	2	7
Physics	0	1	0	0	1
Total	8	9	6	5	28
Nursing & Health Sciences					
Nursing	1	3	10	2	16
Physical Education	0	2	2	0	4
Total	1	5	12	2	20
Teacher Education					
Instructional Technology	0	1	0	0	1
Teacher Education	0	1	1	0	2
Total	0	2	1	0	3
Total Full-Time Faculty	20	34	37	11	102
Percent	19.6%	33.3%	36.3%	10.8%	



Full-Time Employees

Instructional personnel are those persons whose primary assignments are instruction.

Executive/Administrative/Managerial are those whose primary responsibility is management of the institution. Other professionals (support/service) are those whose primary purpose is performing academic support, student service, and institutional support.

Technical/Paraprofessionals include persons with technical skills such as computer programmers. Clerical/Secretarial include secretaries, bookkeepers, sales clerks, and data entry clerks. Skilled Crafts include persons with special manual skills, and Service/Maintenance include persons with service or maintenance skills.

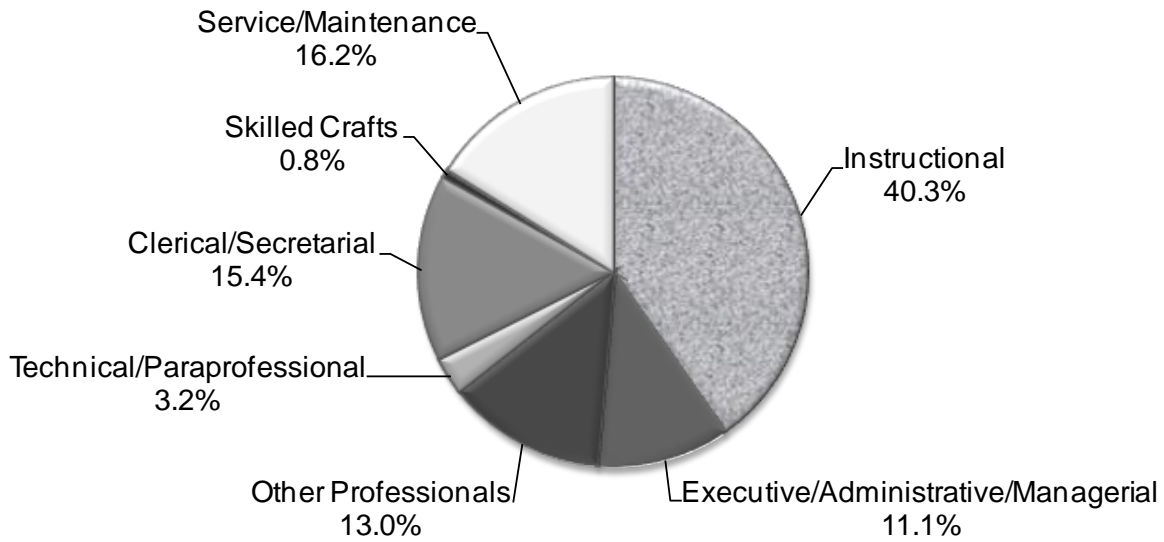
GENDER and ETHNICITY

	<u>Instructional</u>	<u>Executive/ Administrative/ Managerial</u>	<u>Other professionals (support/service)</u>	<u>Technical/ Paraprofessionals</u>	<u>Clerical and Secretarial</u>	<u>Skilled Crafts</u>	<u>Service/ Maintenance</u>	<u>Total</u>
MEN								
Black, Non-Hispanic	3	1	1	1	1	0	15	22
Am. Indian/Alaskan Native	0	0	0	0	0	0	0	0
Asian/Pacific Islander	4	0	0	0	0	0	0	4
Hispanic	0	0	0	0	0	0	0	0
White, Non-Hispanic	43	15	8	2	1	2	9	80
Total	50	16	9	3	2	2	24	106
WOMEN								
Black, Non-Hispanic	7	3	6	0	4	0	11	31
Am. Indian/Alaskan Native	0	0	0	0	0	0	0	0
Asian/Pacific Islander	3	0	0	0	0	0	0	3
Hispanic	0	0	0	0	1	0	0	1
White, Non-Hispanic	42	9	18	5	32	0	6	112
Total	52	12	24	5	37	0	17	147
TOTAL ETHNICITY								
Black, Non-Hispanic	10	4	7	1	5	0	26	53
Am. Indian/Alaska Native	0	0	0	0	0	0	0	0
Asian/Pacific Islander	7	0	0	0	0	0	0	7
Hispanic	0	0	0	0	1	0	0	1
White, Non-Hispanic	85	24	26	7	33	2	15	192
Total	102	28	33	8	39	2	41	253

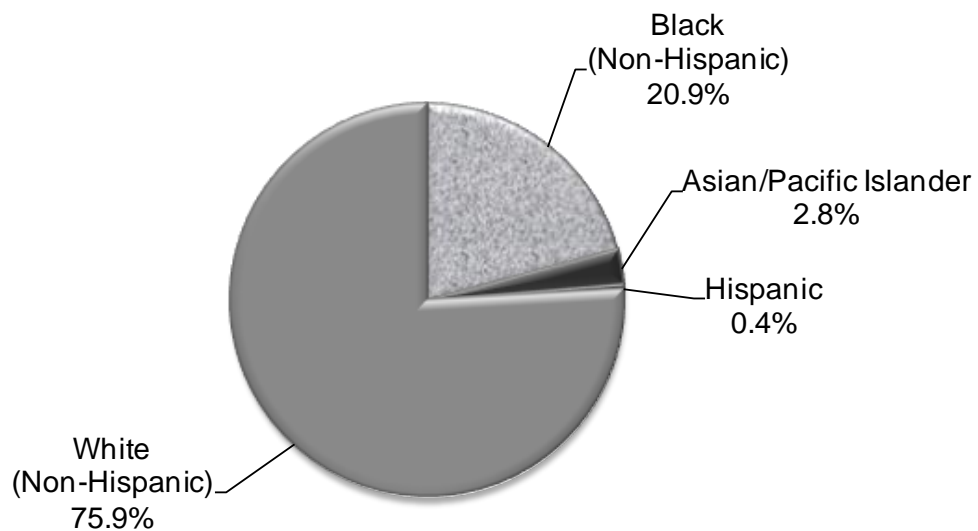


Occupational Class and Ethnicity of Full-Time Employees

Occupational Class



Ethnicity





Gordon College Faculty Fall 2008

Faculty Member	Rank/Title	Degrees
Marlin C. Adams	Professor of Art	B.A., M.F.A., Brigham Young University
Thomas A. Aiello	Assistant Professor of History	B.A., Colorado State University M.A., Ph.D., University of Texas at Arlington
Nancy Anderson	Head Librarian and Professor of Library Science	B.S., Brenau University M.Ed., University of Georgia
John P. Barnard	Associate Professor of Instructional Technology	B.S., Regents College M.Ed., Ph.D., Arizona State University
Richard L. Baskin	Chair – Division of Humanities Associate Professor of English	B.A., M.A., University of North Texas Ph.D., University of Tennessee, Knoxville
Kris A. Beck	Assistant Professor of Political Science	B.A., University of Chicago M.A., Ph.D., University of Iowa
Pamela T. Bell	Assistant Professor of Learning Support Reading and English	B.A., M.Ed., Georgia College and State University Ed.S., Ed.D., Argosy University, Sarasota
Teresa Ann Betkowski	Professor of Learning Support Mathematics	B.A., Jersey City State College M.Ed., William Paterson College
Rovina T. Billingslea	Assistant Professor of Nursing	B.S., Wright State University M.S.N., University of South Alabama
Samantha H. Bishop	Assistant Professor of Nursing	B.S.N., M.S.N., Medical College of Georgia
Sandra H. Blythe	Assistant Professor of Learning Support Reading and English	B.S., Georgia College M.A., Hood College
Peter Boltz	Associate Professor of Speech	B.A., M.A., University of South Carolina Ph.D., University of Utah
Michael W. Borders	Associate Professor of Education	B.S.Ed., Georgia Southern University M.Ed., Ed.S., Georgia State University Ed.D., Nova University
Neil M. Boumpani	Assistant Professor of Music	B.A., M.A., The College of New Jersey Ph.D., University of North Carolina, Greensboro
Mark A. Brinkman	Assistant Professor of Biology	B.S., Sioux Falls College M.S., Ph.D., South Dakota State University
Darren K. Broome	Associate Professor of Spanish	B.B.A., University of Georgia M.A., Florida State University Ph.D., University of Alabama
Theresa K. Buchanan	Assistant Professor of Nursing	B.S.N., M.S.N., Medical College of Georgia
Alan N. Burstein	Chair – Division of Business and Social Science Associate Professor of Business	B.A., Yale University M.B.A., University of Chicago Ph.D., University of Pennsylvania
Donald C. Butts	Professor of History	A.B., Davidson College M.A., Ph.D., Duke University



Gordon College Faculty Fall 2008

Faculty Member	Rank/Title	Degrees
Susan W. Byars	Assistant Professor of Learning Support Mathematics	A.B., Tift College M.Ed., Georgia Southern College Ed.S., West Georgia College
Rictor (Ric) L. Calhoun	Professor of Business	B.A., M.B.A., Ed.D., University of Georgia
Debra A. Conaway	Assistant Professor of Nursing	B.S.N. Edinboro University M.A., Rider University M.S.N., University of Alabama-Huntsville
Gary P. Cox	Professor of History	A.B.J., University of Georgia M.S., Ph.D., University of Virginia
Joan S. Cranford	Chair of the Division of Nursing and Health Sciences Associate Professor of Nursing	B.S.N., M.S.N., University of Alabama at Birmingham
Chad L. Davies	Associate Professor of Physics	B.S., Southern Oregon State College Ph.D., University of Florida
R. Douglas Davis	Associate Professor of English	B.A., Colgate University M.A., Temple University Ph.D., Carnegie Mellon University
Kathy E. Davis	Associate Professor of Nursing	B.S.N., Clayton College and State University M.S.N., Kennesaw State University
Donnette L. Dennis-Austin	Instructor of Communication	B.S., M.A., New York University
Mustapha A. Durojaiye	Assistant Professor of Biology	B.A., The Catholic University of America M.S., Ph.D., Clark Atlanta University
Beverly Eskridge	Circulation and Audio Visual Librarian Associate Professor of Library Science	B.S., M.S.L.S., University of Tennessee
Maria Cristina Fermin-Ennis	Associate Professor of Chemistry	B.S., Ateneo De Manila University Ph.D., Wesleyan University
Allen G. Fuller	Professor of Mathematics	B.S., M.S., Ph.D., Emory University
Allan A. Gahr	Professor of Chemistry	B.S., SUNY Oneonta, M.A., SUNY Plattsburg M.S., University of Southern California Ph.D., Clarkson University.
G. Thomas Gaines, Jr.	Instructor of Mathematics	B.M.E., Georgia Institute of Technology M.S., Georgia State University
Susan G. Glenn	Associate Professor of Computer Science	B.F.A., University of Georgia M.S., Southern Polytechnic University Ph.D., University of Georgia
Karen A. Guffey	Associate Professor of Spanish	B.A., Bob Jones University M.A., University of Georgia Ph.D., University of Kentucky.



Gordon College Faculty Fall 2008

Faculty Member	Rank/Title	Degrees
Sarah M. Handwerker	Assistant Professor of Nursing	B.S.N., M.S.N., Georgia College and State University
Gregory D. Hartman	Associate Professor of Biology	B.S., M.S., University of Cincinnati Ph.D., University of New Mexico
Allyson C. Hattermann	Assistant Professor Physical Education	B.S., Eureka College M.S., The University of Mississippi
Ashley W. Helvig	Assistant Professor of Nursing	B.S.N., Medical College of Georgia M.S.N., University of West Georgia
Susan K. Hendricks	Associate Professor of Learning Support English	B.A., M.Ed., Columbus College
Anna D. Higgins	Professor of English	B.A., University of North Carolina at Greensboro M.A., Appalachian State University Ph.D., University of Tennessee.
Peter J. Higgins	Instructor of English	B.A., M.A., Memphis State University
Matthew S. Hill	Assistant Professor of History	B.S., University of South Carolina M.A., Ph.D., Georgia State University
Holly N. Hollis-Williams	Assistant Professor of Nursing,	B.S.N., M.S.N., Georgia College and State University
Jason G. Horn	Professor of English	B.A., Fort Lewis College Ph.D. University of Colorado
Linda L. Hyde	Professor of Biology	B.A., University of Delaware Ph.D., North Carolina State University
Annette J. Jackson	Assistant Professor of Nursing	B.S.N., Georgia Baptist College of Nursing at Mercer University M.S.N., University of Phoenix.
David A. Janssen	Associate Professor of English	B.A., M.A., Portland State University Ph.D., University of Georgia
Joscelyn A. Jarrett	Professor of Mathematics	B.A., Fourah Bay College M.S., University of Toronto Ph.D., University of Iowa
Phillip Y.P. Jen	Assistant Professor of Biology	B.A., B.S., University of North Carolina, Charlotte M.A., Ph.D., Chinese University of Hong Kong
Bieke Jia	Assistant Professor of Chemistry	B.S., Beijing Normal University M.A., Ph.D., Rice University
Brenda E. Johnson	Assistant Professor of Business	B.A., M.S., Mercer University Ph.D., Regent University
Rebecca C. Jones	Assistant Professor of Education	B.S.Ed., University of Georgia M.Ed., Ed.S., University of West Georgia Ed.D., University of Georgia
Prathibha V. Joshi	Associate Professor of Economics	B.A., M.A., University of Bombay, India M.A., University of Akron Ph.D., Middle Tennessee State University



Gordon College Faculty Fall 2008

Faculty Member	Rank/Title	Degrees
Satyajit Karmakar	Professor of Mathematics	B.S., University of Burdwan, India M.S., Bhagalpur University, India M.S., University of Colorado Ph.D., University of Wisconsin
Barry L. Kicklighter	Associate Professor of Psychology	B.A., Harding University M.A., Northeast Louisiana University Ph.D., University of Louisiana
Mark D. King	Assistant Professor of English	B.S., Towson University M.A., DePaul University Ph.D., Louisiana State University
C. Jeffery Knighton	Assistant Professor of Psychology	B.S., M.S., Georgia Southwestern State University Ph.D., Auburn University
Cathy Lee	Assistant Professor of Biology	B.S., Korea University M.S., Ph.D., University of Tennessee
Gary B. Lewellen	Associate Professor of Mathematics	B.A., M.A., Georgia State University Ph.D., Georgia Institute of Technology
Denise Lowery	Assistant Professor of Learning Support English	B.A., Mercer University M.Ed., Regent University
Joseph A. Mayo	Professor of Psychology	B.A., Bloomsburg University M.A., Ed.D., West Virginia University
Karen B. McCarron	Associate Professor of Accounting	B.B.A., The College of William and Mary M.A., Ph.D., The University of Alabama
Travis J. McClanahan	Assistant Professor of Physical Education	B.S., M.A., Tennessee Technological University
Michelle J. McCormick	Associate Professor of Sociology	B.A., M.A., California State University, Northridge M.A., Ph.D., University of California, Los Angeles
Mark C. Milewicz	Associate Professor of Political Science	B.A., Jacksonville State University M.A., Ph.D., University of Alabama
N. DeWitt Moore, Jr.	Chair – Division of Mathematics and Natural Sciences Professor of Mathematics	B.S.Ed., M.Ed., Georgia Southern College Ed.D., University of Georgia
Masoud Nourizadeh	Professor of Art	B.F.A., M.A., Arkansas State University M.F.A., University of Mississippi Ph.D., Ohio University
Gail Pat Parsons	Associate Professor of History	B.A., M.A., University of Missouri Ph.D., University of California, San Francisco
Laura B. Patton	Professor of Nursing	B.S.N., Florida A&M University M.N. Emory University
Anthony M. Pearson	Assistant Professor of Theater	B.A., Mercer University M.F.A., University of Georgia



Gordon College Faculty Fall 2008

Faculty Member	Rank/Title	Degrees
Caesar Perkowski	Assistant Professor of English	B.A., Brigham Young University M.A., Ph.D., University of Gdansk
Michele D. Perry-Stewart	Associate Professor of Learning Support English	B.A., M.A., Albany State University
Alan P. Peterson	Associate Professor of Physical Education	B.S., Miami University M.A., Eastern Kentucky University Ed.D., Oklahoma State University
Stephen R. Powers	Assistant Professor of English	B.A., University of Wisconsin, Oshkosh M.A., Ph.D., University of Wisconsin, Milwaukee
John E. (Jack) Prue	Assistant Professor of Nursing	B.S., M.A., Eastern Michigan University M.S.N., Ed.S., Georgia College and State University
Carol Anne Purvis	Associate Professor of Nursing	B.S.N., Incarnate Word College M.Ed., Boston University M.S.N., University of Texas Health Science Center
Beth Pye	Reference Librarian Associate Professor of Library Science	B.A., University of Georgia M.L.N., Emory University
Stephen A. Raynie	Associate Professor of English	B.A., University of Illinois M.A., University of Missouri Ph.D., Louisiana State University
Jeremy M. Richards	Assistant Professor of History	B.A., North Georgia College and State University M.A., University of West Georgia Ph.D., University of South Carolina
Gina K. Rodgers	Assistant Professor of Nursing	B.S.N., Texas Woman's University M.S.N., University of West Georgia
Alcena M.D. Rogan	Assistant Professor of English	B.A., Sarah Lawrence College M.A., Ph.D., Louisiana State University
Jeffery J. Rogers	Associate Professor of History	B.A., University of Georgia M.A., Ph.D., University of South Carolina
Jacqueline H. Ruff	Associate Professor of Learning Support Mathematics	B.S.Ed., University of Georgia M.Ed., Columbus College
Lynn L. Rumfelt	Assistant Professor of Biology	B.S., Florida International University Ph.D., University of Miami
Brenda J. Rutherford	Serials/ILL/Reference Librarian Assistant Professor of Library Science	B.A., Auburn University M.L.M., Georgia State University M. Div., Southern Baptist Theological Seminary
Evelyn M. Schliecker	Assistant Professor of Psychology	B.A., M.A., Ph.D., Concordia University
Richard W. Schmude, Jr.	Professor of Chemistry	B.A., M.S., Ph.D., Texas A&M University



Gordon College Faculty Fall 2008

Faculty Member	Rank/Title	Degrees
Gwendolyn H. Sharpe	Instructor of Learning Support Mathematics	B.A., Tift College M.Ed., Ed.S., Columbus State College
Amy D. Skinner	Assistant Professor of Psychology	B.A., M.A., Ed.D., University of Alabama
Lynnette S. Smyth	Associate Professor of Economics	B.A., University of Tennessee M.A., University of Missouri M.A., Ph.D., Rutgers University
Theresa R. Stanley	Professor of Biology	B.S., University of California M.S., Ph.D., University of Illinois
Jerry Stinchcomb	Chair – Division of Education Assistant Professor of Education	A.B., M.Ed., West Georgia College Ed.D., University of Georgia
Daniel L. Swetman	Associate Professor of Mathematics	B.S., University of Illinois, Chicago M.S., Ed.D., East Texas State University
Veronica D. Taylor	Assistant Professor of Nursing	B.S.N., Clayton College and State University M.S.N., University of Phoenix
Pamela M. Terry	Associate Professor of Psychology	A.B., M.S., Ph.D., University of Georgia
E. Marvin Thomas	Professor of History	B.A., Auburn University M.A., University of Georgia Ph.D., Auburn University
Richard C. Tsou	Associate Professor of Biology	B.S., Tunghai University M.S., Ph.D., University of Tennessee
James A. Wallace	Assistant Professor of Music	B.S., Case Western Reserve University M.M., Westminster Choir College D.M.A., University of Cincinnati
Elizabeth R. Watts Warren	Assistant Professor of Sociology	B.S., Ball State University M.Ed., M.A., Ph.D., University of Georgia
Marchell (Mickie) R. Weldon	Assistant Professor of Learning Support Mathematics	B.A., Florida State University M.Ed., West Georgia College
J. Jeffery White	Associate Professor of Physical Education	B.S., Southwest Missouri State University M.Ed., Georgia College and State University
Edward J. Whitelock	Professor of English	B.A., M.A., Millersville University Ph.D., Indiana University of PA
Rhonda V. Wilcox	Professor of English	B.A., University of North Carolina at Greensboro M.A., Ph.D., Duke University
Rhonda Wooley	Instructor of Theater	B.S., M.F.A., University of Alabama
Ann. R. Wright	Assistant Professor of Reading	B.A., Tift College M.Ed., Ed.S., West Georgia College
Marguerite E. Wright	Associate Professor of Nursing	B.S.N., Rutgers University M.S.N., Boston College



Gordon College Faculty Fall 2008

Faculty Member	Rank/Title	Degrees
Marwan Zabdawi	Associate Professor of Mathematics	B.S., M.S., Michigan State University M.S., Ph.D., The University of Toledo

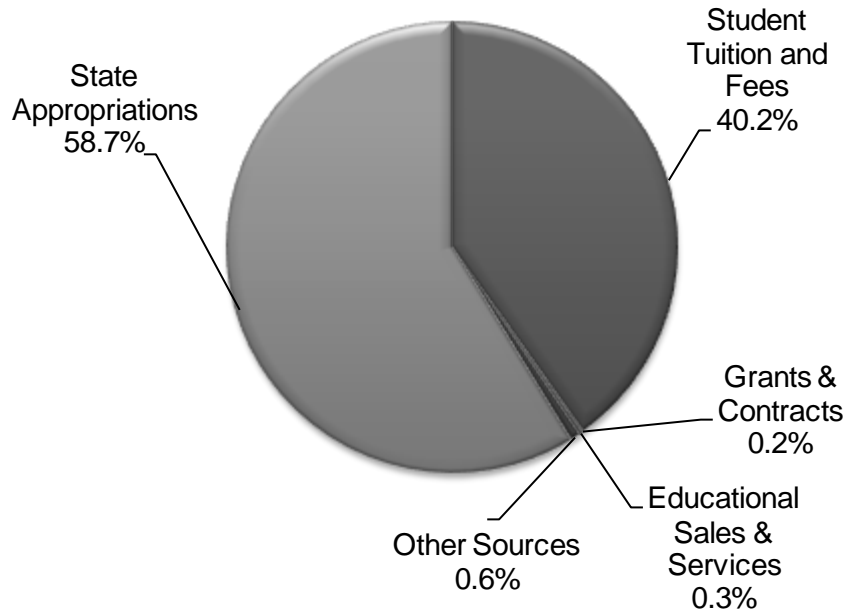
Note. Gordon College 2008-2009 Academic Catalog.



Financial Information



Educational and General Revenues



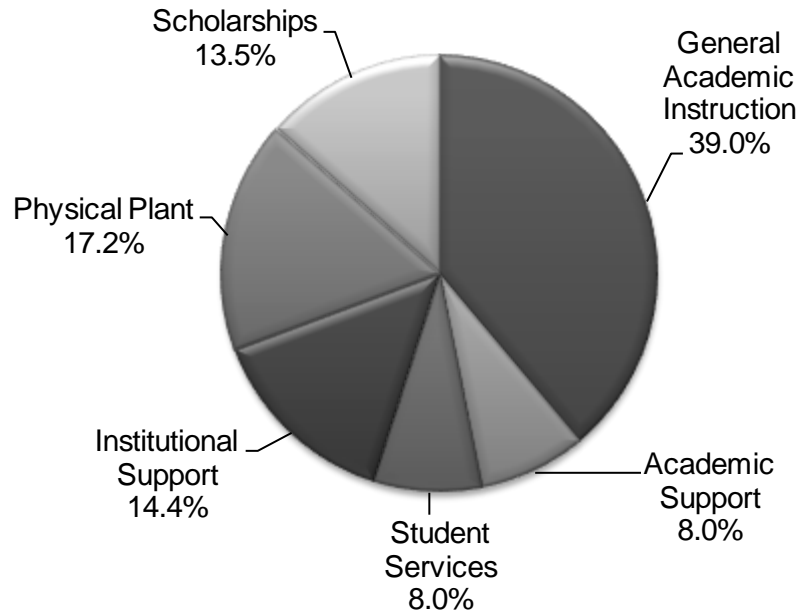
Distribution of Educational and General Revenues by Source

<i>Source of Funds</i>	Fiscal Year 2008-2009	% of Total
Internal Revenue		
Student Tuition and Fees	\$8,120,356	40.2%
Grants & Contracts	\$30,682	0.2%
Educational Sales & Services	\$53,804	0.3%
Other Sources	\$130,391	0.6%
Sub-Total Internal Revenue	\$8,335,233	41.3%
State Appropriations	\$11,869,449	58.7%
Total Educational & General Revenues	\$20,204,682	100.0%

Note. Gordon College Finance and Administration.



Educational and General Expenditures



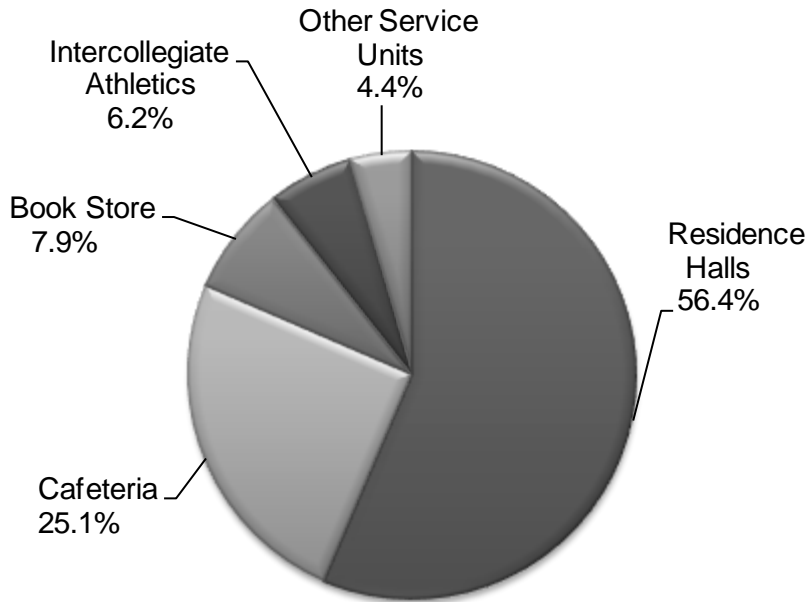
Distribution of Educational and General Expenditures by Function

<i>Expenditures by Function</i>	Fiscal Year 2008-2009	% of Total
General Academic Instruction	\$9,819,990	39.0%
Academic Support	\$2,014,263	8.0%
Student Services	\$2,013,217	8.0%
Institutional Support	\$3,629,448	14.4%
Physical Plant	\$4,323,947	17.2%
Scholarships	\$3,400,342	13.5%
Total Educational & Gen. Expenditures	\$25,201,207	100.0%

Note. Gordon College Finance and Administration.



Auxiliary Enterprises Net Revenues



Distribution of Auxiliary Enterprises Net Revenue by Source

<i>Source of Net Revenue</i>	Fiscal Year 2008-2009	% of Total
Student Housing Residence Halls	\$4,462,280	56.4%
Food Services Cafeteria	\$1,984,238	25.1%
Stores and Shops Book Store	\$625,943	7.9%
Athletics Intercollegiate Athletics	\$494,854	6.2%
Other Service Units Other	\$346,102	4.4%
Total Auxiliary Enterprise Net Revenues	\$7,913,417	100.0%

Note. Gordon College Finance and Administration.



Facilities





Facilities

Space Usage by Building

Building Number	Building Name	Gross Square Footage	Year Built	Building Use
0001	Lambdin Hall	25,471	1908	<ul style="list-style-type: none"> ▪ Office of the President ▪ Division of Academic Affairs ▪ Admissions ▪ Business Affairs ▪ Financial Aid ▪ Institutional Advancement ▪ Purchasing ▪ Registrar ▪ Student Affairs
0002	Student Center	53,436	1977	<ul style="list-style-type: none"> ▪ Auditorium ▪ Atrium area ▪ Bookstore ▪ Cafeteria ▪ Conference room ▪ Mail room ▪ Student Activities ▪ Student Counseling Center ▪ Student lounge
0003	Hightower Library	34,866	1978	<ul style="list-style-type: none"> ▪ Conference room ▪ Library
0004	Academic Building	28,545	1982	<ul style="list-style-type: none"> ▪ Division of Humanities ▪ Classrooms for business, social science, and humanities courses. ▪ Laboratories – writing lab, state-of-the-art computer science teaching lab.
0005	Plant Operations	16,253	1985	<ul style="list-style-type: none"> ▪ Central stores ▪ Maintenance storage ▪ Plant Operations offices
0006	Russell Hall	27,068	1966	<ul style="list-style-type: none"> ▪ Classrooms ▪ Division of Business & Social Science ▪ Division of Teacher Education
0007	Smith Hall	13,146	1939	<ul style="list-style-type: none"> ▪ Division of Nursing and Health Sciences ▪ Classrooms
0010	Guillebeau Hall	22,888	1935	<ul style="list-style-type: none"> ▪ Dormitory for co-ed honor students
0012	Alumni Memorial Hall	29,407	1963	<ul style="list-style-type: none"> ▪ Gymnasium ▪ Fitness center ▪ Game room
0016	Pool Complex	11,004	1995	<ul style="list-style-type: none"> ▪ Swimming pool



Building Number	Building Name	Gross Square Footage	Year Built	Building Use
0017	Melton Hall	29,641	1995	<ul style="list-style-type: none"> ▪ Dormitory
0018	Fine Arts	37,950	1994	<ul style="list-style-type: none"> ▪ Art studios ▪ Art gallery – owned by Gordon College Foundation ▪ Auditorium ▪ Classrooms ▪ Costume shop & storage ▪ Dressing rooms ▪ Musical rehearsal rooms ▪ Shop area ▪ Theater Department offices
0020	Gordon Hall	10,520	1951	<ul style="list-style-type: none"> ▪ Athletics Department ▪ Offices for Public Safety ▪ Recreation Department ▪ Nurse's office
0021	Storage P.O. A	1,852	1989	<ul style="list-style-type: none"> ▪ Storage
0022	Storage P.O. B	1,152	1990	<ul style="list-style-type: none"> ▪ Storage
0023	402 Spencer House	1,768	1946	<ul style="list-style-type: none"> ▪ Community Education ▪ Institutional Research
0024	Athletic Complex	2,886	1993	<ul style="list-style-type: none"> ▪ Concessions ▪ Offices ▪ Ticket office
0025	404 Spencer House	2,168	1945	<ul style="list-style-type: none"> ▪ Georgia Youth Science Technology Center (GYSTC) Office
0026	Georgia House	2,508	1957	<ul style="list-style-type: none"> ▪ Human Resources ▪ Payroll
0027	Instructional Complex	102,428	2000	<ul style="list-style-type: none"> ▪ Classrooms ▪ Computer and science laboratories ▪ Computer Services Department ▪ Division of Mathematics and Natural Sciences
0028	406 Spencer Street Storage	924	2004	<ul style="list-style-type: none"> ▪ Storage
0029	Gordon Commons A	55,395	2005	<ul style="list-style-type: none"> ▪ Student apartments
0030	Gordon Commons B	55,395	2005	<ul style="list-style-type: none"> ▪ Student Apartments ▪ Student Housing Department
0031	Gordon Commons C	55,395	2005	<ul style="list-style-type: none"> ▪ Student apartments
0032	406 Spencer House	2,362	1956	<ul style="list-style-type: none"> ▪ Admissions Counselors ▪ Welcome Center



Building Number	Building Name	Gross Square Footage	Year Built	Building Use
0033	Storage Pole Barn P.O. A	1,440	2000	▪ Storage
0034	Storage Facilities C	225	2000	▪ Storage
0035	Storage Facilities D	92	2001	▪ Storage
0036	Storage Baseball Field	92	2003	▪ Storage
0037	Storage Softball Field	65	2003	▪ Storage
0038	Storage Rope Course	92	2000	▪ Storage
0039	Storage Softball Field	93	2004	▪ Storage
0040	Storage Pole Barn P.O. B	1,326	2003	▪ Storage
0041	Alumni House	4,353	1938	▪ Alumni office ▪ Faculty offices
0042	Holmes St. House	1,205	1960	▪ Storage
0043	Gordon Village	132,495	2008	▪ Student Apartments
0044	Storage Student Center	814	2006	▪ Storage
0045	225 Georgia Avenue House	1,790	1939	▪ Offices
Total Gross Square Footage		768,510		

Note. Gordon College Plant Operations



Dorothy W. Hightower Library

The Dorothy W. Hightower Library is a two-story facility that was built in 1978 with 32,190 square feet of usable research/storage areas and seating space for more than 450 students and faculty. New mission style furniture was purchased during the 2001/2002 year, giving the library a more modern look

The first floor of the library presently contains the reference stacks, sizable reading and studying areas, a room for photocopying and microfilm use, bound and current periodical materials, and a computer lab. The Alumni Room houses Gordon memorabilia and the Georgia Collection, a special collection of materials relevant to the state of Georgia. Projected renovations to this floor include a computer-equipped bibliographic instruction room.

The second floor contains the circulating book collection, an audio-visual viewing room, small sound-proofed rooms for group study, and numerous carrels and tables for individual reading and study. The ADA room, also located on this floor, provides computer hardware and software for scanning and viewing text.

Mission

Hightower Library provides and maintains a full range of technology, resources, and services to support teaching and learning at Gordon College. Additionally, the library promotes awareness, understanding, and use of these resources through research skills courses, library orientation classes, individualized instruction, and reference. Gordon College students, faculty, and staff, as well as the surrounding community, are invited to use Hightower Library to pursue academic and intellectual interests.

Technology and Resources

As the learning resources center for Gordon College, the library combines traditional library services with modern educational technology. Users may browse the shelves for more than 101,383 books, including valuable reference tools, or search for specific items using GIL, the on-line catalog, which also contains over 27,474 full-text electronic books. The library subscribes to more than 3,904 print and electronic periodicals. Patrons have access in GALILEO to 18,957 online serials with over 2,000 of these full text. In addition to books and periodicals, the library houses a growing collection of audiovisual materials (from videos and audiocassettes to computer diskettes and DVDs) for use in the library or for classroom use. Equipment for viewing these materials is also available in the library.

GALILEO (Georgia's statewide library information system) connects users to full-text journal and magazine databases, electronic reference tools, other online library catalogs, and authoritative Internet resources. GALILEO articles, Internet documents, and word-processed papers may be printed on the library's laser printer.



Services

Library orientation and instruction is essential to effective library use. Therefore, instructors are encouraged to schedule an orientation session to help their students use the library's resources and services more successfully. Individual instruction and reference help, as well as research guides, are always available at the Reference Desk and the Circulation Desk.

As a member of the regional group of cooperating libraries, Hightower Library makes its collection available to other academic institutions. In return, Gordon College students have access to the resources of many other college, public, and special libraries, either through GIL Express (a resource-exchange service within the University System of Georgia) or Interlibrary Loan (a national lending system).

Students are encouraged to browse the library's collection; to check out books with their valid Gordon College I.D. and to read, research, and study while in the library. Hightower Library promotes a positive learning environment by providing an assortment of work spaces: computer stations, individual study carrels, group study rooms, and an Adaptive Technology lab. Faculty are likewise encouraged to survey the library's holdings, recommend resources for acquisition, and utilize the facility for their classes and research. Hightower Library connects the Gordon College community, both on campus and without, to the resources and services that support academic coursework, research, and lifelong learning.

Note. 2008-2009 Academic Catalog



Fine Arts Facilities

The Art, Music and Theater departments are listed under the Division of Humanities and are housed in the Fine Arts Building along with the Fine Arts Auditorium.

Art

The Art Department has specialized workspaces; ceramics studio, drawing studio, a painting studio, and a dark room for film developing, with storage for supplies and equipment.

For display of completed works there are secured display cases in halls and the stairwells of the Fine Arts Building as well as an open gallery area in the Fine Arts Building rotunda. Additionally, art displays are occasionally set up in the Hightower Library and the student cafeteria. Student and Faculty shows are held annually in the Lamar Arts Gallery in Downtown Barnesville.

Music

The Music Department offers a well-rounded curriculum for voice, piano, guitar and selected instrumental majors. Within the Fine Arts Building the Music Department has, a large choral room (seats about 70), four piano practice rooms, an Office/Choral Library, piano lab/theory room, a percussion practice room with marimba, vibraphone timpani and drum set, storage space for concert attire, piano storage, and uses the auditorium for performances. Additionally the program has a Kurzweil 88-key professional keyboard with amplifiers, and a complete portable sound system with Shure microphones.

Within the Academic computer lab, the music department has a complete Finale notation software system.

The Music Department makes use of four Kawai upright pianos, two Baldwin upright pianos, one Mason & Hamlin grand piano, two Steinway & Sons nice-foot concert grand pianos, nine Korg electronic pianos, one Computer/MIDI stations, Korg piano lab system, one 4 1/3 octave Adams concert Marimba, one Musser Pro vibraphone, four Adams concert Timpani, a full complement of percussion accessories, one vintage Rogers drum kit, one pair of professional conga drums, stereo system with Onkyo, Technics and Harman/Karden components, and a Wenger stereo cabinet. There is also an organ practice room containing an Allen Digital Computer organ, which has three manuals and full pedalboard.

The Music Library contains Wenger music storage equipment, Gamble storage boxes, and 1000 choral, band, jazz band and chamber ensemble title.

Theater

The Theater Department holds its performances in a state-of-the-art full proscenium theater, with reserve seating for 483. The theater is handicap accessible and equipped with the *SoundMate* Hearing System to assist the hearing impaired. The costume shop is equipped with four deluxe



sewing machines, two sergers, 12 dress forms (male and female), and a washer and dryer, and has a large separate costume storage room. The dressing rooms (male and female) are equipped with showers, 34 separate make-up stations (20 in the women's area and 14 in the men's area) with mirrors, electrical connections, and vanity lighting at each station. A ticket box office is available for advance ticket reservations and sales.

The scene shop, adjacent to the stage, is fitted with a table saw, band saw, panel saw, compound miter saw, air compressor and complete line of pneumatic tools, cordless drills, and a bench grinder. Also in the shop is secured tool storage complete with a full line of hand tools and accessories. The loading dock is easily accessed from the shop.

The stage area is approximately 1,320 sq. ft., with 280 sq. ft. of wing space, complete with flies, drops, and an orchestra pit, which can be covered when not in use, increasing the stage area. In 2006, a soft Marley dance floor that can be laid to a maximum coverage of 50' x 27' or 1,350 sq. ft. was added.

The theater's newly upgraded sound system is composed of a Mackie 32-8 mixing console, QSC power amplifiers, six EV house speakers, two Mackie house subwoofers, ten Sennheiser wireless mics, ten Shure wireless mics, Aphex compression units, Telex headset system, and Audio-Technica, Sennheiser, and Telex microphones. The lighting system includes an ETC Idea 48 lighting console, 96 ETC dimmers, Altman, Colortran, and ETC instruments. The department also owns two High End Studio Spot 250 intelligent lighting instruments.

Note. Gordon College Division of Humanities.



Athletic and Recreational Facilities

Gordon College has a wide range of athletic and recreational facilities open to students, faculty and staff. The Alumni Memorial Hall (gymnasium) underwent a restoration project in 2002 and is now a multidimensional athletics facility. The Alumni Memorial Hall has a 1,000 seating capacity, a basketball court, pool hall, fitness room, weight room, locker rooms and showers. The pool hall contains three pool tables, two ping-pong tables, and an arcade/game room. The fitness room contains seven Cybex stationary bikes, six Cybex treadmills, six Cybex steppers, and full body workout machines. The weight room is equipped with benches, free weights, and dumbbells.

The Athletic Complex contains a lighted soccer field (120x80 yds) with two permanent goals, and an intramural soccer field (120x80 yds) with four moveable goals. Also located in the complex are a lighted softball field, lighted baseball field, six lighted tennis courts*, four open air (three walls) racquetball courts, sand volleyball court, the Highlander Trail with three trails of varying lengths; .67 miles, .88 miles, and 1.27 miles. Athletic offices, concessions and ticket office are contained within the main complex building.

Completed in March 2002 is the Sherman Day Teambuilding Ropes Course. This course offers both low and high elements. As part of the low elements are seven separate elements. There are six separate high elements. Each element is designed to improve team efficiency and confidence.

The Aquatic Center contains an enclosed 25 meter pool with six lanes. The pool may be used for various activities by using any of the following; volleyball net, basketball goal, or two water polo goals. There are locker rooms and showers located within the facility.