

2022-2023

# GRADUATION QUICK FACTS

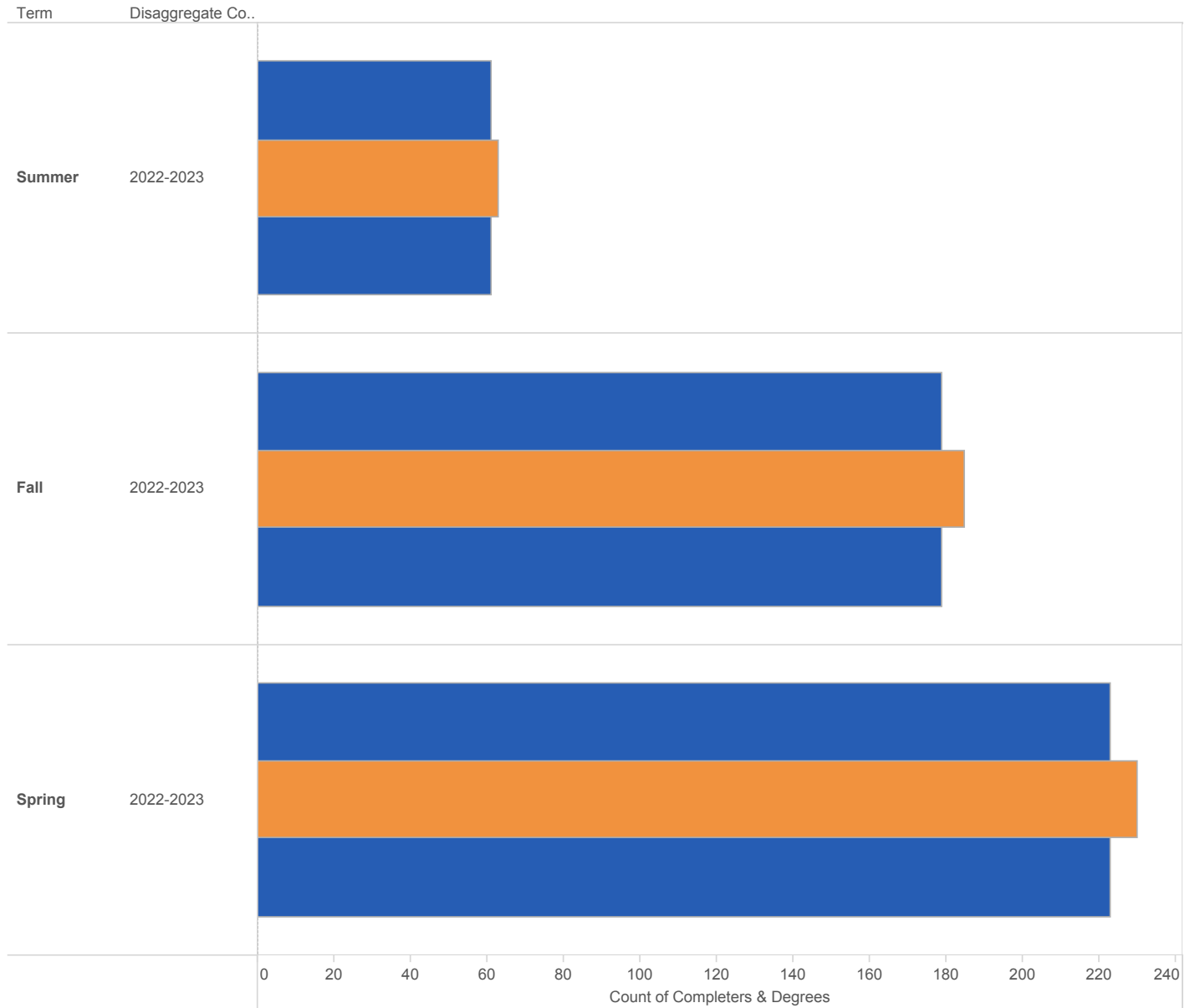


GORDON  
STATE COLLEGE

# Completers and Degrees

Acad Year  
2022-2023

disaggregate  
Degree Academic Year



■ Completers  
■ Degrees  
*Completers - Wide, outer blue bar*  
*Degrees - Narrow, inner yellow bar*

Term	2022-2023			Grand Total		
	Completers	Associate Degrees	Baccalaureate Degrees	Completers	Associate Degrees	Baccalaureate Degrees
Summer	61	46	17	61	46	17
Fall	179	122	63	179	122	63
Spring	223	83	147	223	83	147

**Note:** Completer counts are unduplicated over the term and total. A student earning degrees in multiple semesters will cause the Total to be less than sum of semesters.

**NOTE:** A term noted by \* indicates preliminary, non-official data that has not yet been reported to USG BOR.

## Degrees Awarded Academic Year 2022-2023

Degree Level	Degree	Major/Baccalaureate Pathway	Term			Grand Total
			Summer	Fall	Spring	
Associate	Assoc. of Science in Nursing	Nursing (ASN)		38		38
		Nursing (LPN to RN Bridge)		3		3
		<b>Total</b>		41		41
	Associate of Arts	Mass Communication Major		4		4
		Psychology Major	6	19	9	34
		Sociology Major		2		2
		Theater Major		2	3	5
		Visual Arts Major	1	4	2	7
		<b>Total</b>	7	31	14	52
	Associate of Arts Core Curric	Core Curriculum		2	9	11
		English Pathway		1	1	2
		Middle Grades Ed Pathway		1		1
		Political Science Pathway		1	2	3
		Psychology Pathway	2			2
		Teacher Education Pathway	4	7	6	17
		<b>Total</b>	6	12	18	36
	Associate of Science	Business Administration Major	6	18	20	44
		Chemistry Major	1	1		2
		Computer Science Major	2	1	3	6
		Criminal Justice Major	1	2	7	10
		Engineering Major	5	3	2	10
		Information Technology Major	1	4	7	12
		<b>Total</b>	16	29	39	84
	Associate of Science Core Curr	Biological Sciences Pathway		1	3	4
		Business Administration Pathway	1		1	2
		Health Info Management Pathway	2	1		3
		Health/Physical Educ Pathway	2		1	3
		Human Services Pathway	1	2	2	5
		Mathematics Pathway	1		1	2
		Nursing Transfer Pathway	10	4	4	18
		Pharmacy Transfer Pathway		1		1
	<b>Total</b>	17	9	12	38	
	<b>Total</b>		46	122	83	251
Baccalaureate	Bachelor of Arts	English			1	1
		English - Creative Writing		1		1
		English - Liberal Arts			3	3
		English/Teaching Certification	1			1
		History		2	1	3
		History/Teaching Certification	1	1	1	3
		Intdisp Stud Comm & Organizat	1	1		2
		Intdisp Studies Liberal Arts	2	1	1	4
		Intdisp Studies Managment		1		1
	<b>Total</b>	5	7	7	19	
	Bachelor of Science	Biology	3	14	12	29
		Biology/Teaching Certification			2	2
		Health and Wellness			3	3
		Health Info Management			5	5

**NOTE:** A term noted by \* indicates preliminary, non-official data that has not yet been reported to USG BOR.

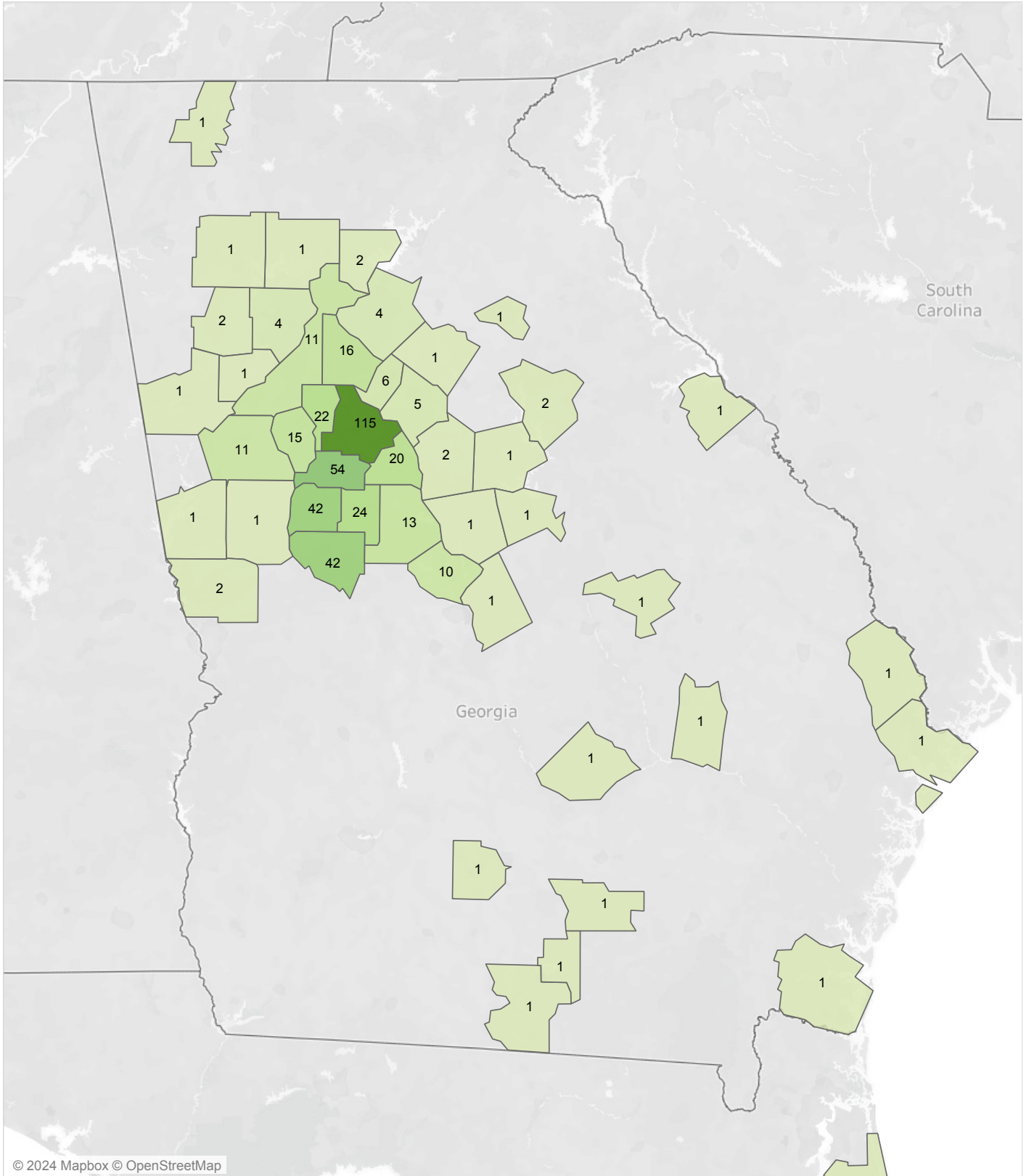
## Degrees Awarded Academic Year 2022-2023

Degree Level	Degree	Major/Baccalaureate Pathway	Term			Grand Total
			Summer	Fall	Spring	
Baccalaureate	Bachelor of Science	Human Services	3	16	11	30
		Management and Administration	6	14	23	43
		Mathematics		1		1
		<b>Total</b>	12	45	56	113
	Bachelor of Science in Educ	Elementary Ed/Special Ed		1	34	35
		<b>Total</b>		1	34	35
	Bachelor of Science in Nursing	Nursing - BSN			46	46
		<b>Total</b>			46	46
	RN to BSN Completion Degree	Nursing (RN-BSN Completion)		10	4	14
		<b>Total</b>		10	4	14
	<b>Total</b>		17	63	147	227
<b>Grand Total</b>			63	185	230	478

**NOTE:** A term noted by \* indicates preliminary, non-official data that has not yet been reported to USG BOR.

# Completers by County of Origin

Academic Year 2022-2023



© 2024 Mapbox © OpenStreetMap

Distinct count of Shrdgmr Pidm  
1 115