



GORDON
STATE COLLEGE



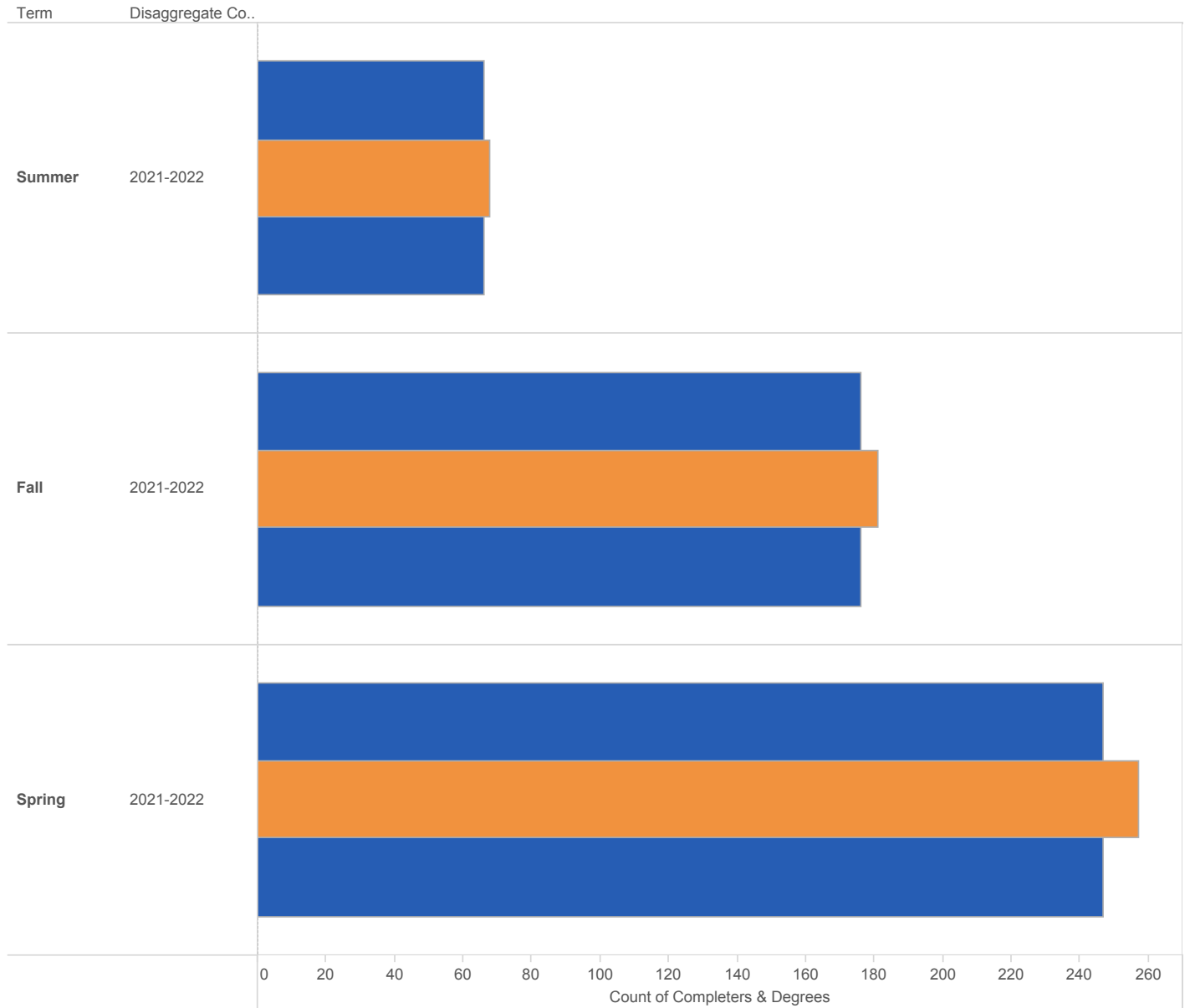
GRADUATION QUICK FACTS

2021 - 2022

Completers and Degrees

Acad Year
2021-2022

disaggregate
Degree Academic Year



■ Completers
■ Degrees
 Completers - Wide, outer blue bar
 Degrees - Narrow, inner yellow bar

| Term | 2021-2022 | | | Grand Total | | |
|--------|------------|-------------------|-----------------------|-------------|-------------------|-----------------------|
| | Completers | Associate Degrees | Baccalaureate Degrees | Completers | Associate Degrees | Baccalaureate Degrees |
| Summer | 66 | 46 | 22 | 66 | 46 | 22 |
| Fall | 176 | 125 | 56 | 176 | 125 | 56 |
| Spring | 247 | 101 | 156 | 247 | 101 | 156 |

Note: Completer counts are unduplicated over the term and total. A student earning degrees in multiple semesters will cause the Total to be less than sum of semesters.

NOTE: A term noted by * indicates preliminary, non-official data that has not yet been reported to USG BOR.

Degrees Awarded Academic Year 2021-2022

| Degree Level | Degree | Major/Baccalaureate Pathway | Term | | | Grand Total |
|---------------------------|--------------------------------|---------------------------------|--------|------|--------|-------------|
| | | | Summer | Fall | Spring | |
| Associate | Assoc. of Science in Nursing | Nursing (ASN) | | 36 | | 36 |
| | | Nursing (LPN to RN Bridge) | | 4 | | 4 |
| | | Total | | 40 | | 40 |
| | Associate of Arts | Foreign Language Major | | | 1 | 1 |
| | | Mass Communication Major | 2 | 4 | 2 | 8 |
| | | Psychology Major | 13 | 7 | 14 | 34 |
| | | Sociology Major | 1 | 2 | 2 | 5 |
| | | Theater Major | | | 3 | 3 |
| | | Visual Arts Major | 1 | 2 | 4 | 7 |
| | | Total | 17 | 15 | 26 | 58 |
| | Associate of Arts Core Curric | Core Curriculum | 1 | 6 | 7 | 14 |
| | | Middle Grades Ed Pathway | | 1 | | 1 |
| | | Political Science Pathway | | 2 | | 2 |
| | | Teacher Education Pathway | 11 | 5 | 6 | 22 |
| | | Total | 12 | 14 | 13 | 39 |
| | Associate of Science | Business Administration Major | 2 | 27 | 29 | 58 |
| | | Chemistry Major | 1 | 3 | 1 | 5 |
| | | Computer Science Major | | | 1 | 1 |
| | | Criminal Justice Major | 2 | 8 | 5 | 15 |
| | | Engineering Major | | | 1 | 1 |
| | | Information Technology Major | | 4 | 6 | 10 |
| | | Total | 5 | 42 | 43 | 90 |
| | Associate of Science Core Curr | Biological Sciences Pathway | 5 | 5 | 6 | 16 |
| | | Business Administration Pathway | | | 1 | 1 |
| | | Computer Science Pathway | | 1 | | 1 |
| | | Health Info Management Pathway | 2 | 1 | 2 | 5 |
| | | Health/Physical Educ Pathway | | 1 | 1 | 2 |
| Human Services Pathway | | 1 | 3 | 1 | 5 | |
| Nursing Transfer Pathway | | 3 | 3 | 8 | 14 | |
| Pharmacy Transfer Pathway | | 1 | | | 1 | |
| Total | | 12 | 14 | 19 | 45 | |
| Total | | 46 | 125 | 101 | 272 | |
| Baccalaureate | Bachelor of Arts | English | | | 2 | 2 |
| | | English - Creative Writing | | 2 | 1 | 3 |
| | | English - Professional Commun | | 2 | | 2 |
| | | History | 1 | 2 | 3 | 6 |
| | | History/Teaching Certification | | 1 | 1 | 2 |
| | | Intdisp Studies Liberal Arts | 2 | 1 | 3 | 6 |
| | | Total | 3 | 8 | 10 | 21 |
| | Bachelor of Science | Biology | 3 | 13 | 13 | 29 |
| | | Health Info Management | | | 8 | 8 |
| | | Human Services | 8 | 9 | 24 | 41 |
| | | Management and Administration | 8 | 17 | 20 | 45 |
| | | Mathematics | | | 2 | 2 |
| | | Middle Grades Ed Science | | | 1 | 1 |
| | | Total | 19 | 39 | 68 | 126 |
| | Bachelor of Science in Educ | Elementary Ed/Special Ed | | | 44 | 44 |

NOTE: A term noted by * indicates preliminary, non-official data that has not yet been reported to USG BOR.

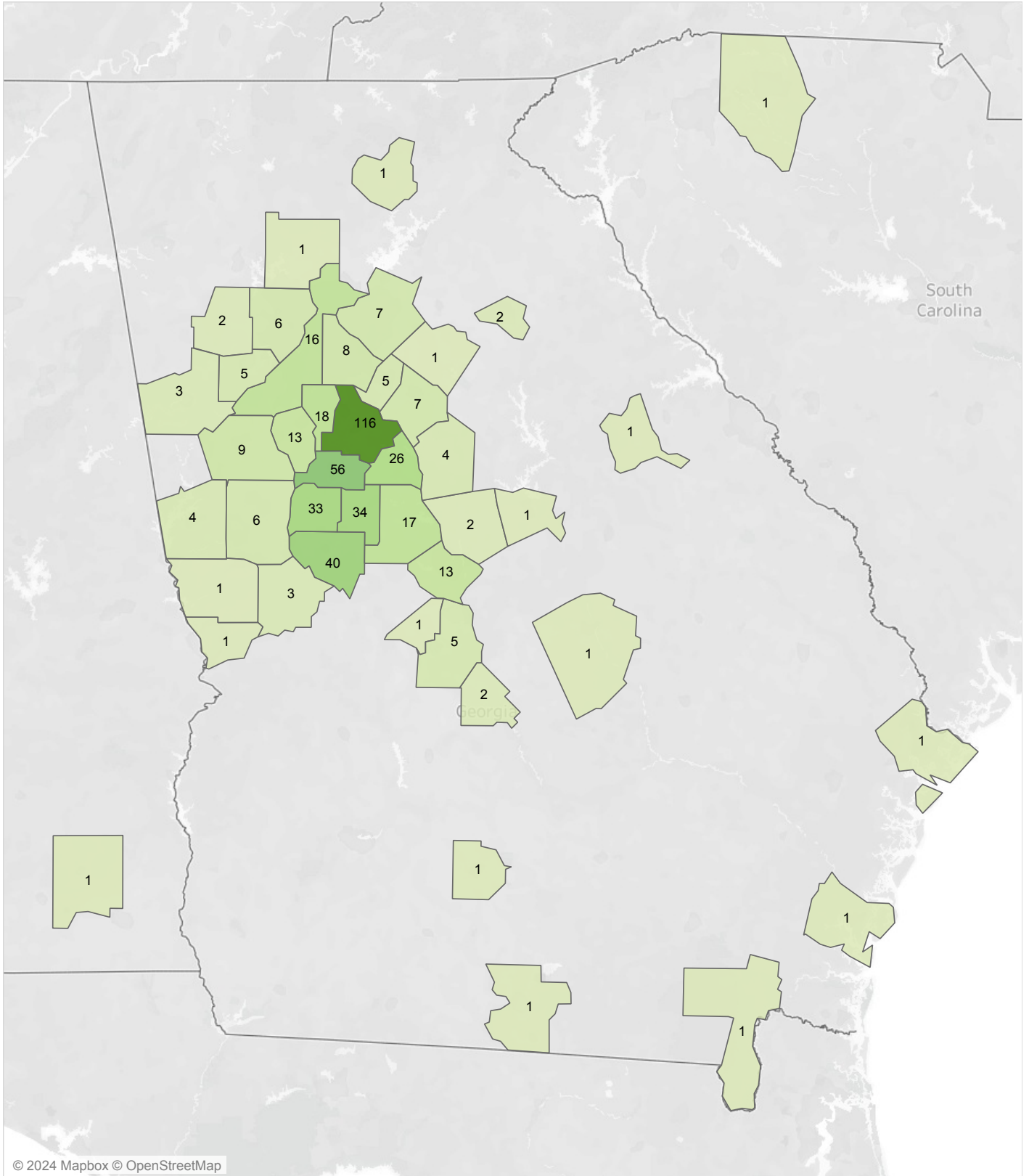
Degrees Awarded
Academic Year 2021-2022

| Degree Level | Degree | Major/Baccalaureate Pathway | Term | | | Grand Total |
|--------------------|--------------------------------|-----------------------------|--------|------|--------|-------------|
| | | | Summer | Fall | Spring | |
| Baccalaureate | Bachelor of Science in Educ | Total | | | 44 | 44 |
| | Bachelor of Science in Nursing | Nursing - BSN | | | 33 | 33 |
| | | Total | | | 33 | 33 |
| | RN to BSN Completion Degree | Nursing (RN-BSN Completion) | | 9 | 1 | 10 |
| | | Total | | 9 | 1 | 10 |
| | Total | | | 22 | 56 | 156 |
| Grand Total | | | 68 | 181 | 257 | 506 |

NOTE: A term noted by * indicates preliminary, non-official data that has not yet been reported to USG BOR.

Completers by County of Origin

Academic Year 2021-2022



© 2024 Mapbox © OpenStreetMap

Distinct count of Shrdgmr Pidm
1 116